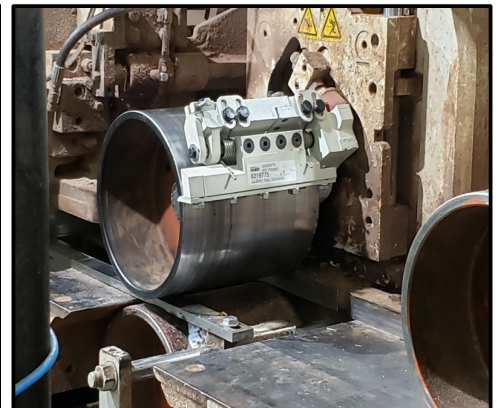
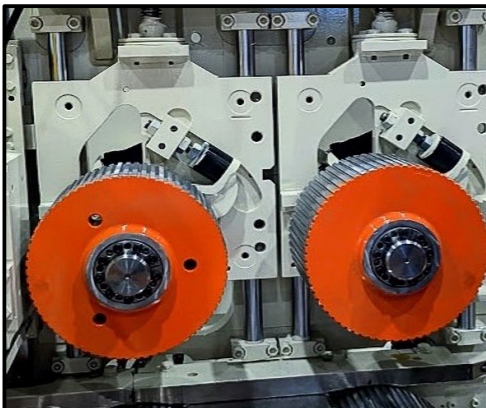


# UPGRADE PARTS FOR YOUR S-SERIES PLANER

**GILBERT**



# S-SERIES PLANER UPGRADES

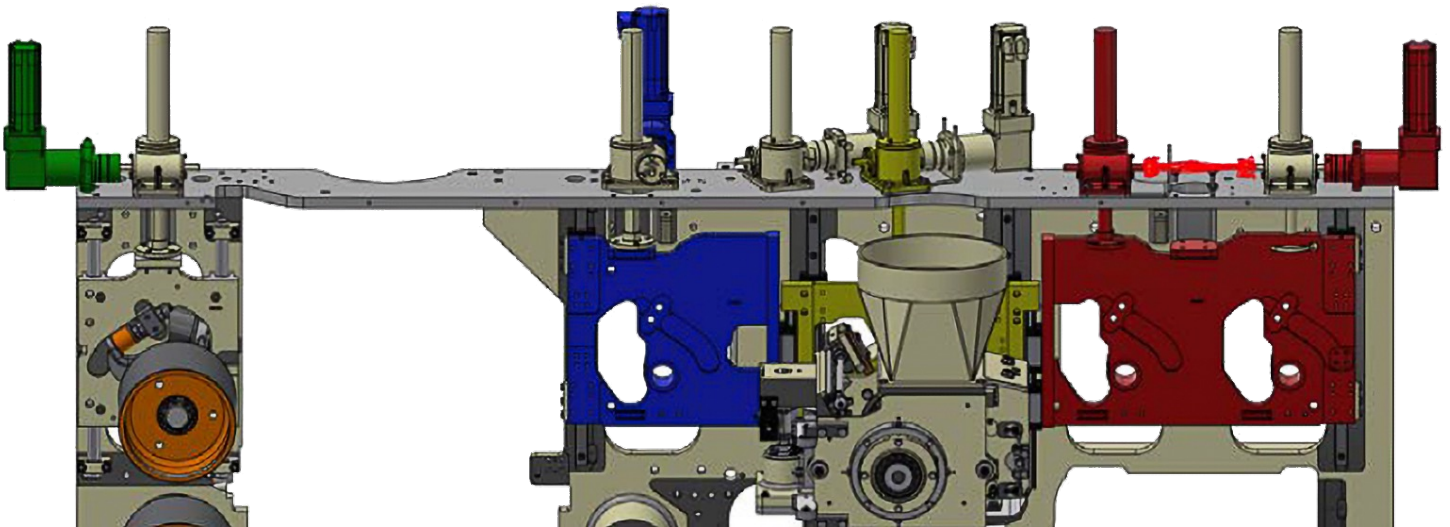
---

Take advantage of Gilbert's state-of-the-art technology to upgrade your planer. Gilbert planer parts can be installed to increase planer productivity and efficiency.

- Independent Module for Top Rolls **(P. 3)**
- Automatic Options **(P.4)**
- Top Roll Shock Absorber **(P. 5)**
- Scraper on Outfeed Rolls **(P.6)**
- Retractable arm for Feed Table **(P.7)**
- Rolls **(P.8)**
- Cutterheads **(P. 9-10)**
- Side Head Jointer in Grinding Room **(P.11)**
- Temperature monitoring system **(P. 12)**
- Profile / Splitting Module **(P.13)**



# INDEPENDENT MODULE FOR TOP ROLLS

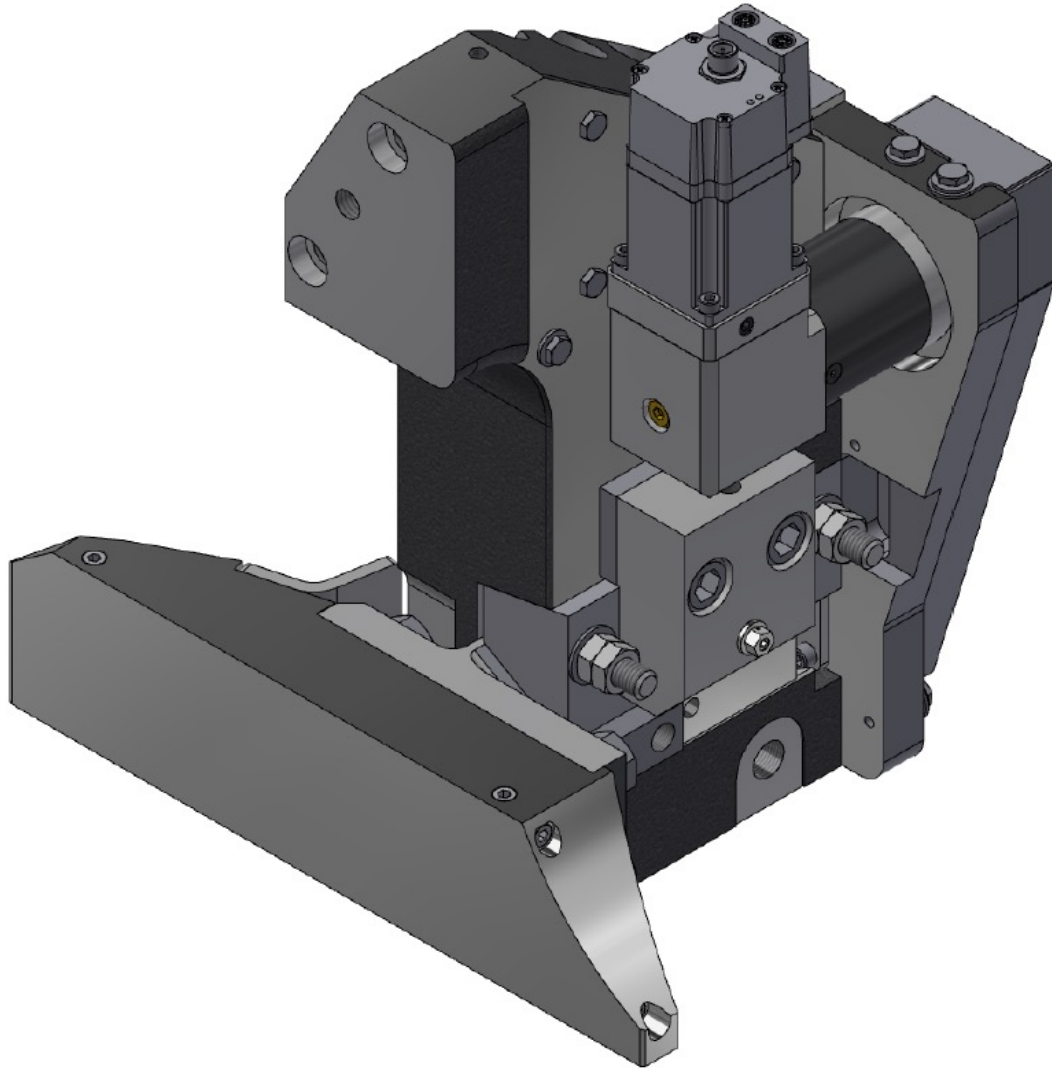


- Have separate adjustments for all top rolls on planer, feed table and bridge
- Infeed and outfeed can be completely separated another servomotor can be installed, one on the infeed one on the outfeed;
- Infeed rolls can be adjusted for rough lumber;
- Outfeed rolls can be adjusted lower for plane lumber.

# AUTOMATIC OPTIONS

---

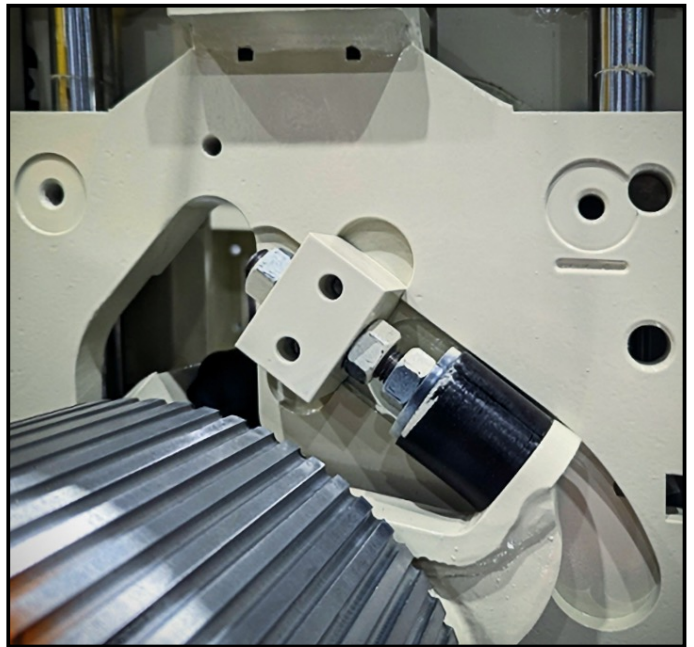
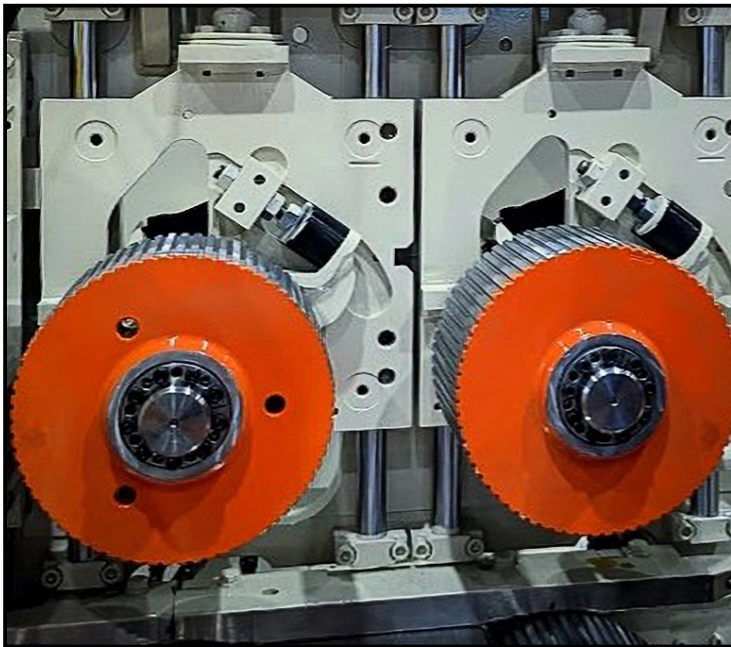
## After-Cut Shoe



- Same automatic function as the pressure plate after the top head.
- Servo motor installed, and remote control
- Right option to have if the automatic side head jointers are used.
- Joint the side heads outside the planer room. Then, adjust the after-cut shoe according to the new cutting circle, outside the planer room

# TOP ROLL SHOCK ABSORBER

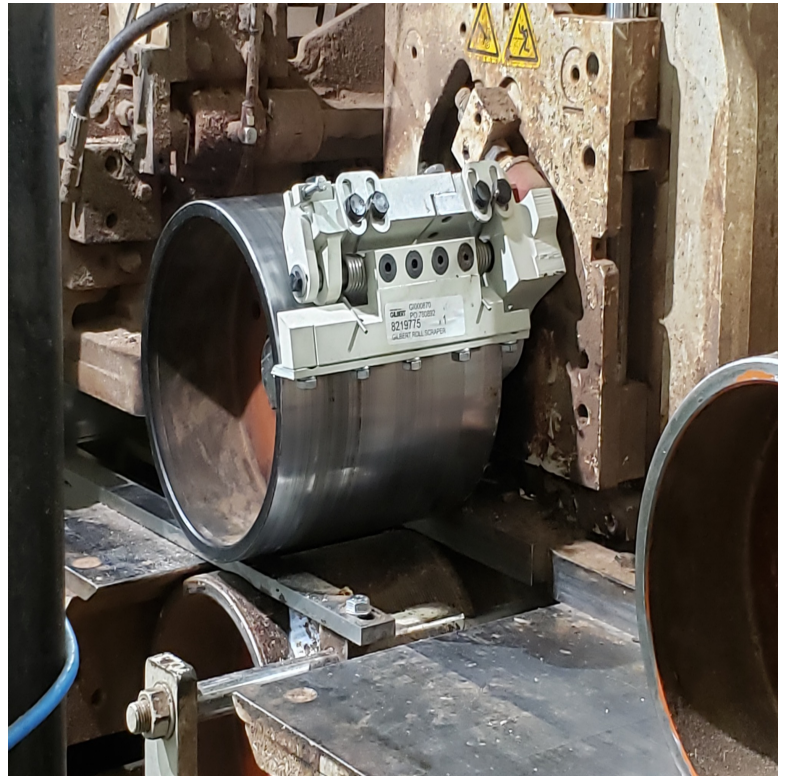
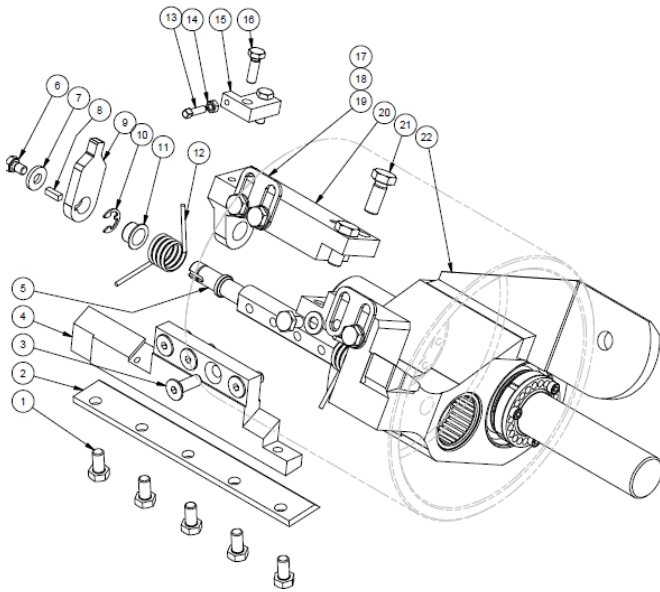
---



- Design completely revised;
- Much better compression;
- Made of polyurethane
- Duro 90



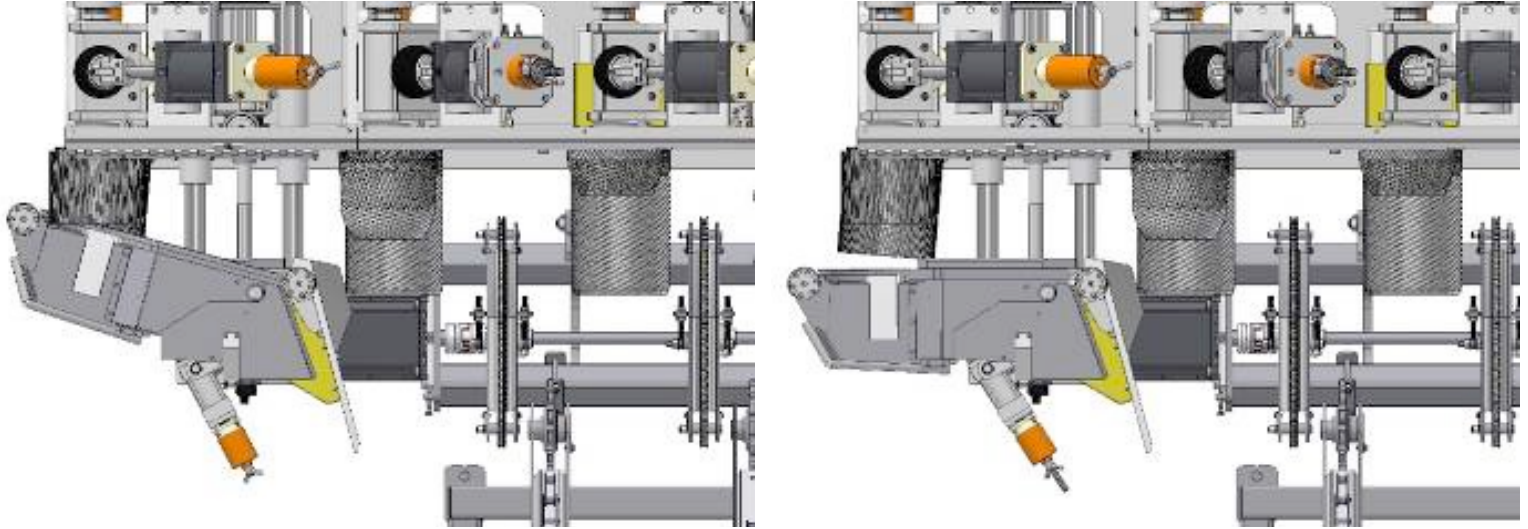
# SCRAPER ON OUTFEED ROLLS



- Remove pitch off the planer outfeed rolls

# RETRACTABLE ARM FOR FEED TABLE

---



*Note: Picture may be different from description*

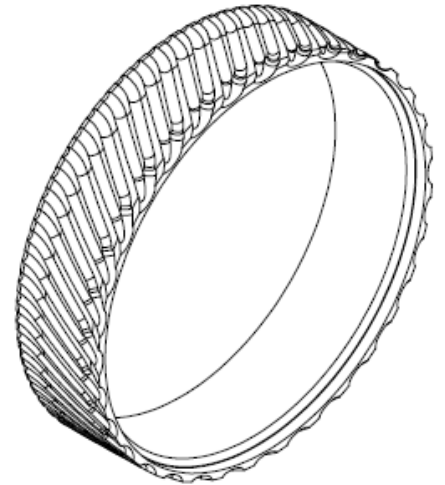
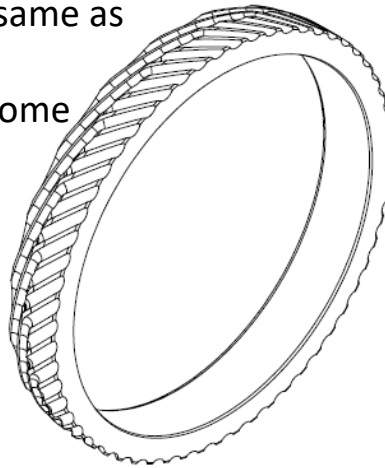
- Less jams in the planer
- Will open up for different widths
- Keep boards against the guide bar
- Can open up when boards are wider than the required product (ex: 2x8, 8.25 product coming

# PINEAPPLES + ROLLS

## Aggressive Bed Rolls, Pineapple Rolls and Infeed Rolls



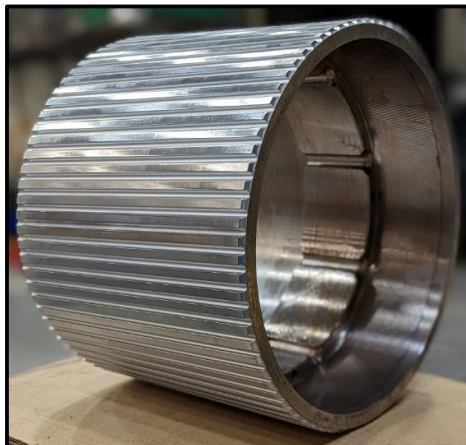
- Replaceable crowns available, same as Pineapples;
- Tungsten finish rather than chrome



**Knurled Finish**

**Grooved Finish**

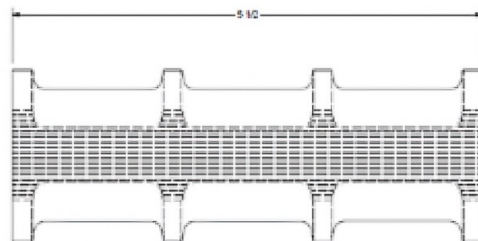
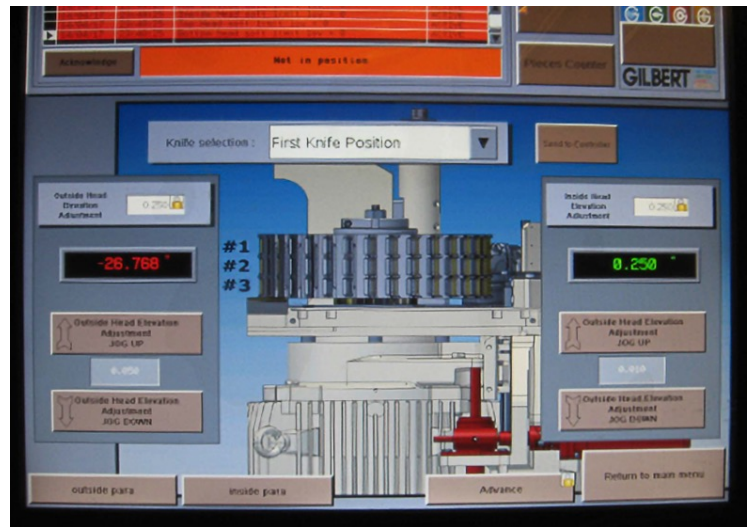
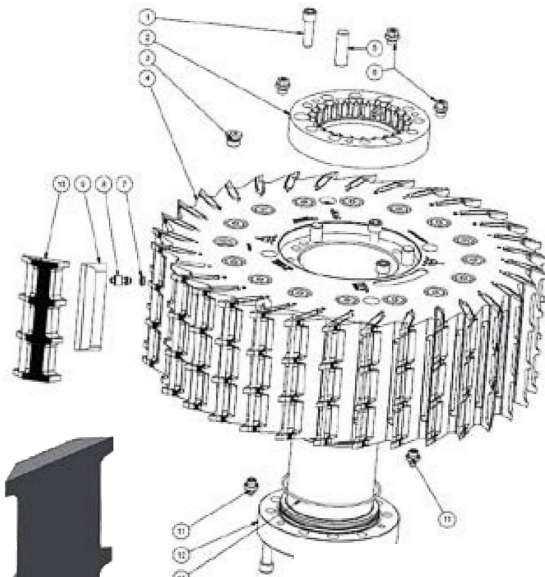
**Sandblasted Finish**



- Improves traction on infeed
- Increased uptime and productivity



# HYDRO-GRIP TRIPLE PATTERN SIDE HEADS

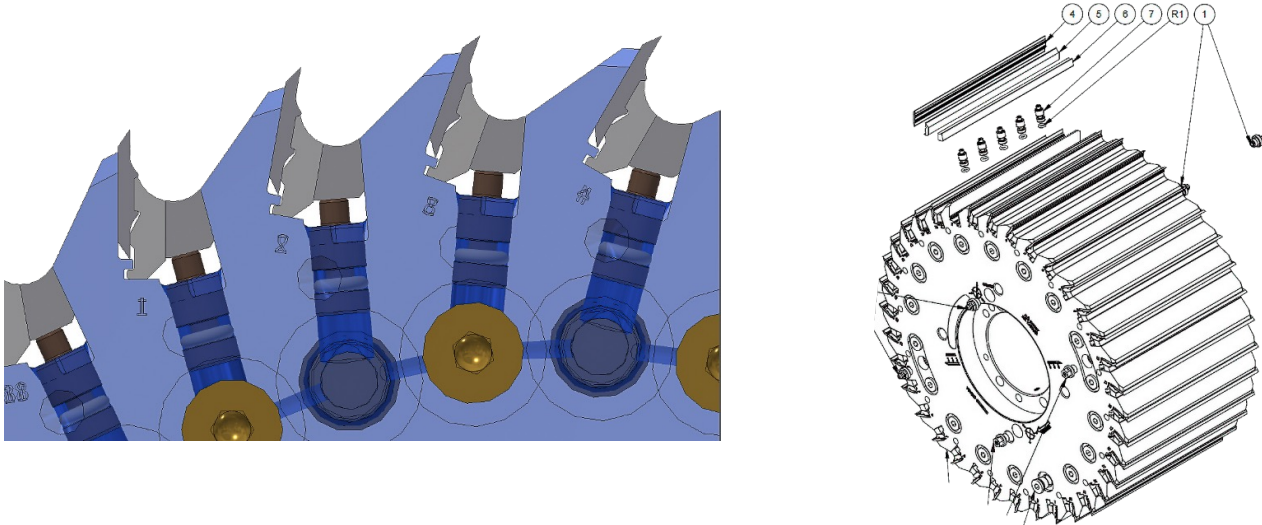


- 6 inch side head knives;
- The knives can have 3 or more patterns;
- Heads stay in the planer 3 times longer;
- Joint knives once all three patterns are worn;
- Knives are reversible & grindable.

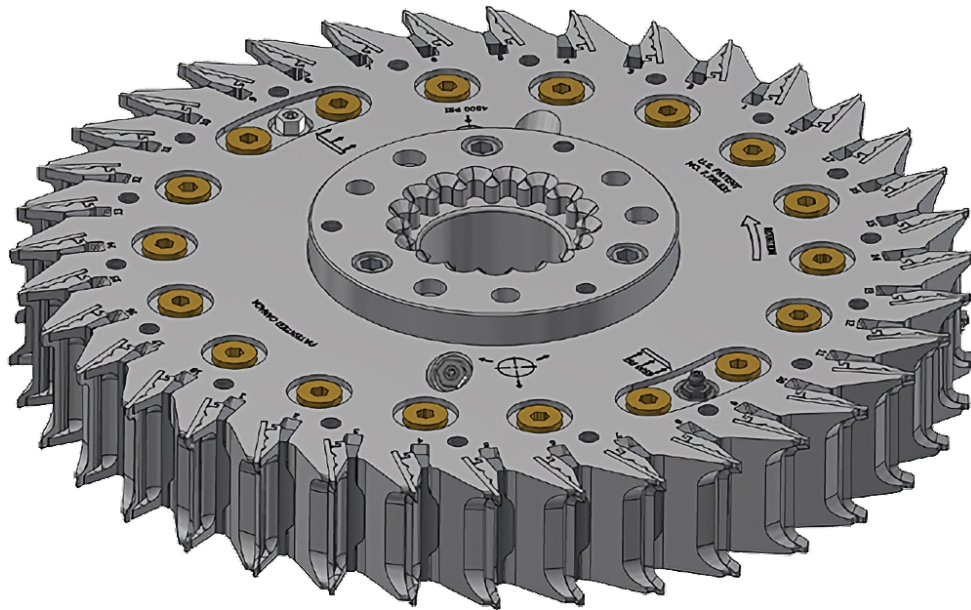
\*\*Must have side head linear rails already installed

# KEY KNIFE CUTTERHEADS

## Hydro-Grip Top and Bottom Heads with Key Knives



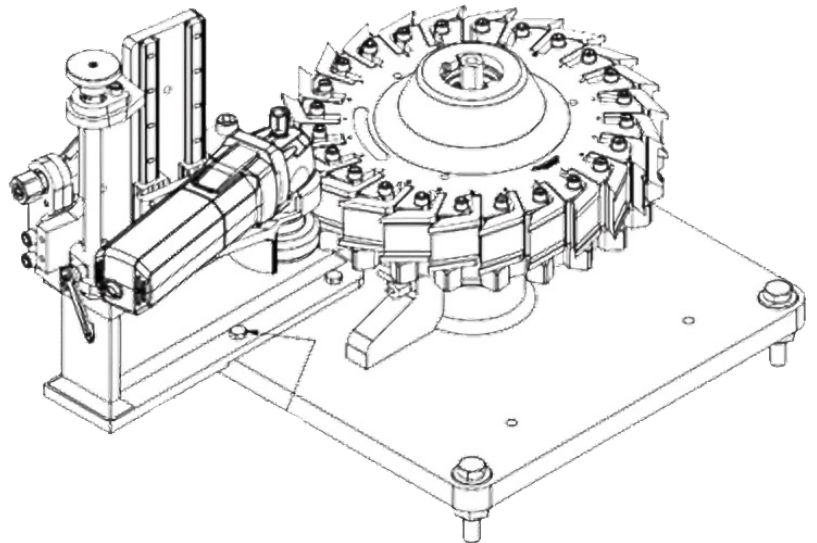
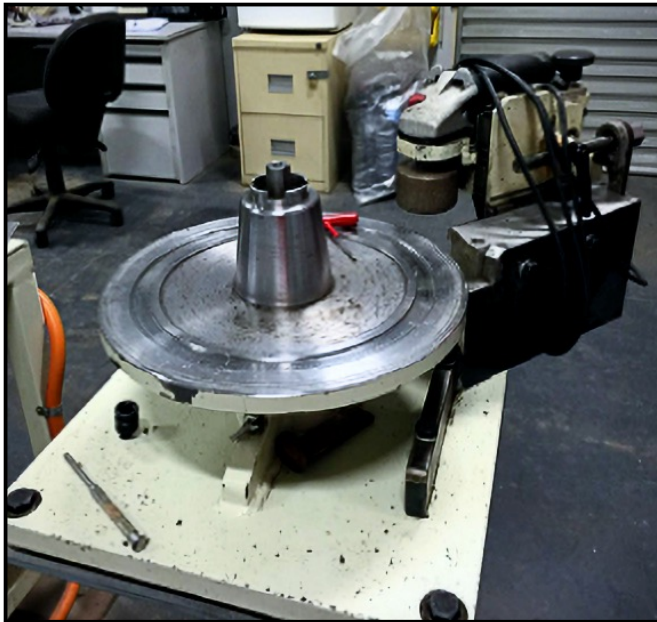
## Hydro-Grip Side Heads with Key Knives



- Safer
- All knives are mounted with a hydro-grip system;
- Time saved because there are no bolts to install;
- Long lasting on planer without changing;
- No grinder required.



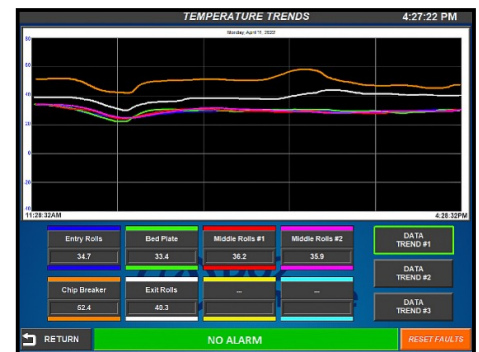
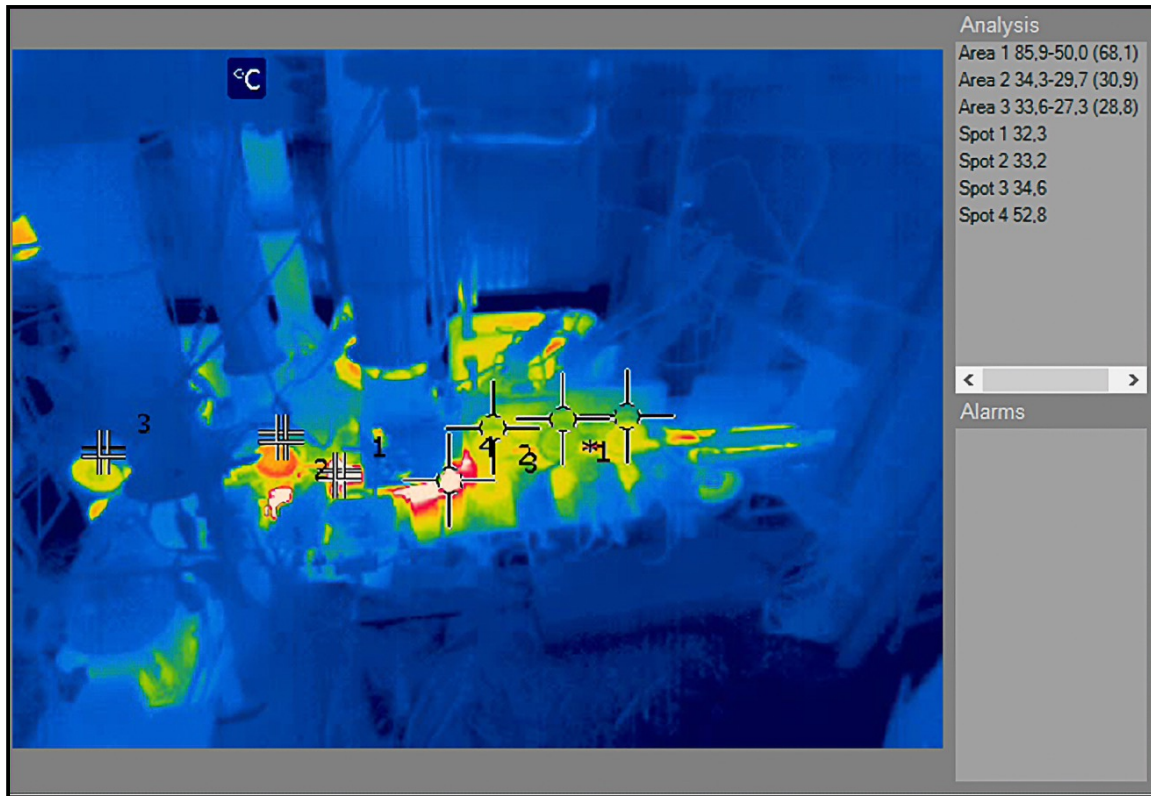
## SIDE HEAD JOINTER IN GRINDING ROOM



Instead of jointing directly on the planer, it is possible to install the jig in the grinding room. Joint the knives in the grinding room and install the heads in the planer afterwards.

- Very precise set up;
- Keep perfect radius all the time;
- Reduced grinding time;
- Noticeably increased knife lifetime;
- Increase the quality of the finished wood;
- Very rapid payback on knives.

# GILBERT PLANNER TEMPERATURE MONITORING SYSTEM TO PREVENT FIRES OR OVERHEATING

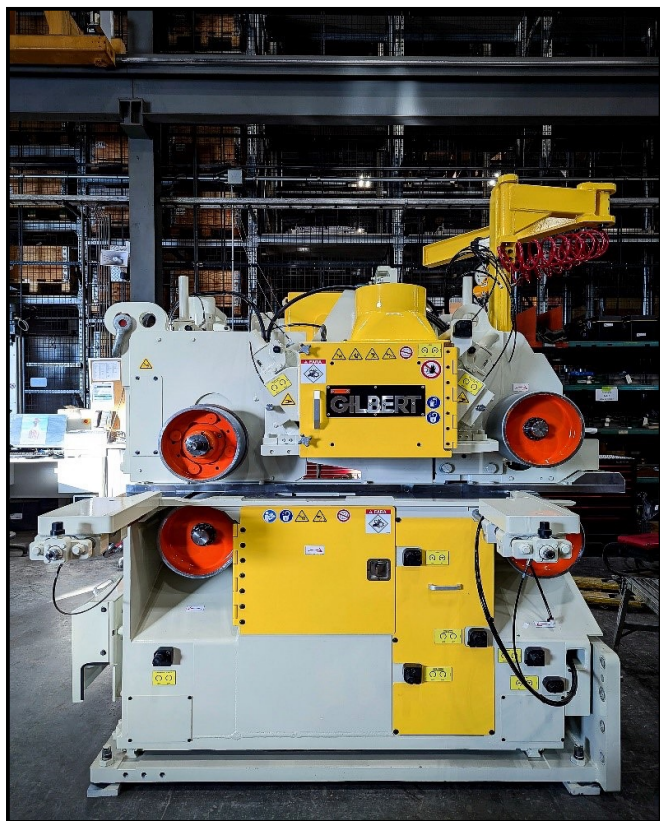


- Thermal imaging cameras (FLIR) to monitor hotspots;
- Prevents overheating and premature wear;
- Includes a 15" touchscreen, mini-computer, thermal cameras & audiovisual alert;
- Programmable for a specific spot or a zone e.g : guide bar or bed plate
- Can be entirely stand-alone or connected to the mill PLC;
- Provides temperature graphs (°C or °F) in real-time readings and keeps a 24h history;
- Fire hazard is now much more controlled.



# PROFILE / SPLITTING MODULE

## CAN BE RETROFITTED TO EXISTING PLANERS



*Time to split, time to profit*

- The module can be attached to a planer or on an independent production line.
- Module to make special profiles or to split lumber in two or three pieces;
- Feed speeds up to 1800 ft/min (550 m/min);
- It operates with the same Hydro-Grip system as used on Gilbert planers;
- Any type of splitting or profiling tools can be installed;
- Can be retro fitted to existing planers.

# WEAR PARTS

---

Did you know you could send all your Gilbert Planer wear parts to our USA factory for our special extra tough, long-lasting recoating?

Bedplates, Guide Bars, Chip Breakers and more!

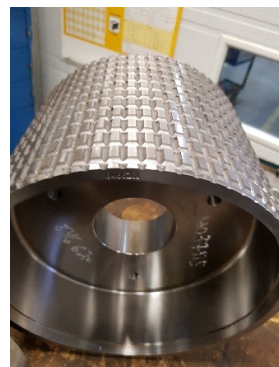
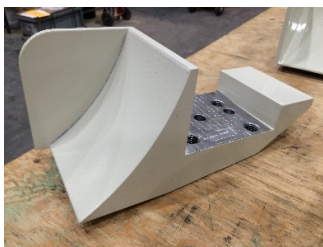
Make sure you have a spare on the shelf of each part to install on your machine, while sending the worn one to our factory.

Please contact Gilbert to order new spares [parts@gilbert-tech.com](mailto:parts@gilbert-tech.com) or 1-418-275-5041 #2283. There are new part numbers for each wear plate with this new coating. These new parts numbers, are not always the original numbers in your Parts Manual!

Our USA factory – rapid, efficient, and NO custom paperwork for you!

## GILBERT USA FACTORY INCLUDES :

A robotic cell system to make ALL wear parts. It uses the longest lasting coating on the market. It is used to put wear coating on planer parts such as bedplates, guide bars, chipbreakers. We are also looking for new coating and spare part opportunities! Not only for planer parts, **but for all your sawmill equipment. Contact us for questions!**





# UPGRADE PARTS FOR YOUR GILBERT PLANNER

---

FOR MORE INFORMATION, FEEL FREE TO CONTACT US.

Heidi Danbrook

Sales Manager

Office: 418.275.5041 #2231

Mobile: 418.630.4979

[Heidi.Danbrook@gilbert-tech.com](mailto:Heidi.Danbrook@gilbert-tech.com)

Sylvain Lefebvre

Sr. Sales Engineer

Office: 418.275.5041 #2223

Mobile: 418.671.3132

[Sylvain.Lefebvre@gilbert-tech.com](mailto:Sylvain.Lefebvre@gilbert-tech.com)

Jimmy Porter

Service and Parts Representative

Southeastern USA

Mobile: 850.830.1640

[Jimmy.Porter@gilbert-tech.com](mailto:Jimmy.Porter@gilbert-tech.com)

Larry Rabidue

Service and Parts Representative

Western Canada & USA

Mobile: 208.597.1683

[Larry.Rabidue@gilbert-tech.com](mailto:Larry.Rabidue@gilbert-tech.com)

Philippe Pelletier

Sales Coordinator

Office: 418.275.5041 #2341

[Philippe.Pelletier@gilbert-tech.com](mailto:Philippe.Pelletier@gilbert-tech.com)