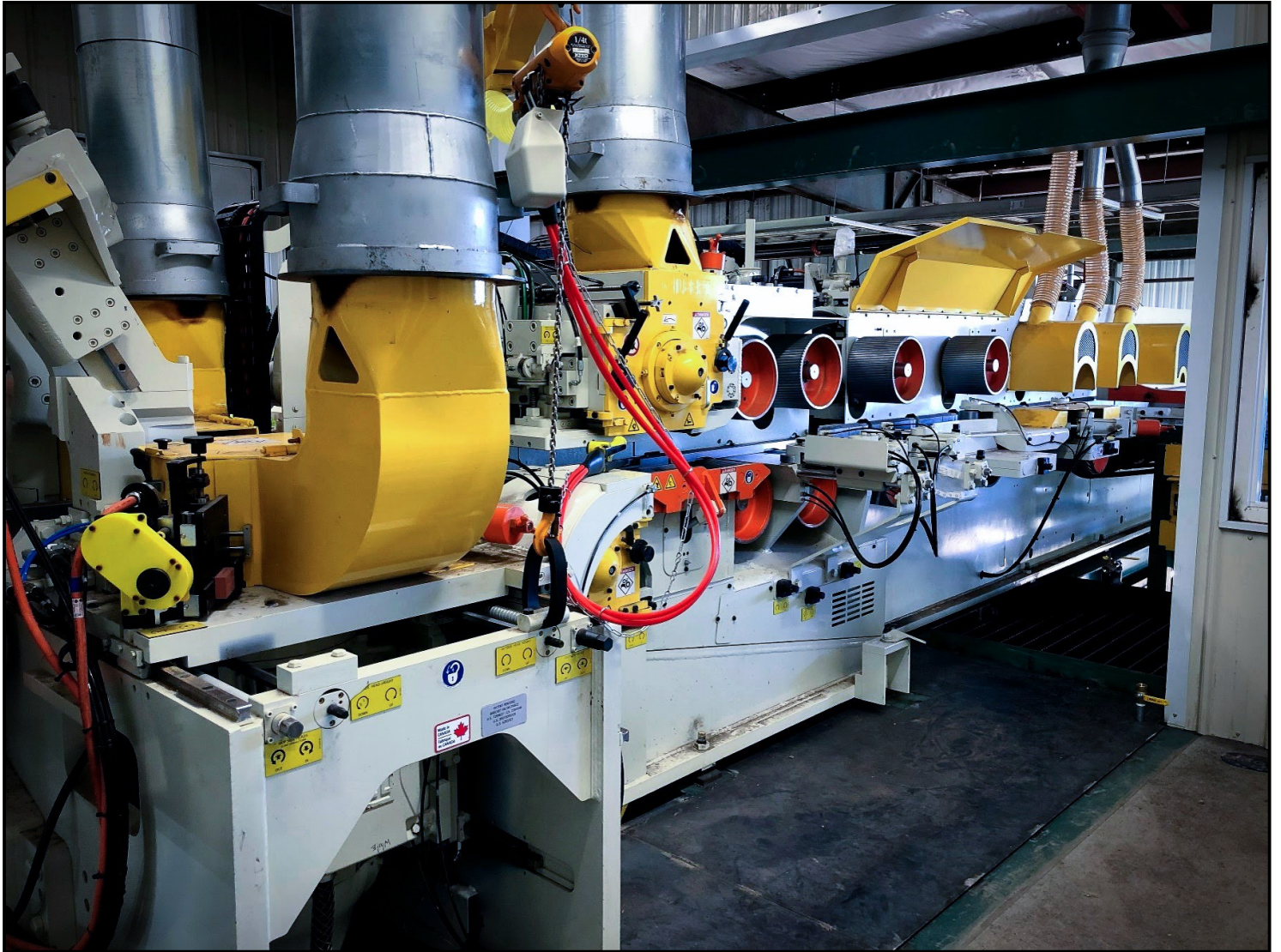


UPGRADE PARTS FOR YOUR GILBERT PLANER

GILBERT



UPGRADE PARTS FOR YOUR GILBERT PLANER

Take advantage of Gilbert's state-of-the-art technology to upgrade your planer. Gilbert planer parts can be installed to increase planer productivity and efficiency.

Safety, Efficiency and Automation Upgrades

- Heavy Duty Top Roll System with Remote-Controlled Height Adjustment (P. 3)
- Gilbert GRIP System To Replace Air Cylinders(P. 4)
- New Balancer (P. 5)
- Automatic Cutterhead Positioning System (P. 6-7)
- Vibration And Temperature Monitoring System (P. 8)
- Temperature monitoring system (P. 9)
- Remote-Controlled Top Head Pressure Plate (P. 10)
- Safety Remote Top and Bottom Head Jointers (P. 11)
- Upgrade for Top and Bottom Head Jointers (P. 12)
- Safety Remote Side Head Jointers (P. 13)
- Semi-Automatic Adjustment of After-Cut Shoes (P. 14)
- Remote-Controlled 1st Bottom Roll Adjustment (P. 15)
- Automatic Adjustment Of Hold Over Rolls (P. 16)
- Safety Side Head Jointer (P. 17)
- Electronic Pressure Controllers (P. 18)
- Quick Release on Airbags (P. 19)

Heavy-Duty Upgrades

- Double Jack For Bottom Heads (P. 21)
- Improved Chip Breakers (P. 22)
- Wear Parts (P. 23)
- Heavy Duty Quick-Open Side Press Roll (P. 24)
- Hold Down Shoes Between Side Heads (P. 25)
- Cooling System (P. 26)
- Top Roll Assembly Collar (P. 27)

Gilbert Line of Planers

- S-Series Planer (P. 56)
- Moulder Planer (P. 57)
- Timber Power Planer (P. 58)

Feed Table Upgrades

- Heavy-Duty Feed Table and Bridge (P.29)
- Entry Power Bridge Modification (P.30)
- Third Pineapple (P. 31)
- Fourth Pineapple (P. 32)
- Retractable Arm for Bridge (P. 33)
- Clean-Up Brush (P. 34)
- Pineapples (P. 35-36)
- Rolls (P. 37-40)

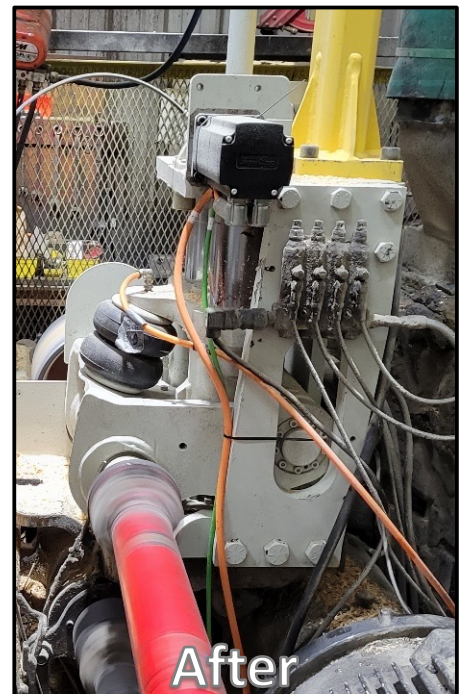
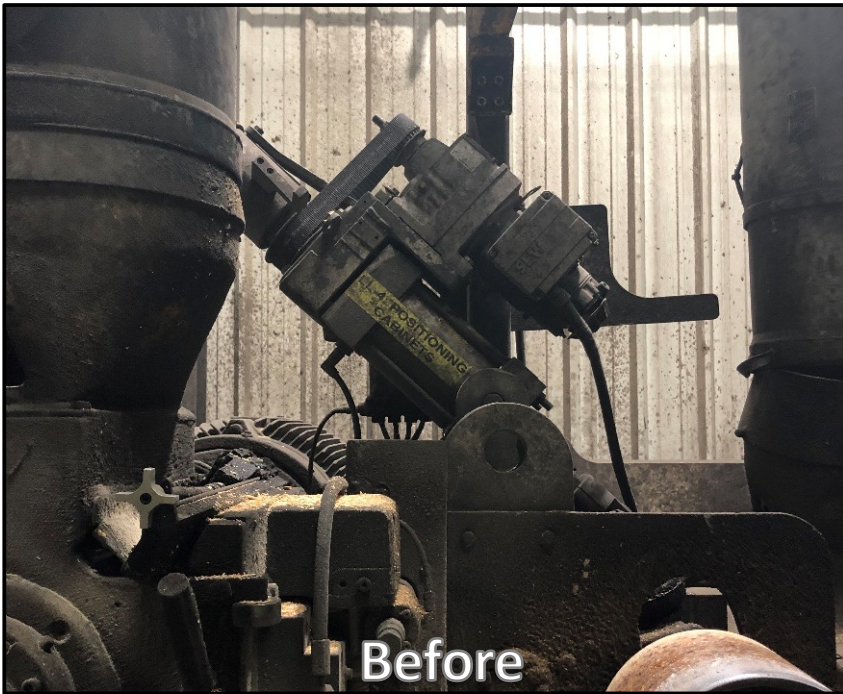
Cutterheads

- GILBERT Side Heads (P. 42)
- Hydro-Grip Triple Pattern Side Heads (P. 43)
- Hydro-Grip Top and Bottom Heads (P. 44)
- Key Knife Cutterheads (P. 45)
- Realignment Jig for Top and Bottom Heads (P. 46-47)
- Top and Bottom Head Handling Tool (P. 48)

Outfeed Line

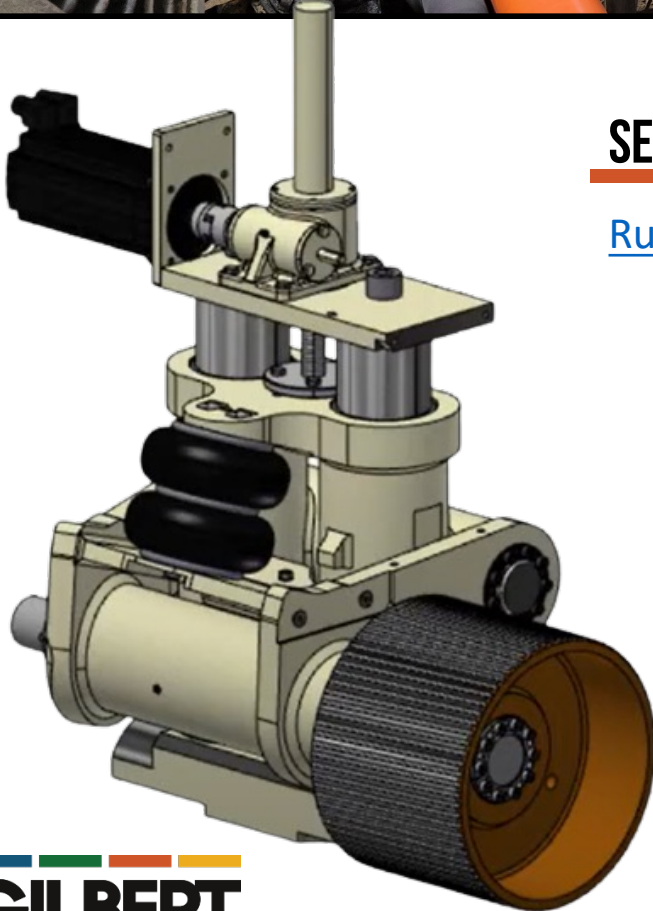
- Profile / Splitting Module (P. 50)
- Slowdown Belt (P. 51)
- Slowdown Brush (P. 52)
- Outfeed Belt (P. 53)
- Outfeed Bridge (P. 54)

HEAVY DUTY TOP ROLL SYSTEM WITH HEIGHT ADJUSTMENT TO RETROFIT ON PLANERS USING AIR CYLINDERS



- New heavy-duty and compact design to improve performance;
- Increases traction, really helps feeding wide products;
- Adjusts automatically for all different thicknesses;
- All recipes are saved in networks. For example : decking 5/4 to 6x6 in just a few seconds;
- Considerably reduces maintenance

HEAVY DUTY TOP ROLL SYSTEM WITH HEIGHT ADJUSTMENT TO RETROFIT ON PLANERS USING AIR CYLINDERS



SEE IT IN REAL TIME

 **YouTube**

[Russellville Infeed with Third Pineapple](#)

GRIP SYSTEM TO REPLACE AIR CYLINDERS

Gilbert Roll Intelligent Positioning System

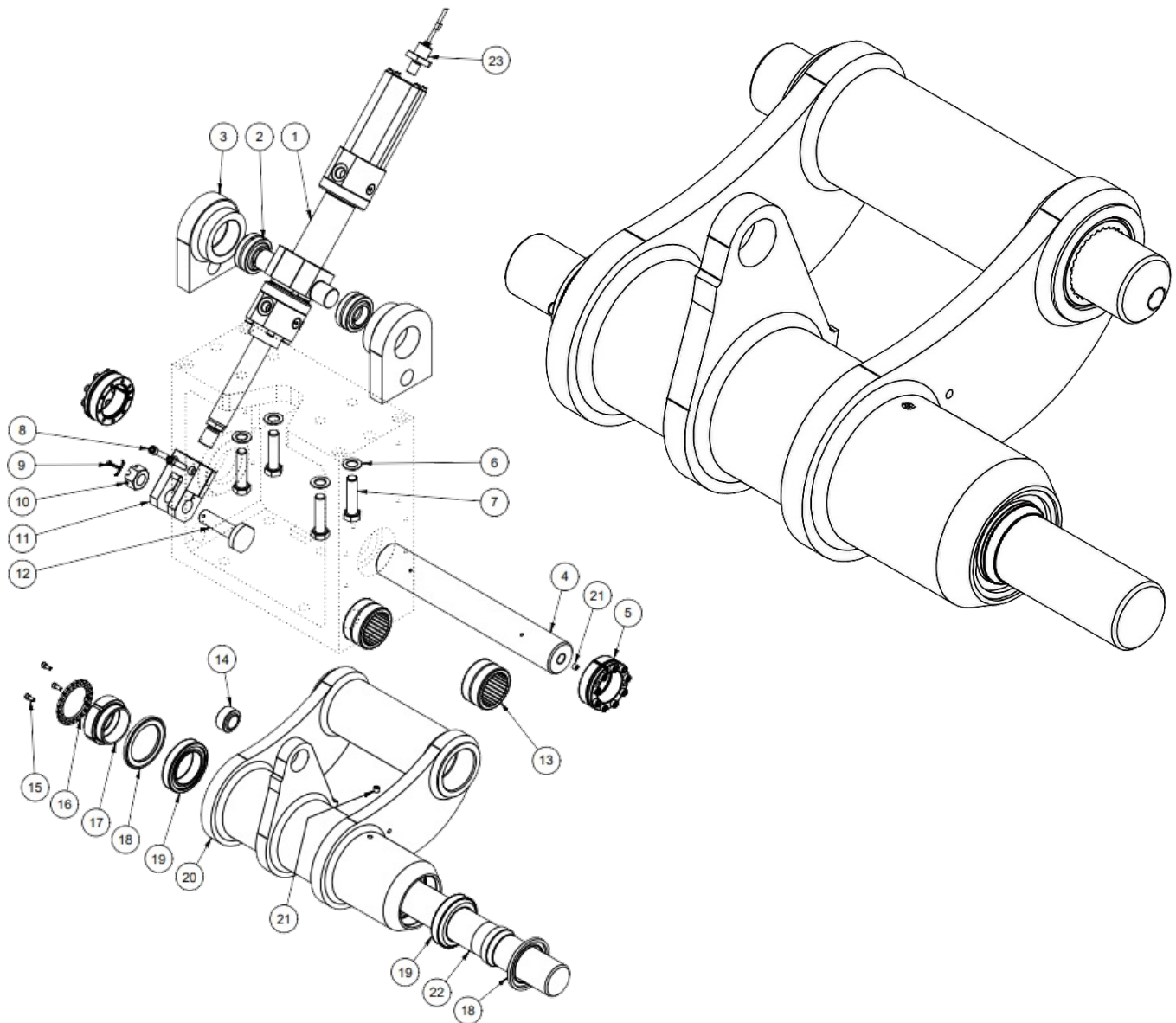


Increase piece count without running faster

Reduce gap, gain production

- System to replace air cylinders for all top feed table and planer rolls;
- Easy to install on GILBERT planers with a nice bolt on pattern, **no welding required**;
- It moves the rolls to position and hold contact on the board;
- User friendly HMI for recipe selection and calibration;
- Saved recipes for height adjustment;
- Increased traction;
- Increase life expectancy of the mechanical components;
- Hydraulic system with servo valves.

NEW BALANCER



- With the GRIP system we recommend changing all the lower balancers.
- Built with a new bearing design for less wear;
- Greaseable bearings.

AUTOMATIC CUTTERHEAD POSITIONING SYSTEM RETROFIT FOR OLDER MODEL PLCS



- Controls can be done with Schneider or Allen Bradley. PLC and servomotors;
- Quick release system and immediate return to production after wood jamming;
- System permits to predetermine all manufactured products
- All recipes are saved;
- Changes in production are possible and very quickly (egg: 2x3 to 2x6).



iPad Option

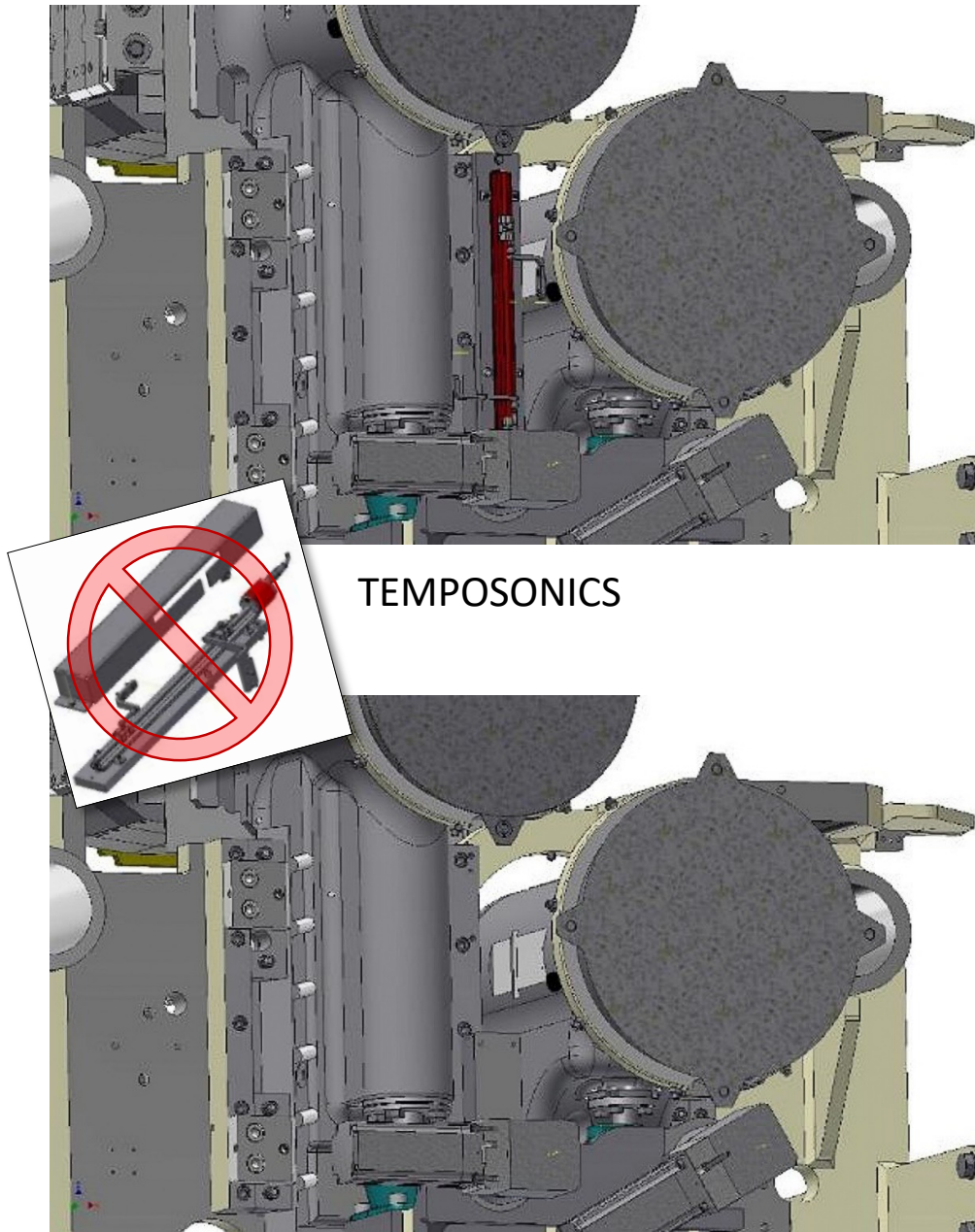
- Make adjustments using an iPad from anywhere in the mill.



[Watch on YouTube](#)

AUTOMATIC CUTTERHEAD POSITIONING SYSTEM

Replace Temposonics by Rotary Encoders

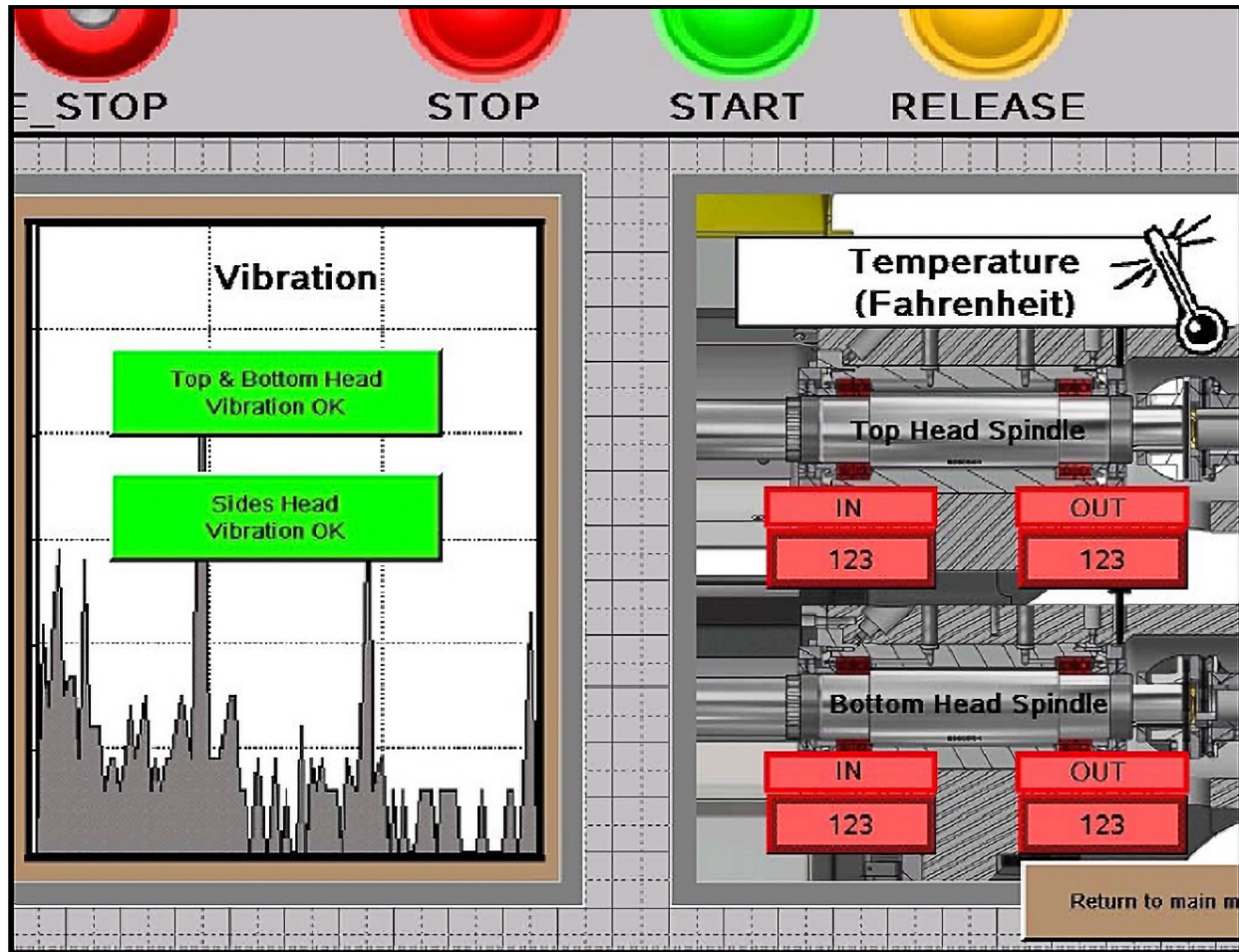


TEMPOSONICS

NEW SERVO MOTORS WITH ENCODERS

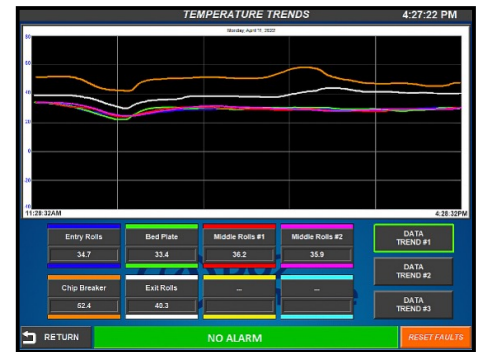
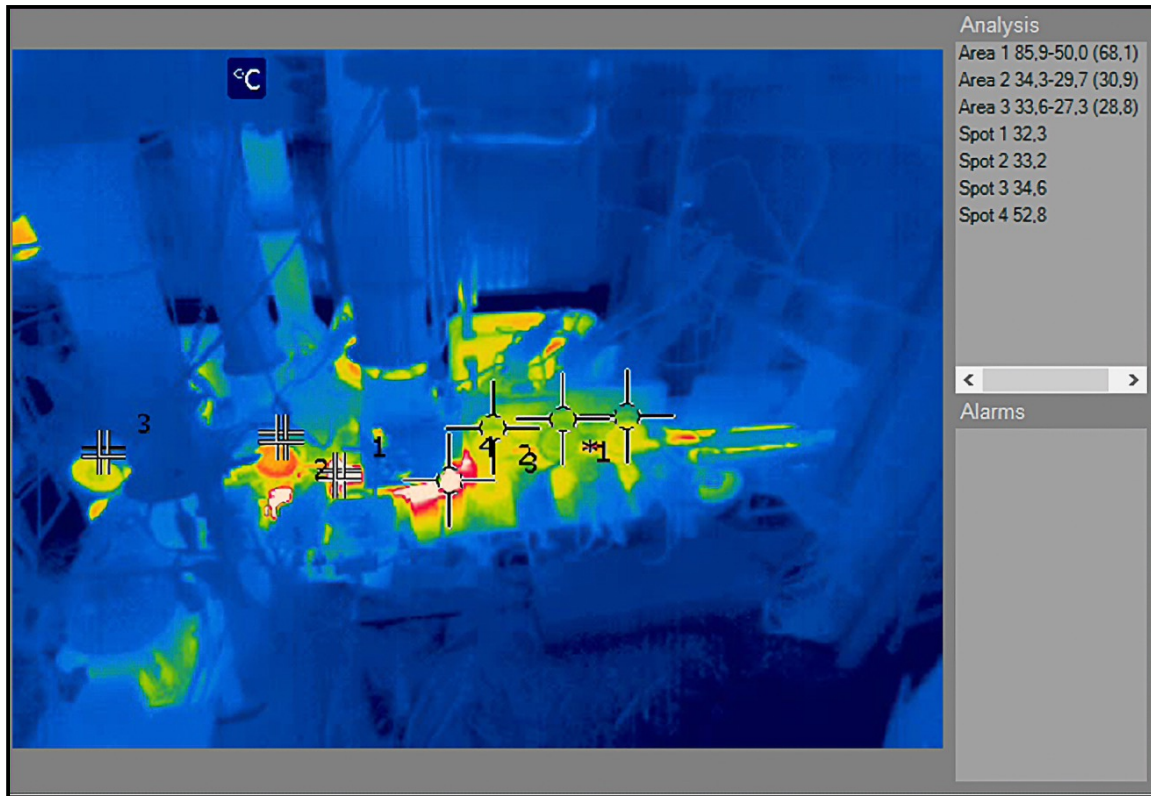
- Replace servo motors on 4 cutterheads to remove Temposonics;
- Less maintenance.

GILBERT PLANER VIBRATION AND TEMPERATURE MONITORING SYSTEM



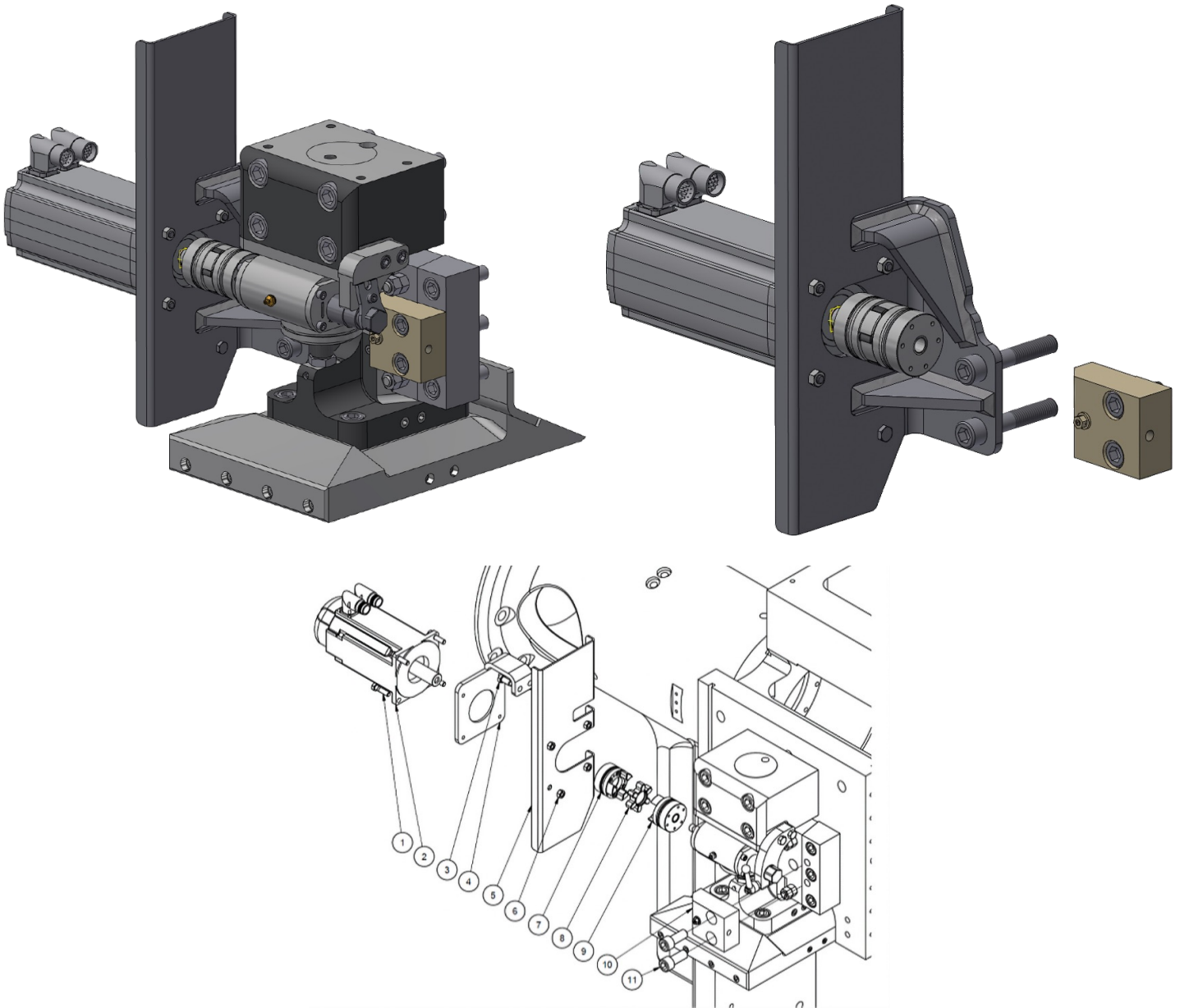
- Installed directly on spindles;
- When temperature goes over the given limit, the value becomes red;
- Detect unusual vibration and heat to alert of a potential issue;
- Possibility of interlocking the alarm output with another PLC;
- Helps to plan long term maintenance;
- Alarm on screen.

GILBERT PLANNER TEMPERATURE MONITORING SYSTEM TO PREVENT FIRES OR OVERHEATING



- Thermal imaging cameras (FLIR) to monitor hotspots;
- Prevents overheating and premature wear;
- Includes a 15" touchscreen, mini-computer, thermal cameras & audiovisual alert;
- Programmable for a specific spot or a zone e.g : guide bar or bed plate
- Can be entirely stand-alone or connected to the mill PLC;
- Provides temperature graphs (°C or °F) in real-time readings and keeps a 24h history;
- Fire hazard is now much more controlled.

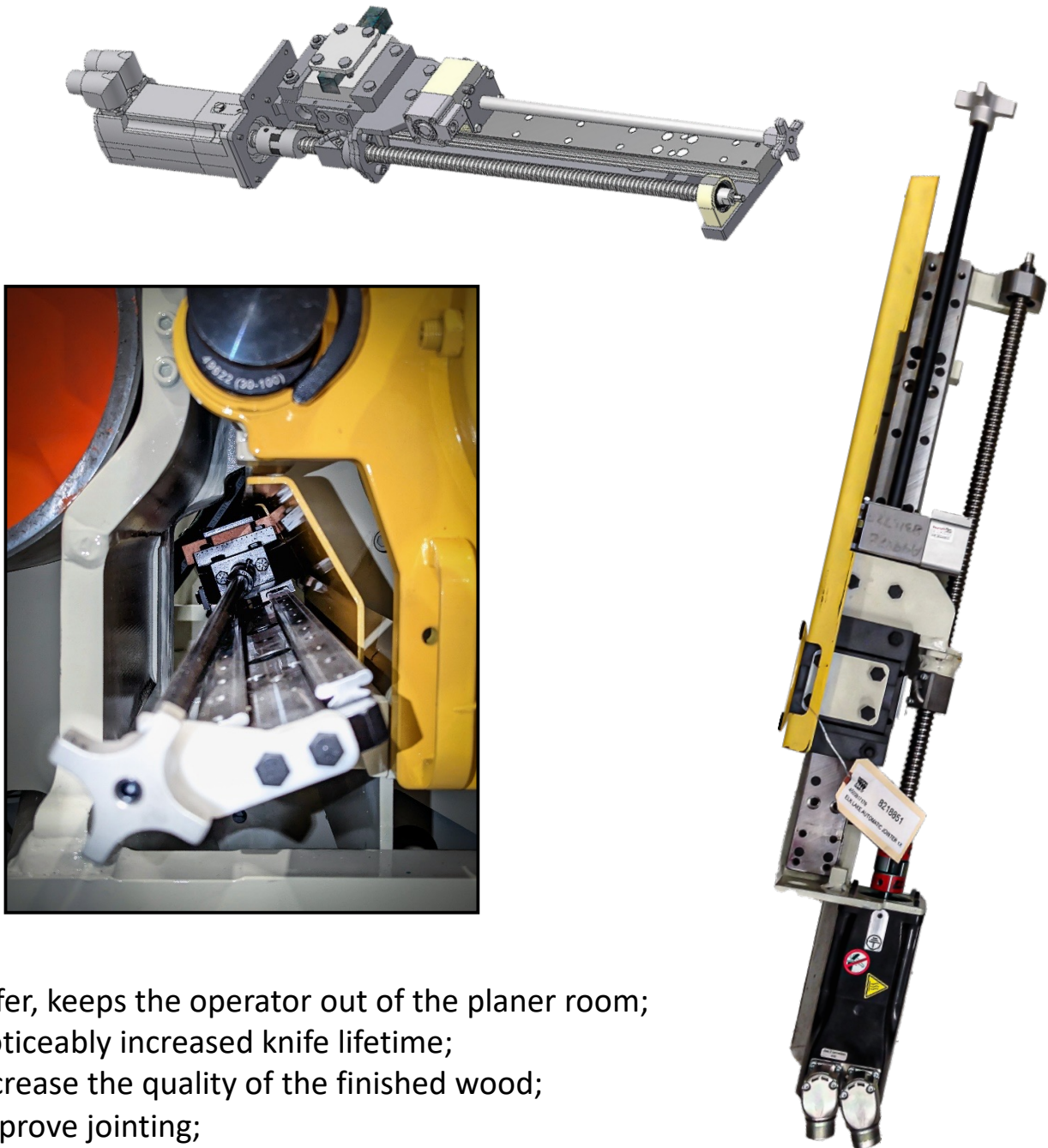
REMOTE-CONTROLLED TOP HEAD PRESSURE PLATE



- Safer, keep the operator out of the planer room;
- Add a servo motor to planer's pressure plate for perfect precision;
- Controlled by the Gilbert Remote Positioning System;
- Increased efficiency;
- The system can be used remotely right after jointing the cutterheads;
- Includes servo motor, bracket and drive.

SAFETY REMOTE TOP AND BOTTOM HEAD JOINTERS

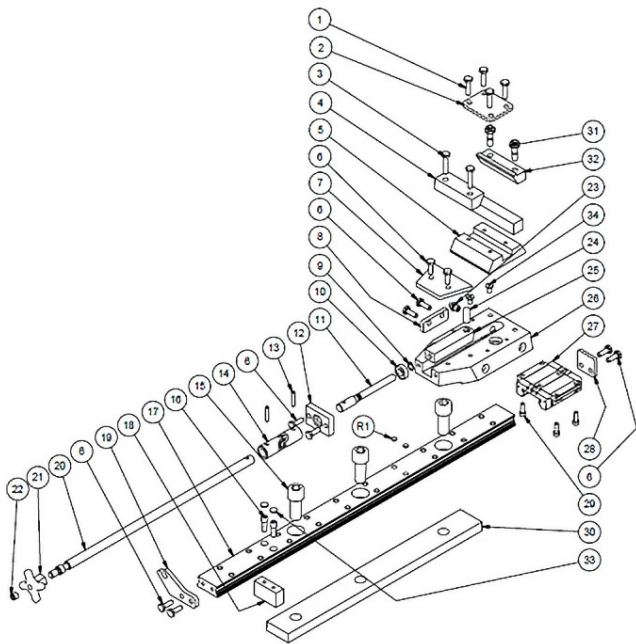
Semi-Automatic Top & Bottom Head Jointers



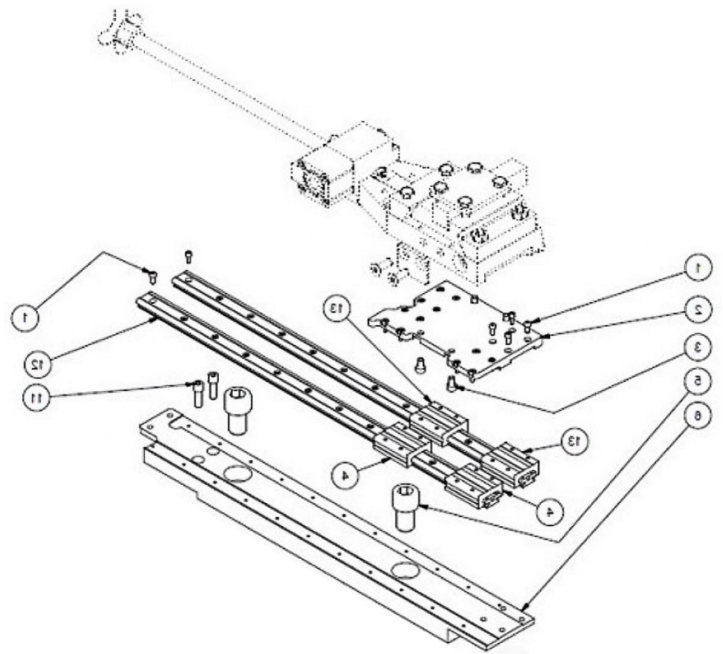
- Safer, keeps the operator out of the planer room;
- Noticeably increased knife lifetime;
- Increase the quality of the finished wood;
- Improve jointing;
- Very precise system;
- Easy to use;
- Can be use in semi-automatic or manual mode.

UPGRADE FOR TOP AND BOTTOM HEAD JOINTERS

Upgrade for Existing Top & Bottom Head Jointers



OLD DESIGN

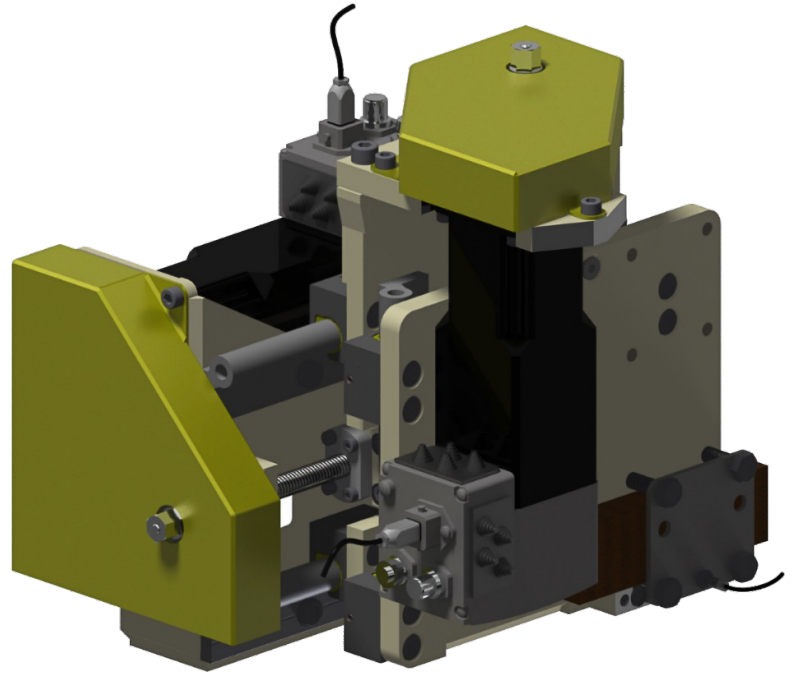
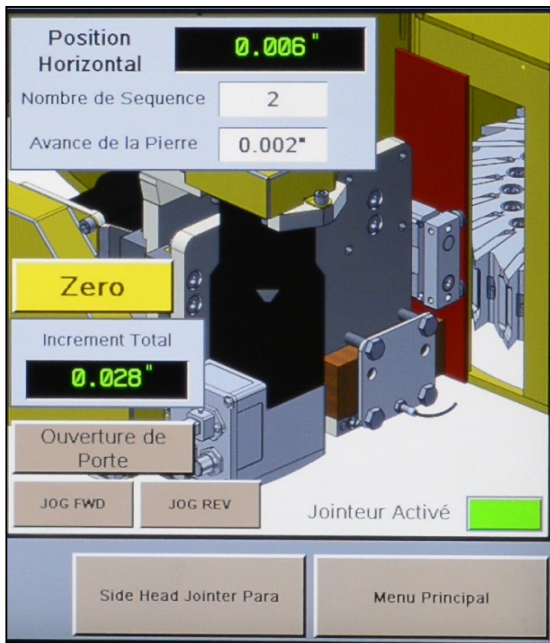


NEW DESIGN

- Double bearing track;
- Ceramic bearing;
- Less maintenance.

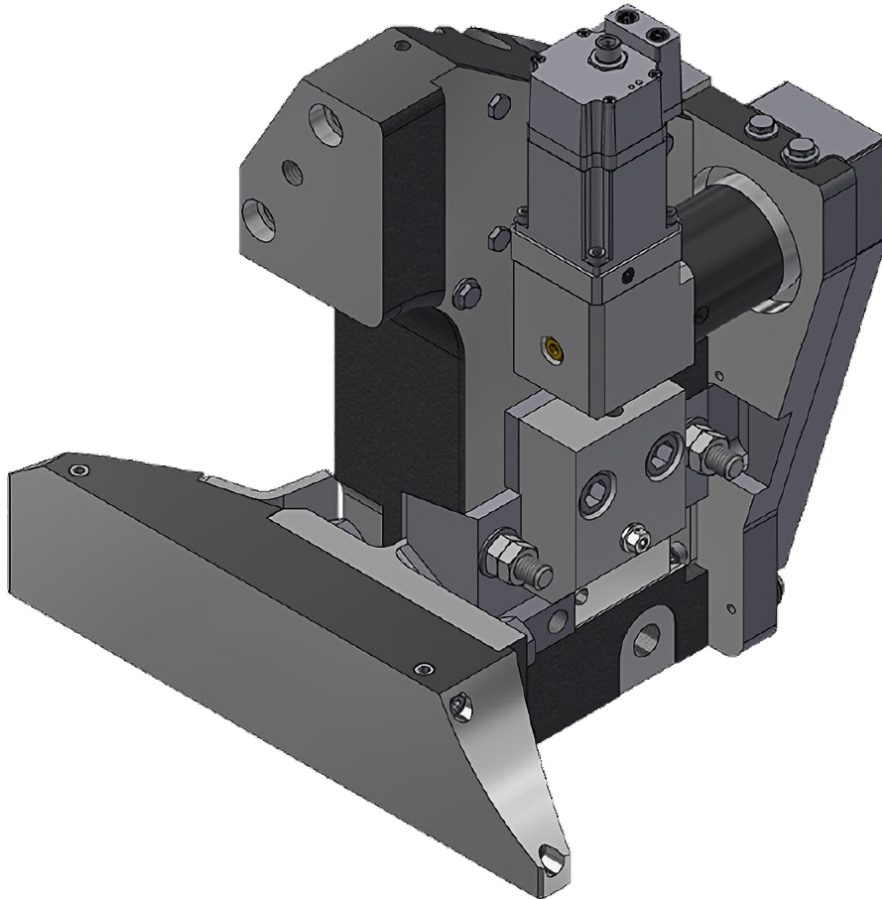
SAFETY REMOTE SIDE HEAD JOINTERS

Remote controlled Side Head Jointers



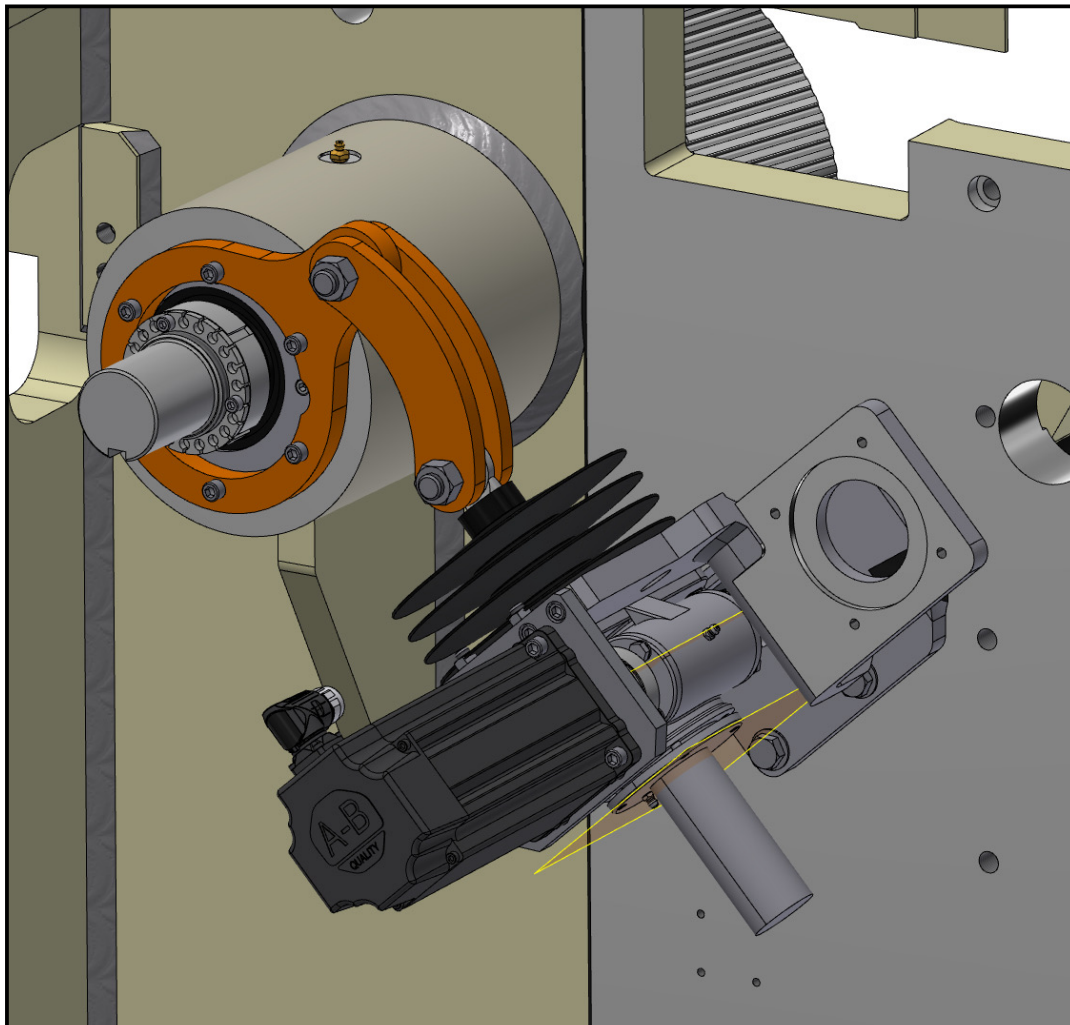
- Safer, keeps the operator out of the planer room;
- Noticeably increased knife lifetime;
- Very rapid payback on knives;
- Increase the quality of the finished wood;
- Knives are jointed with uniformity and with greater accuracy;
- Keep perfect radius all the time;
- Very precise set up;
- Reduced grinding time;
- 2 models available:
 - 2 axis (Vertical and horizontal)
 - 1 axis (Horizontal only)

SEMI-AUTOMATIC ADJUSTMENT OF AFTER-CUT SHOES



- Safer, keep the operator out of the planer room;
- Semi-Automatic adjustment of the two (2) after-cut shoes;
- Servo motors installed
- Same function as the pressure plate after the top head;
- Jointing of the side heads is now done from outside of the planer room. You can then adjust the after-cut shoe according to new cutting circle from outside as well;

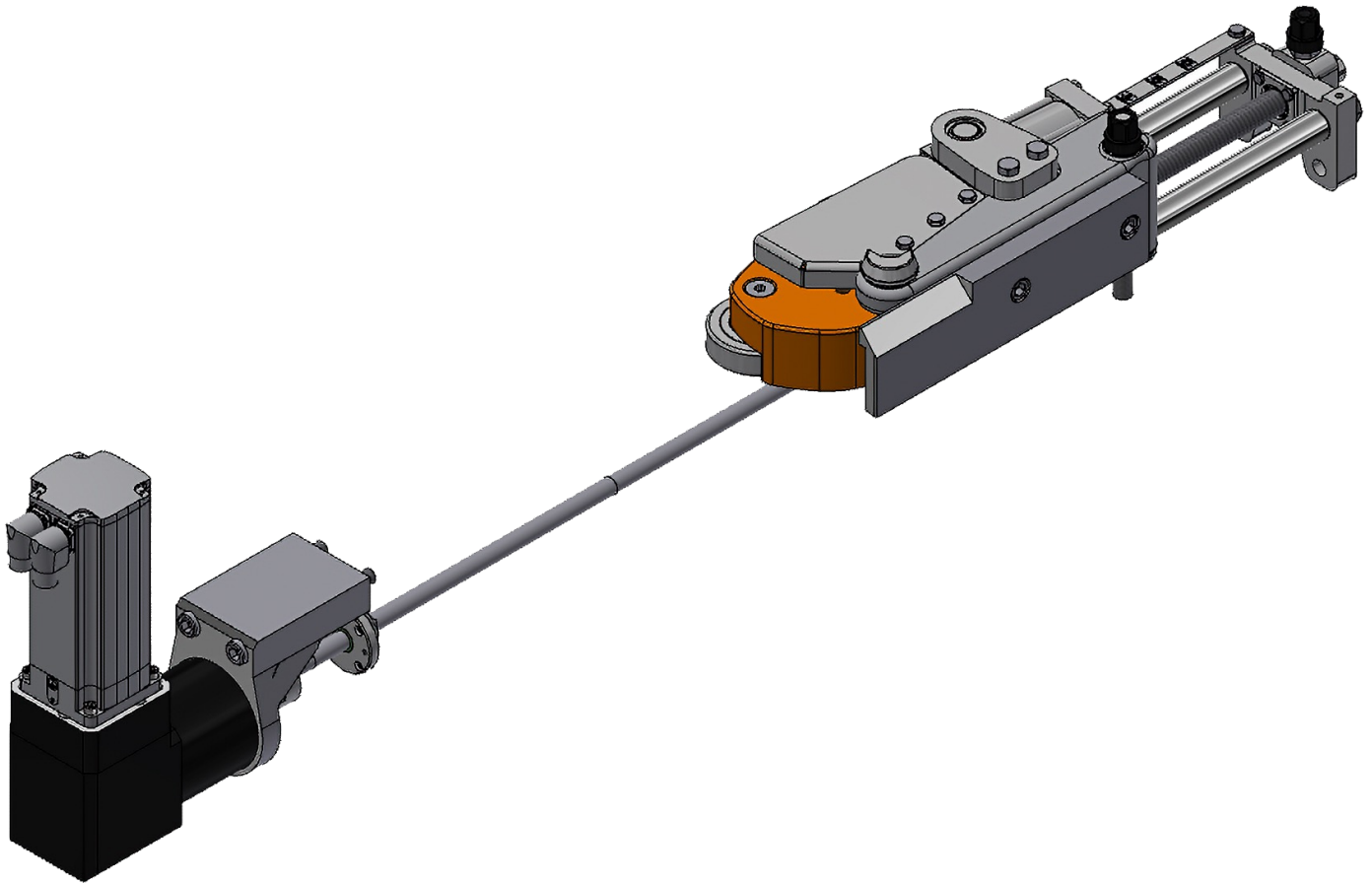
REMOTE-CONTROLLED FIRST BOTTOM ROLL ADJUSTMENT



For GILBERT 6 Roll Planers

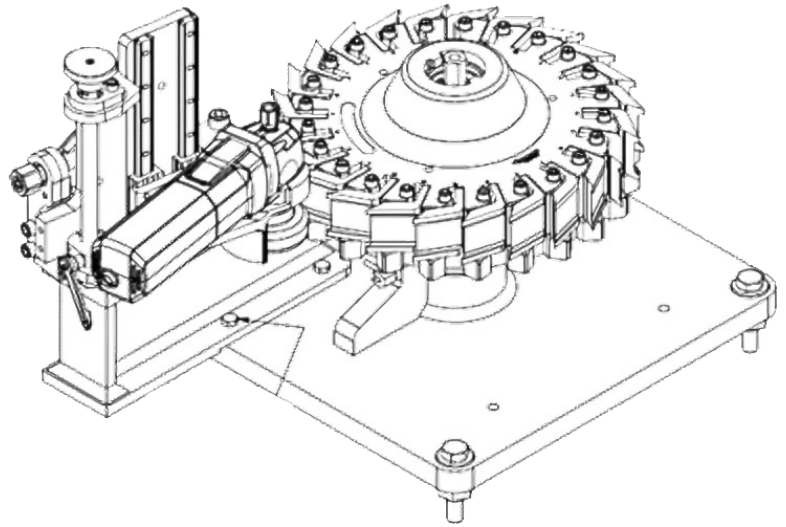
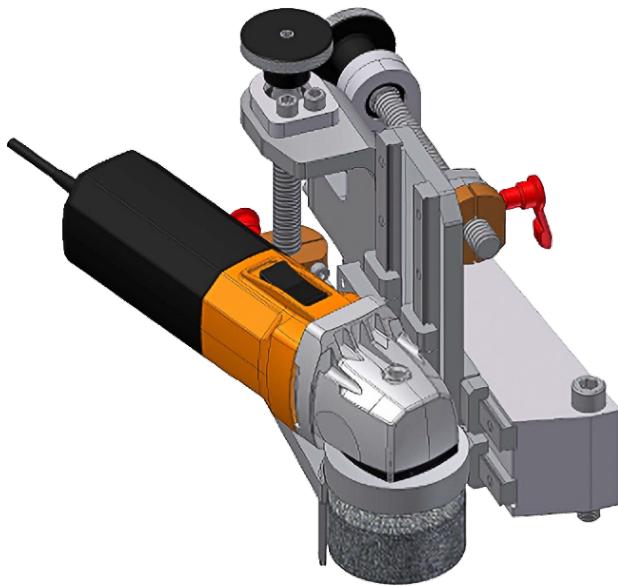
- Safer and increases efficiency;
- A servo motor is installed and is connected to the Gilbert controller to adjust the infeed bottom roll;
- Controlled by the Gilbert Remote Positioning System;
- Always see bottom roll position on positioning system screen.

AUTOMATIC WIDTH ADJUSTMENT OF HOLDOVER ROLLS

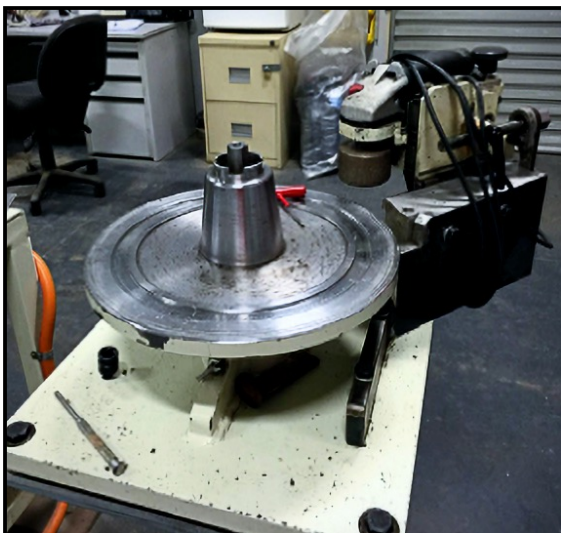


- Save time changing from one width to another
- Automatic adjustments for changing from one width to another;
- A servo motor is installed and is connected to the Gilbert controller;
- All width adjustments saved in the Gilbert positioning system.

SAFETY SIDE HEAD JOINTER

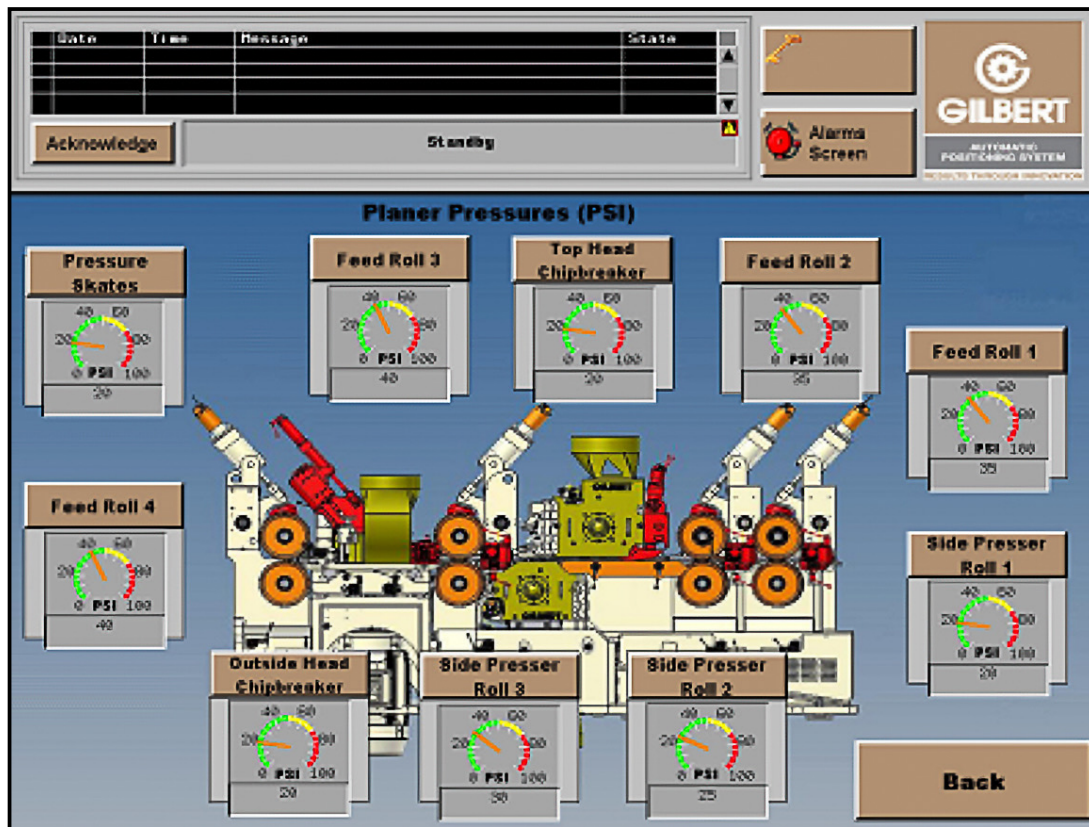


- Joint knives when motor is stopped and locked out, much safer for operator;
- Knives are jointed with uniformity and with greater accuracy;
- Very precise set up;
- Keep perfect radius all the time;
- Reduced grinding time;
- Noticeably increased knife lifetime;
- Increase the quality of the finished wood;
- Very rapid payback on knives.



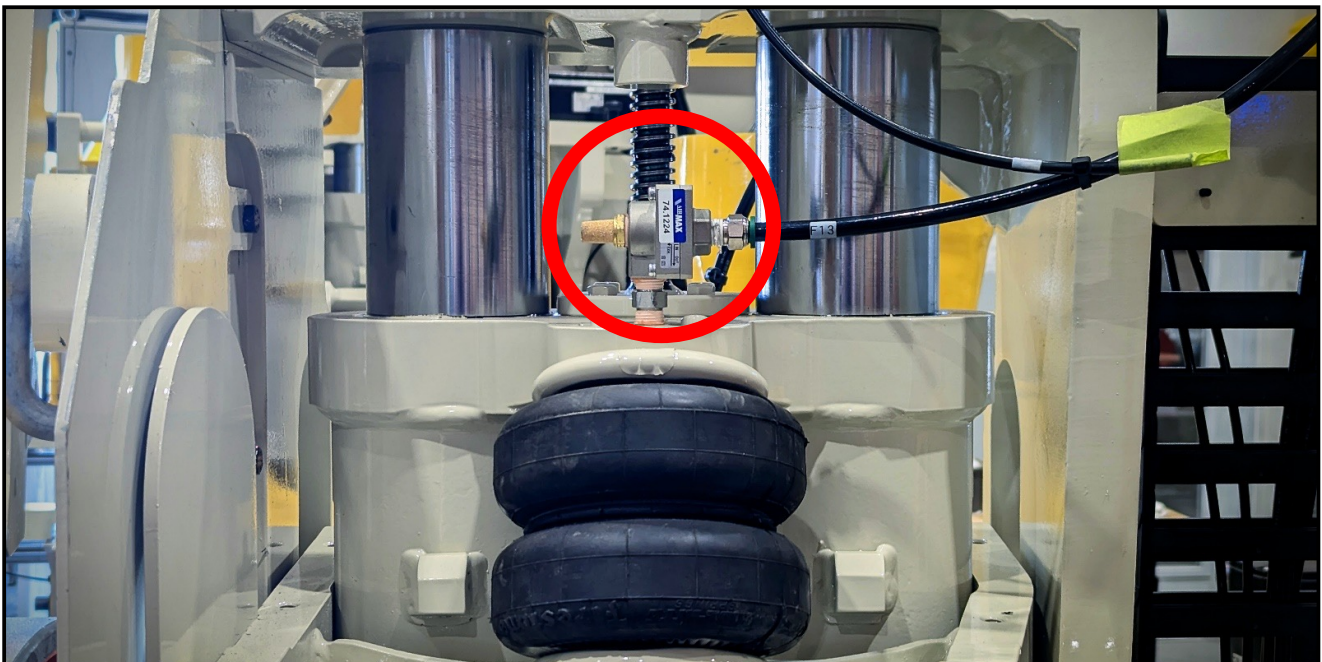
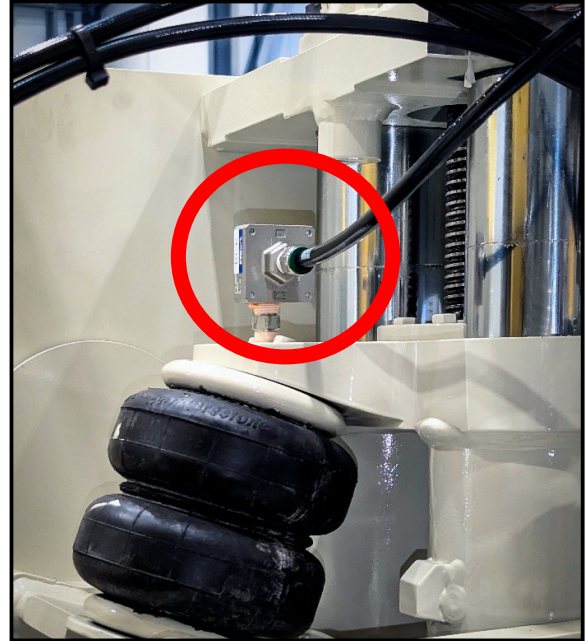
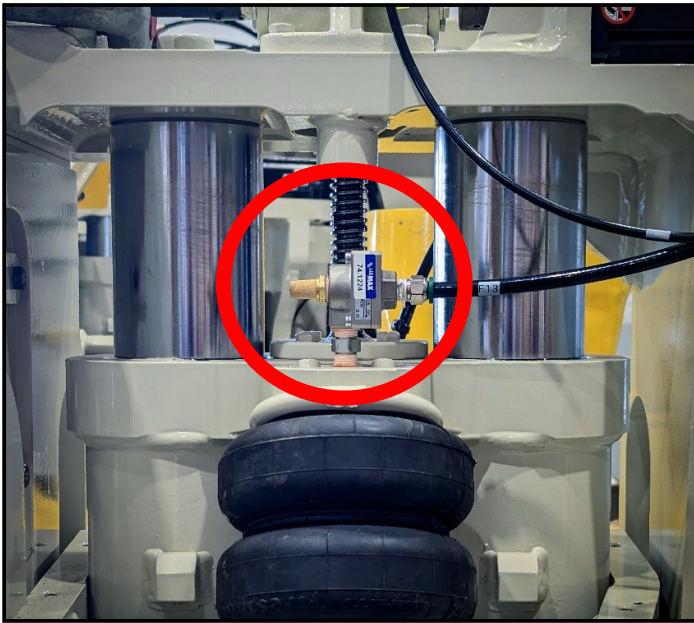
Instead of jointing directly on the planer, it is possible to install the jig in the grinding room. Joint the knives in the grinding room and install the heads in the planer afterwards.

ELECTRONIC PRESSURE CONTROLLERS



- Air bag automatic pressure adjustment according to the production;
- Electronic valves;
- Automate all the functions which used to be manual;
- Manifold block with the proportional electronic valves assembled;
- All pneumatic adaptors;
- Fixing plate for installation of valves in the air console;
- Installation drawings and pneumatic schema.

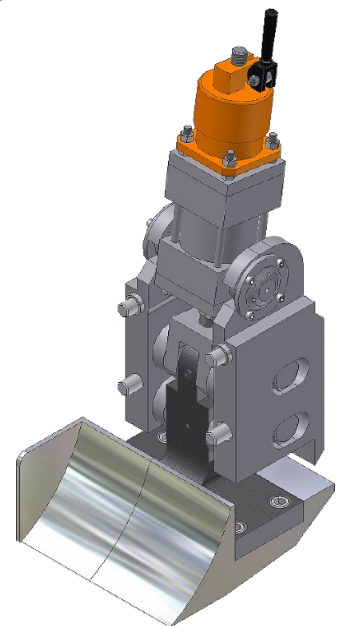
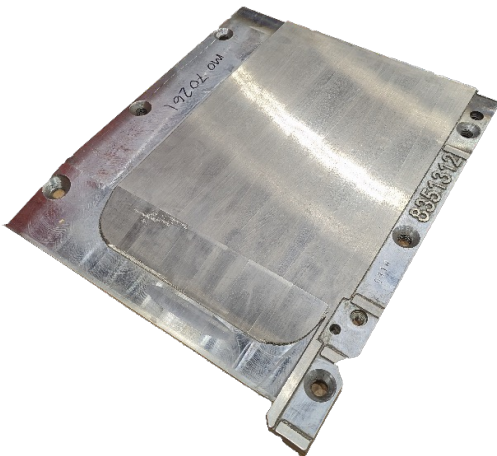
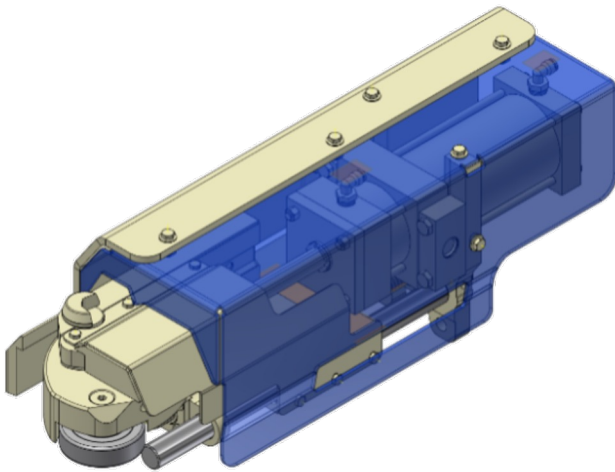
QUICK RELEASE ON AIRBAGS



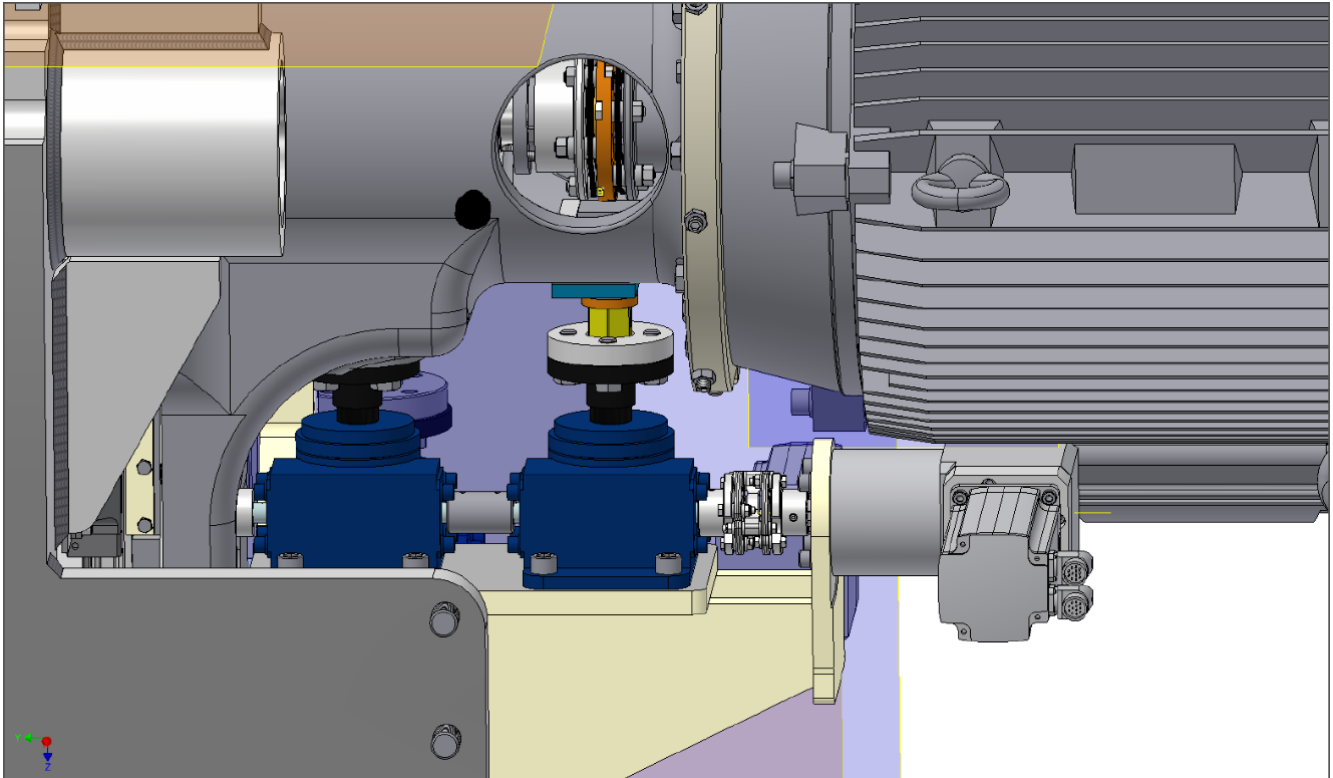
- Improves feed roll control on boards;
- The quick exhaust valve allows to have a constant pressure on the boards without exceeding the value requested by the air regulator;
- Improves efficiency and speed.

HEAVY-DUTY UPGRADES

- Double Jack For Bottom Heads (**P. 21**)
- Improved Chip Breakers (**P. 22**)
- Wear Parts (**P. 23**)
- Heavy Duty Quick-Open Side Press Roll (**P. 24**)
- Hold Down Shoes Between Side Heads (**P. 25**)
- Cooling System (**P. 26**)
- Top Roll Assembly Collar (**P. 27**)

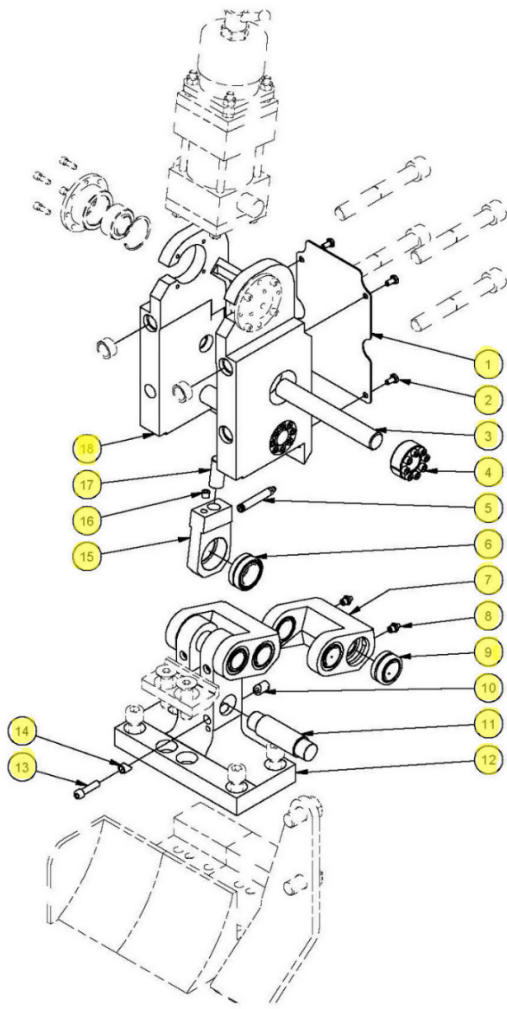


DOUBLE JACK FOR BOTTOM HEADS

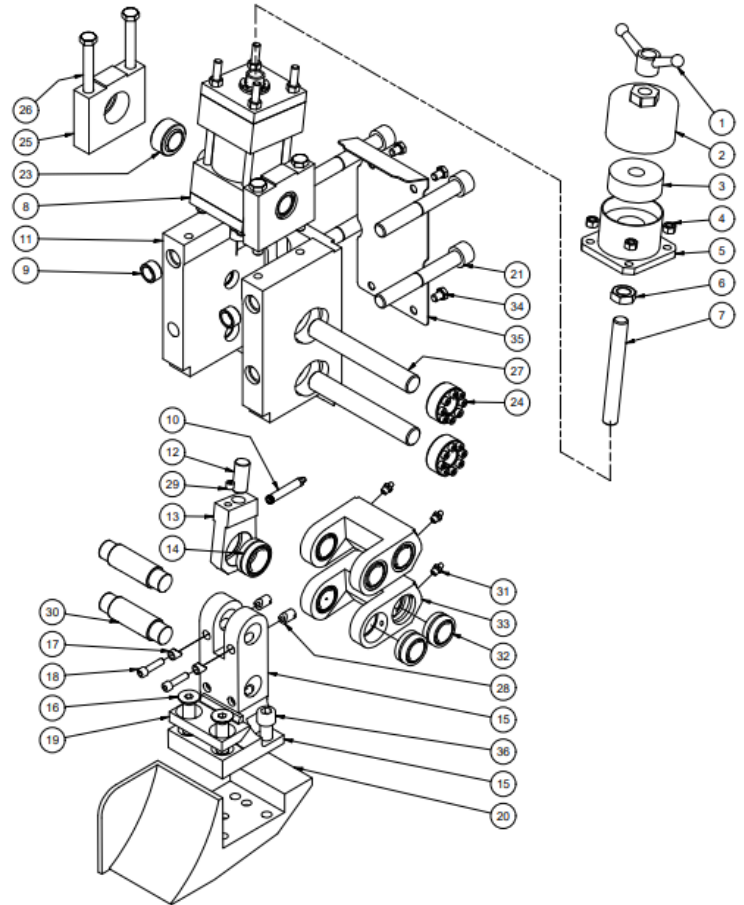


- Install a second jack on bottom head for increased support.
- Helps with 12" wide cutterheads

IMPROVED CHIP BREAKERS WITH GREASABLE BEARINGS



Repair Kit



New Chip Breaker

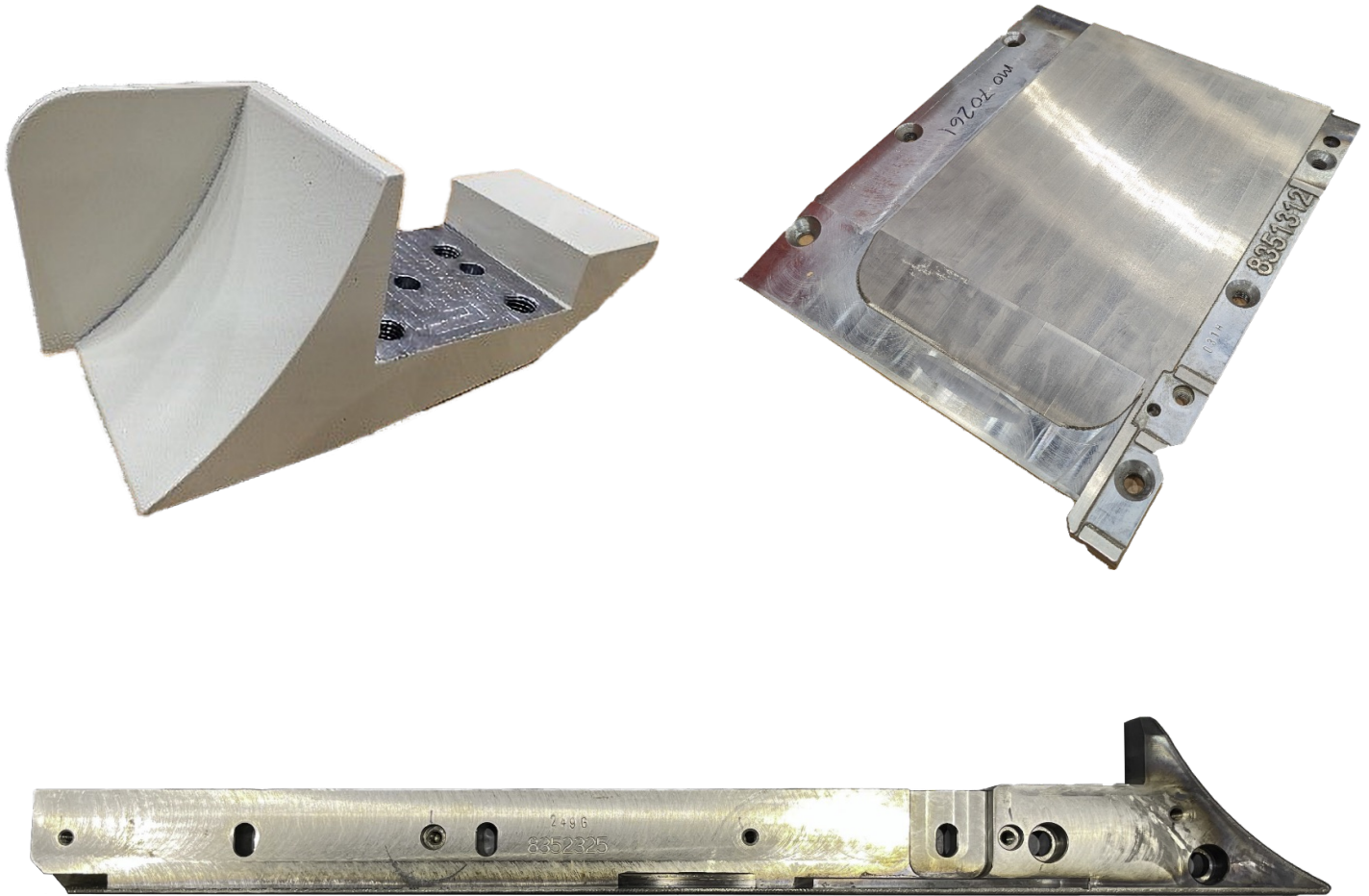
Option #1: Needle Bearing Repair Kit

- Stronger roller bearings;
- Re-greaseable;
- Stronger and longer lasting frame and built;
- Highlighted in yellow are the new parts of the repair kit.

Option #2: New Chip Breaker

- Built with the Heavy-Duty needle greaseable bearings;
- Much longer lifetime of complete chip breaker;
- New Gilbert tungsten coating.

ENHANCED WEAR PARTS

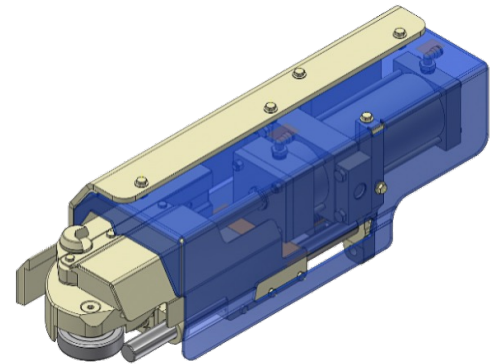


- Special tungsten cladding for bed plates, guides chip breakers & more;
- New coating lasting 3 to 4 times longer than original chrome;
- Contact us to get NEW part numbers;
- Extra tough;
- Fast delivery.

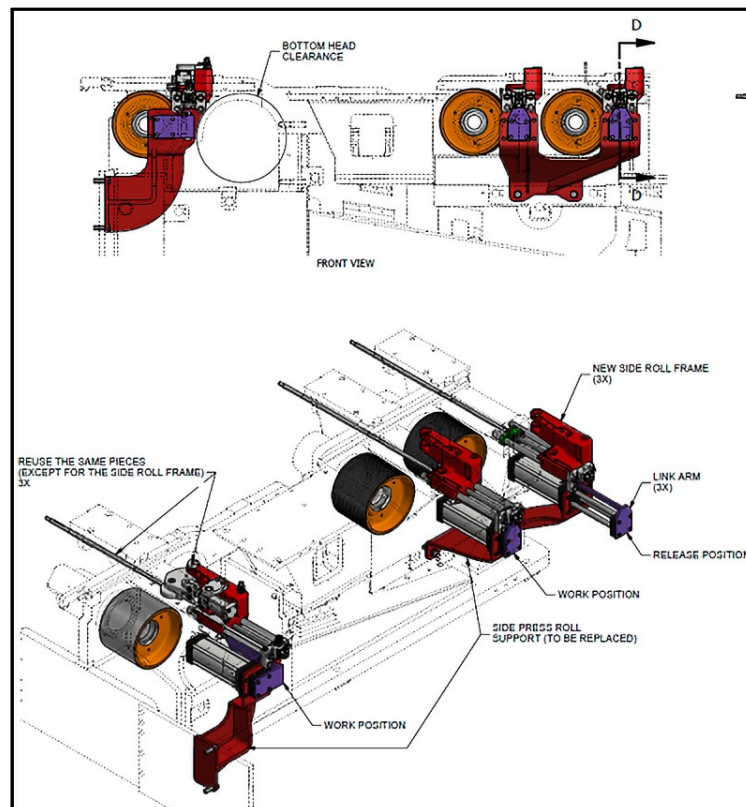
HEAVY DUTY QUICK OPEN SIDE PRESS ROLL



- Easy opening of press rolls activated by air cylinder;
- Stronger design;
- Easy to open after a wood jamming;
- This update will replace the existing holdover roll.



Extra Support

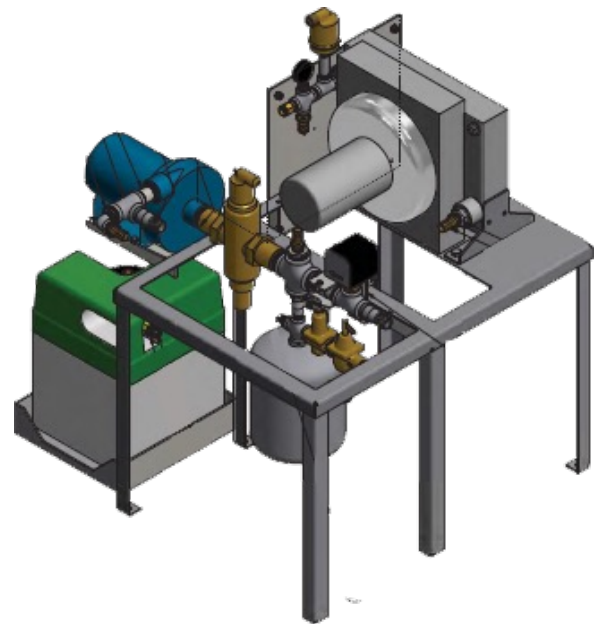
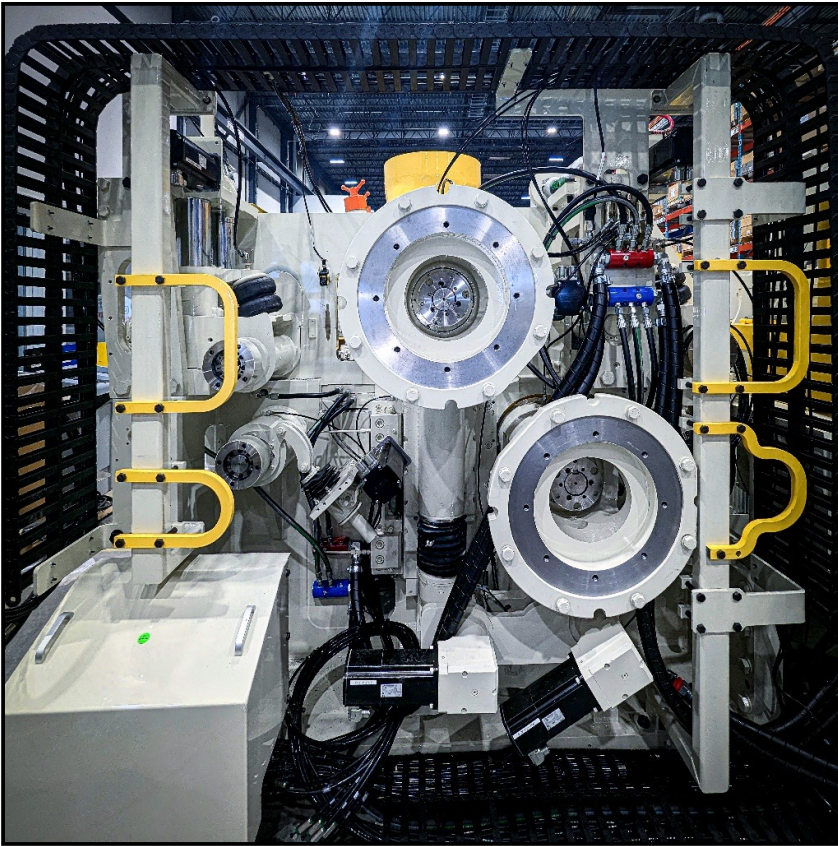


HOLDDOWN SHOES BETWEEN SIDE HEADS



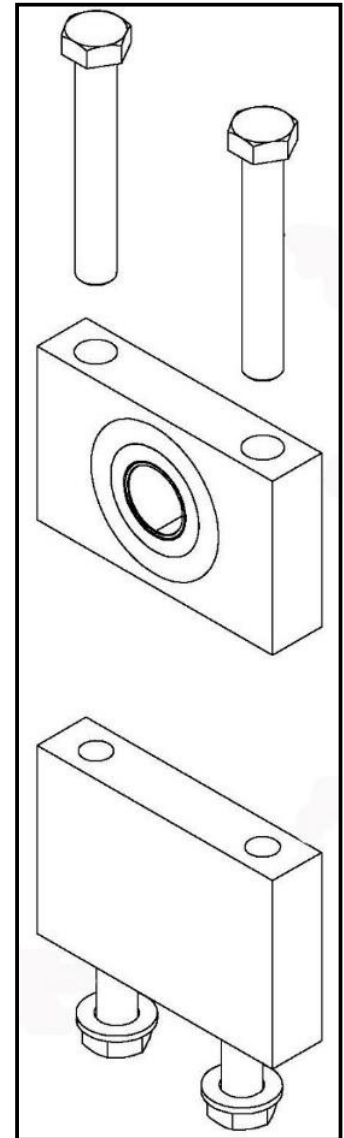
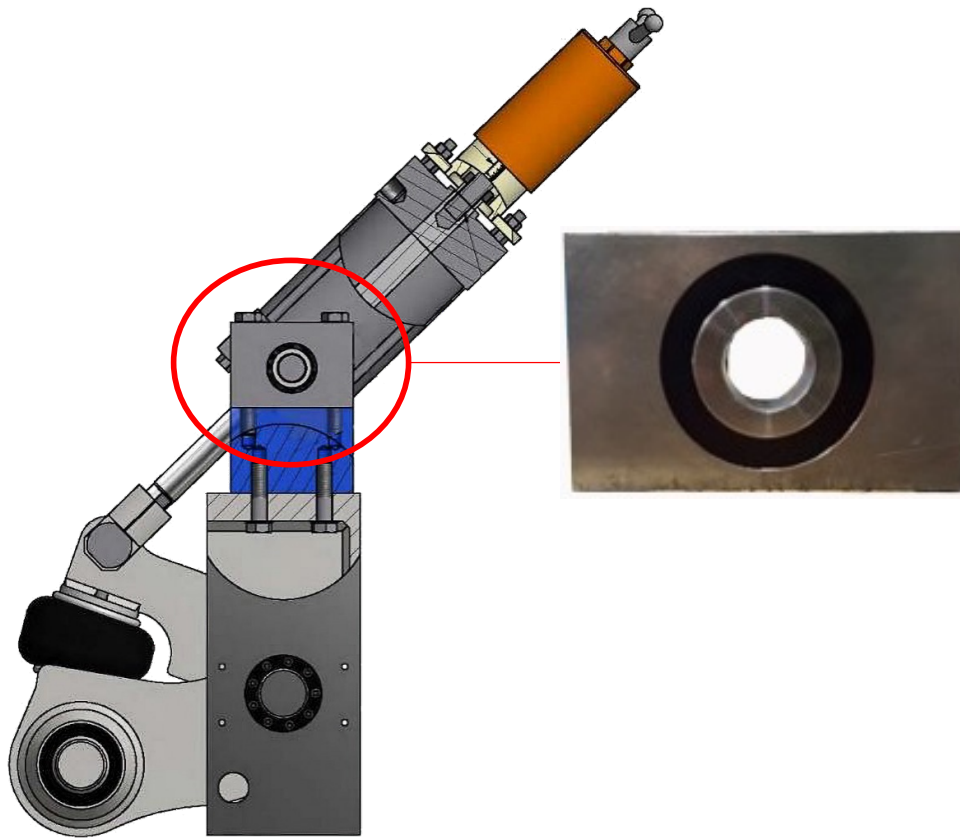
- Good pressure against wood thus obtaining accurately edges, eliminating skips on the end and avoiding the downgrading of the wood;
- Installed on linear bearings instead of dovetails;
- Easy to adjust as it has a pneumatic cylinder with proper pressure adjustment;
- More robust;
- Cooling plate using the existing cooling system;
- Possibility to add remote height adjustment.

COOLING SYSTEM



- Gilbert has developed a new cooling system that will work very well with any product (even with only water);
- It delivers 20 gallons/min instead of 4 gallons/min;
- Gilbert now installs hydraulic hoses instead of plastic hoses for the cooling system;
- Small tank with a low-level alarm;
- With this solution there should be no premature wear on any of the planer parts;
- Upgrade of existing cooling system also available.

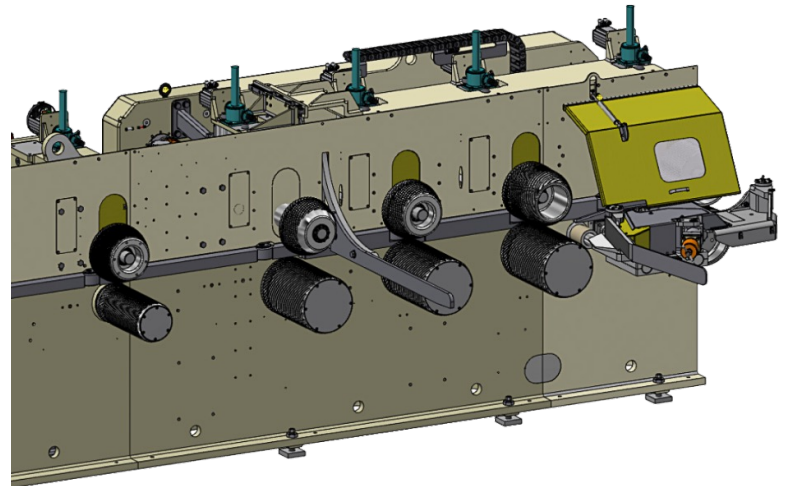
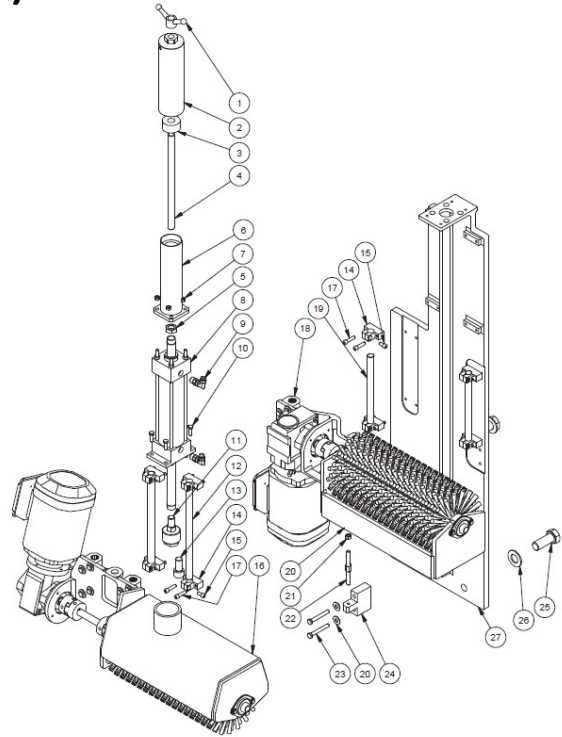
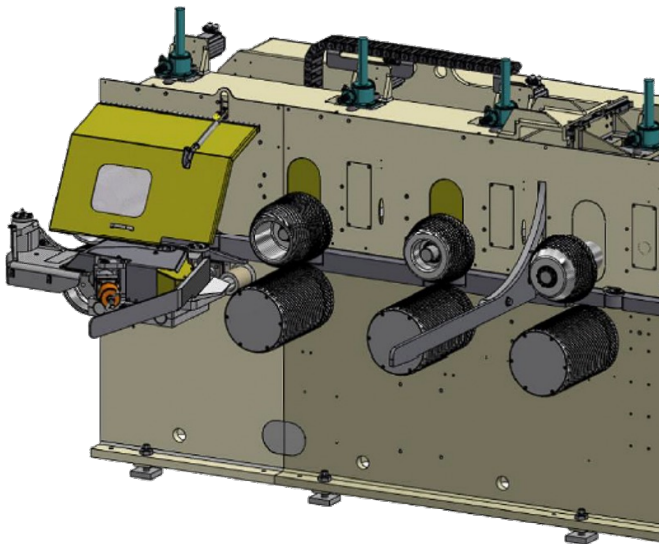
TOP ROLL ASSEMBLY COLLAR



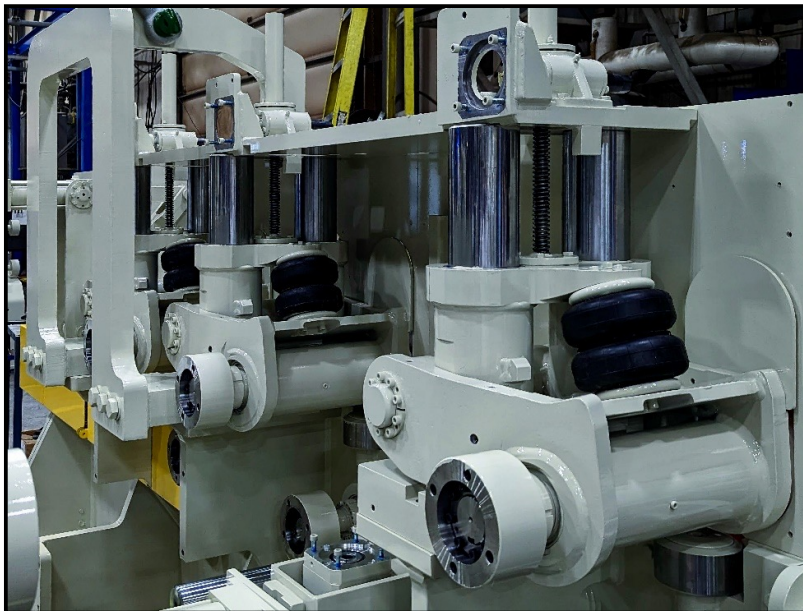
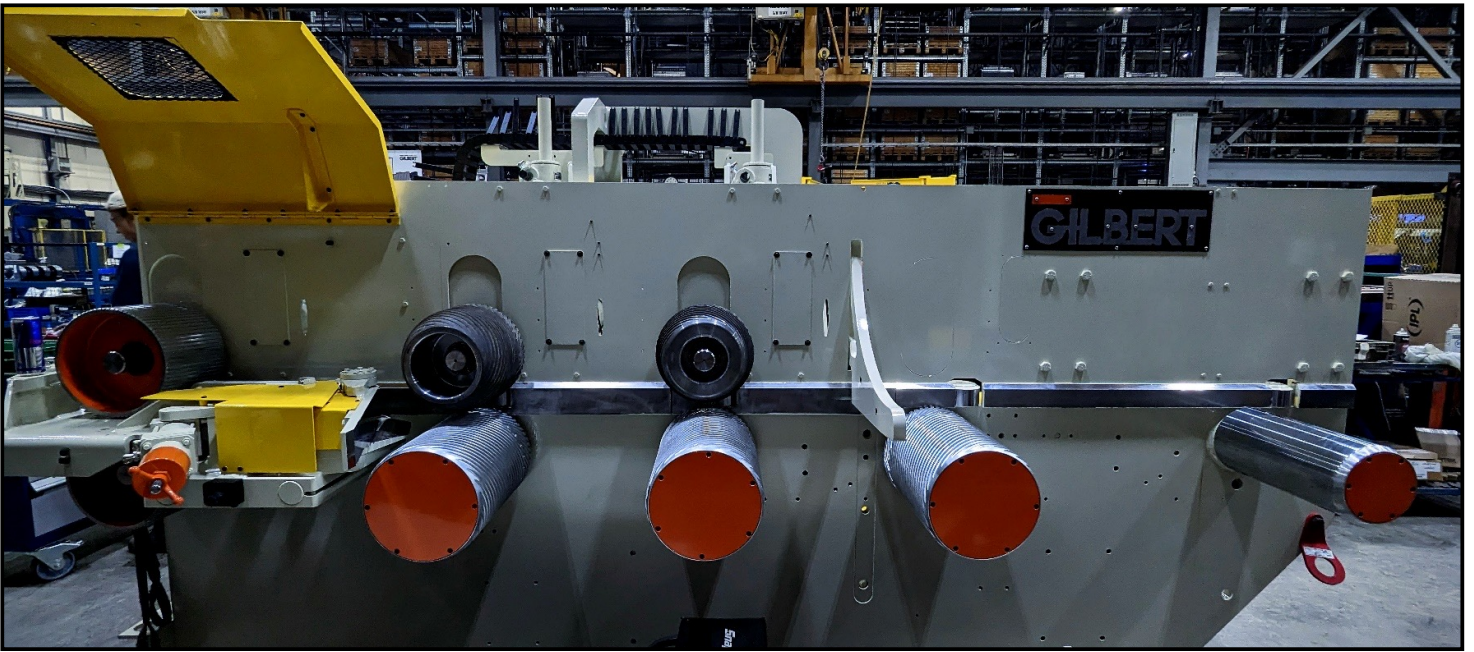
- Upgrade for air cylinder.
- Polyurethane bushing;
- For all top roll modules;
- One set of two per top roll;
- Installed on both sides of cylinder;

FEED TABLE UPGRADES

- Heavy-Duty Feed Table and Bridge (P. 30)
- Third Pineapple (P. 31)
- Fourth Pineapple (P. 32)
- Retractable Arm for Bridge (P. 33)
- Clean-Up Brush (P. 34)
- Pineapples (P. 35-36)
- Rolls (P. 37-40)

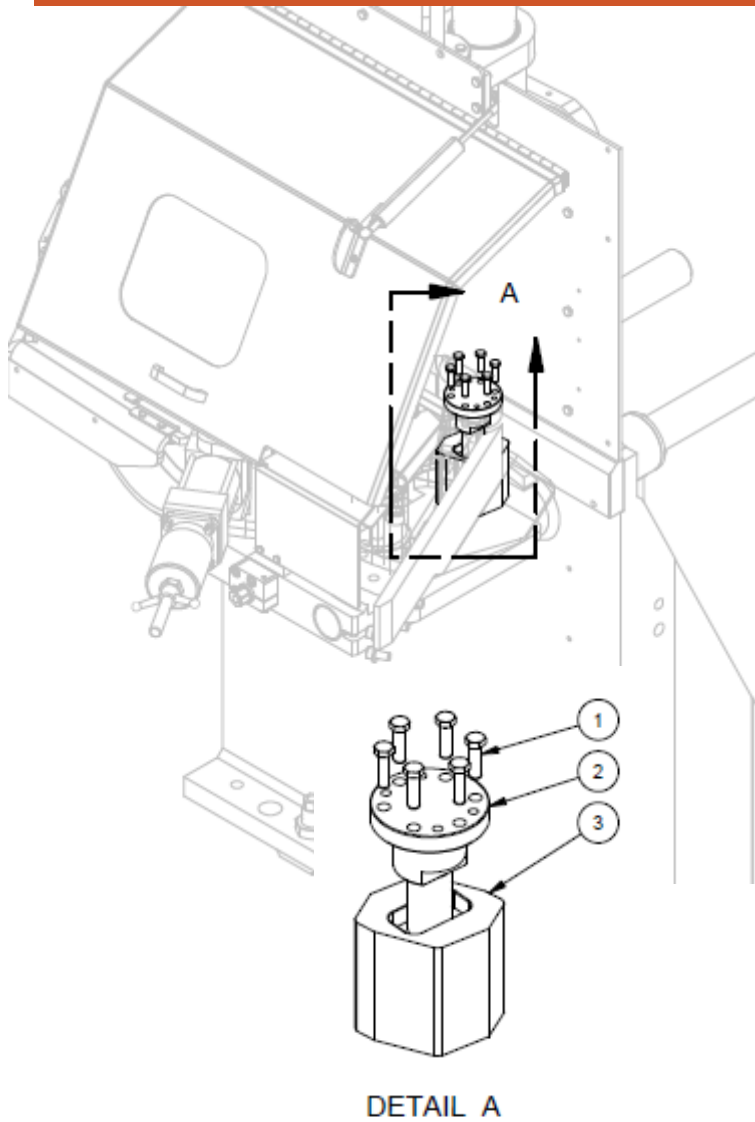


HEAVY-DUTY FEED TABLE AND BRIDGE

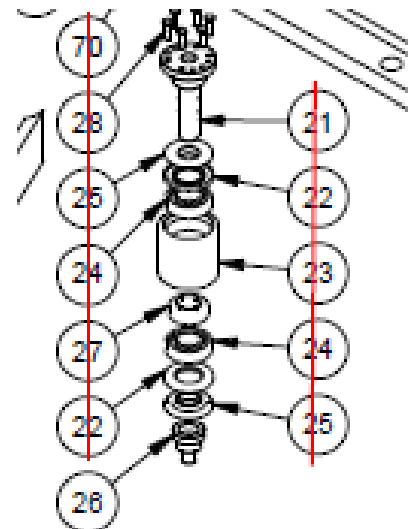


- Heavy-Duty feed table for high efficiency feeding;
- Three-foot bridge motorized with the planer;
- Bring planer 3 ft. to lumber line;
- Compact layout requires less space;
- It ensures a constant feed to the planer;
- It maintains the boards firmly against the guide bar.

ENTRY POWER BRIDGE MODIFICATION



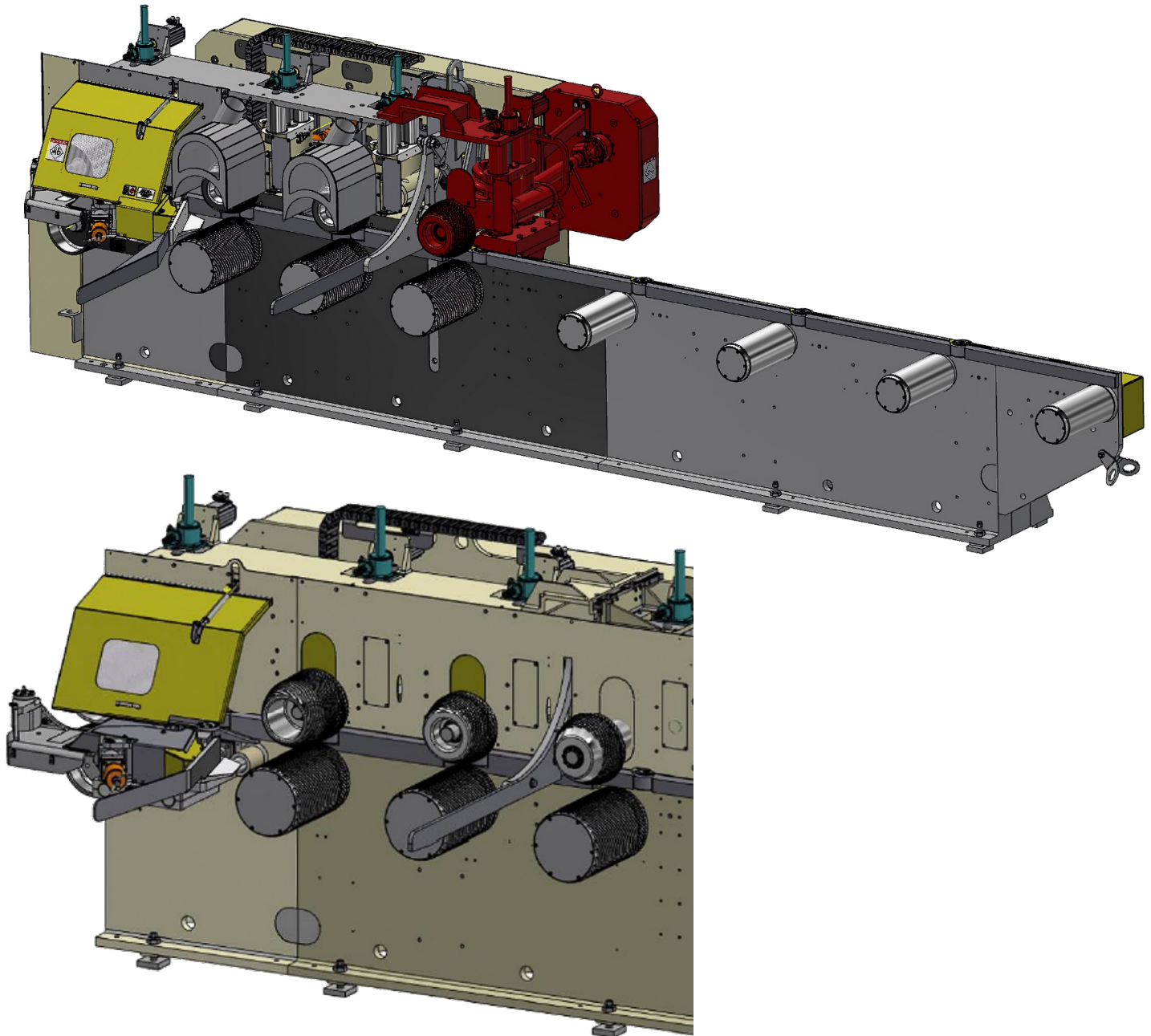
NEW DESIGN



OLD DESIGN

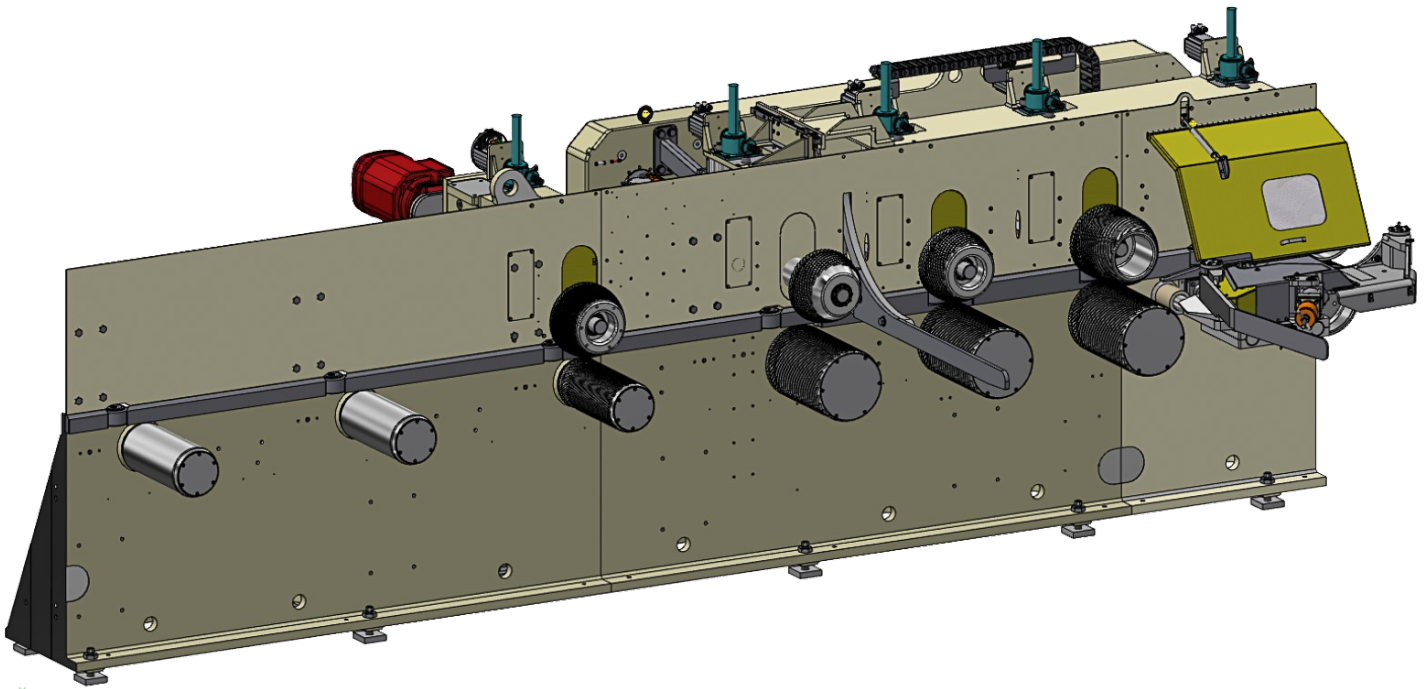
- New Corner Guide design;
- Helps feed narrow wood;
- Less mechanical parts;
- Increase productivity;

THIRD PINEAPPLE



- Third pineapple installed on feed table to improve feeding wider wood and faster piece count and reduce gap;
- This system is adjustable depending on the length and width and provides piece count improvement.

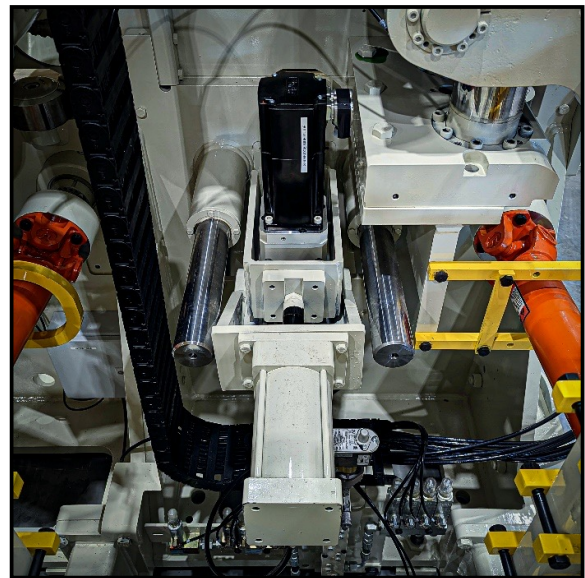
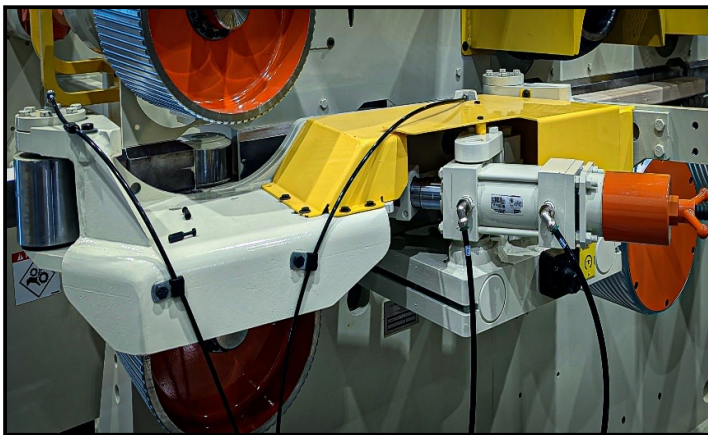
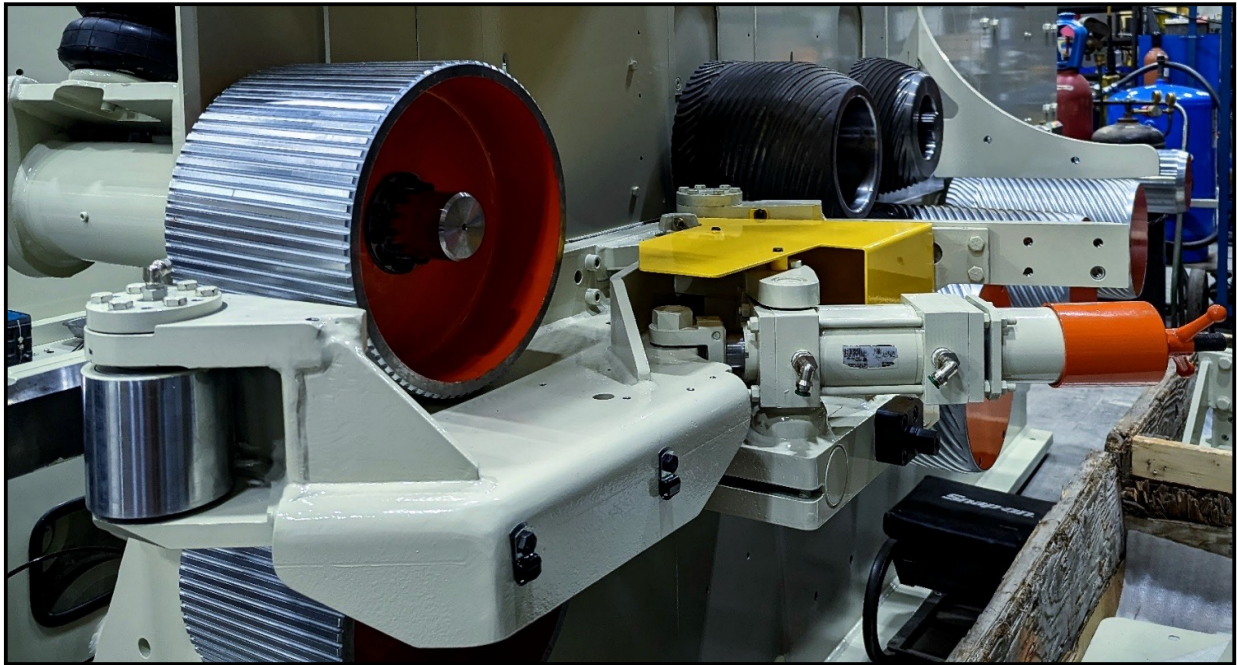
FOURTH PINEAPPLE



- Driven by a separate motor than the third pineapple;
- Conceived to hit worldwide feeding records; 230 lugs per minute on 2x4, 16
- Allows a faster infeed;
- Reduced gap.

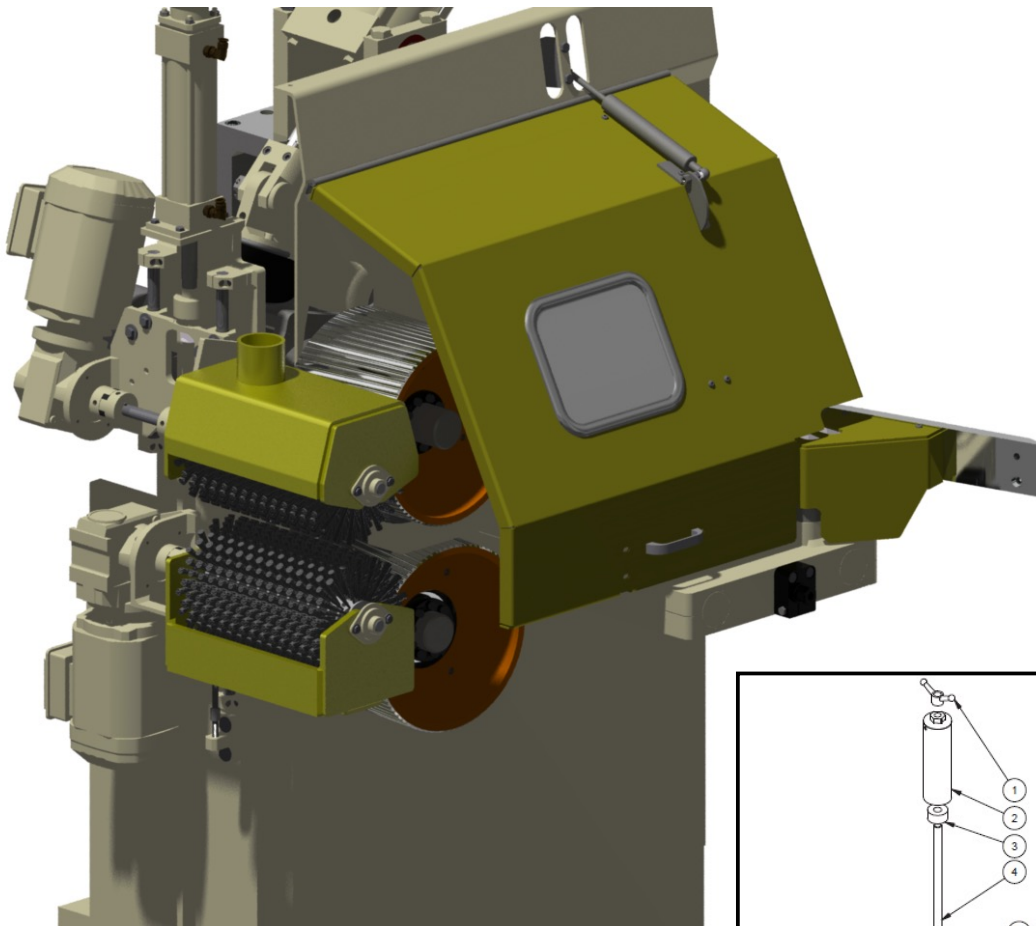


RETRACTABLE ARM FOR BRIDGE



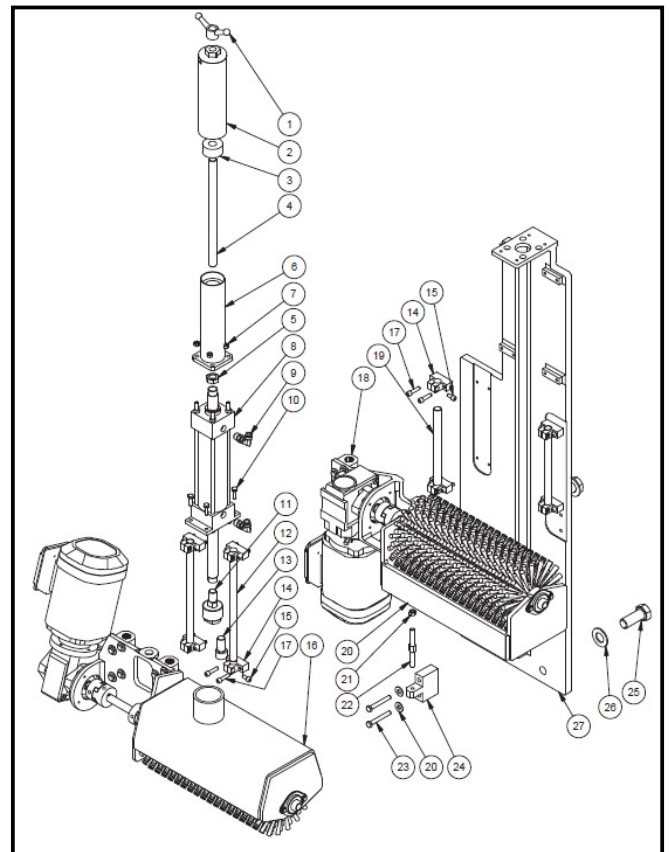
- Helps feed crooked and bowed lumber
- Less jams in the planer;
- Will open up for different widths;
- Can be used on bridge to keep boards against the guide bar;
- Can open up when boards are wider than the required product (ex: 2x12, 12.25 product coming);
- Can be installed with servo for auto width adjustment;

CLEAN-UP BRUSH



The clean-up brushes can be installed:

- On the bridge to clean sand off wood before it enters the planer;
- Before the optimizer to ensure the cleanliness of the wood.



PINEAPPLES



Chrome Finish

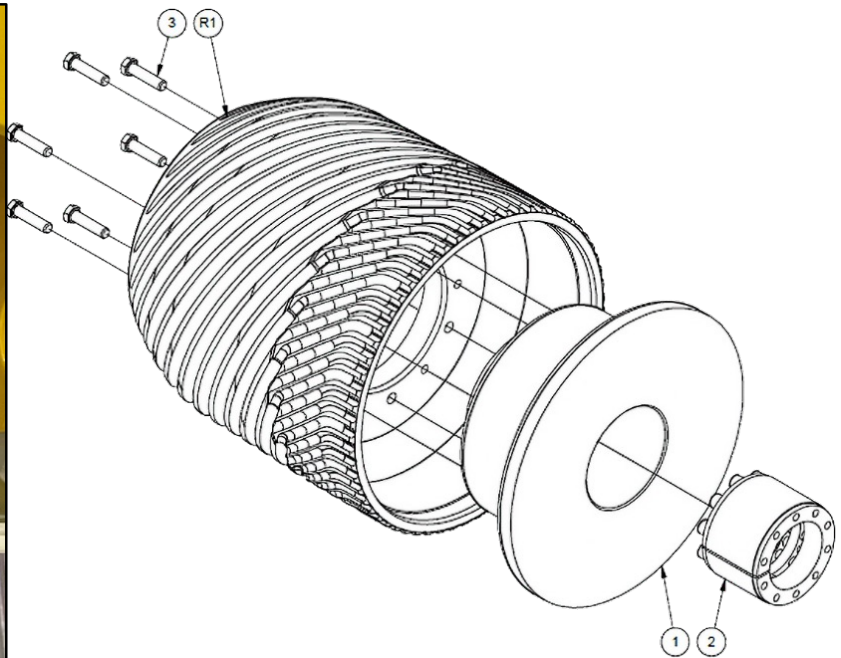


Tungsten Finish

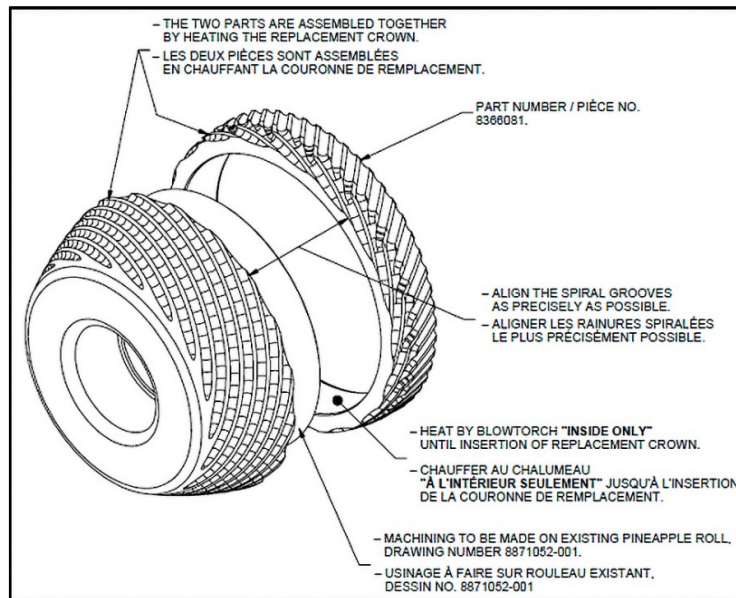
- Many different designs for different products;
- Chrome and tungsten coating available.

PINEAPPLES

Boltable (Quick change) Pineapple



Replacable crown



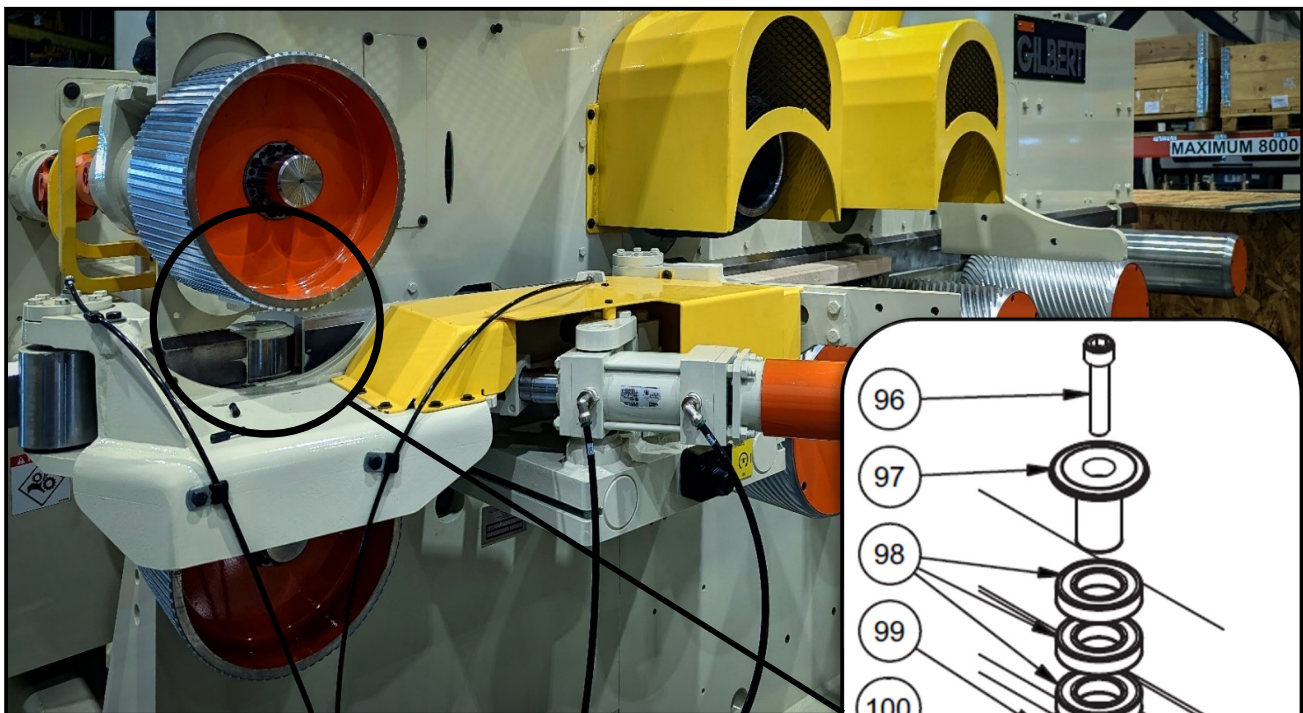
- Leave hub on table, change from 4" to a 6" in about 10 minutes
- Increases the up time and production;
- Not as heavy as regular model

ROLLS

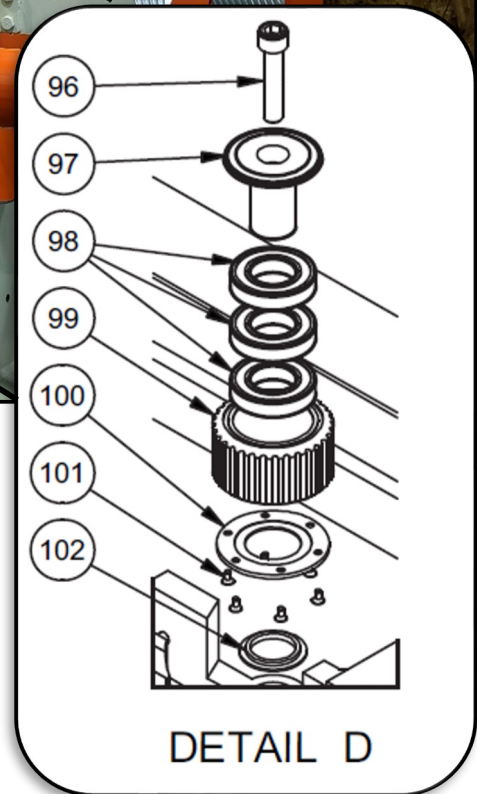
Aggressive Bed Rolls Below Pineapple Rolls



- Replaceable crowns available, same as Pineapples;



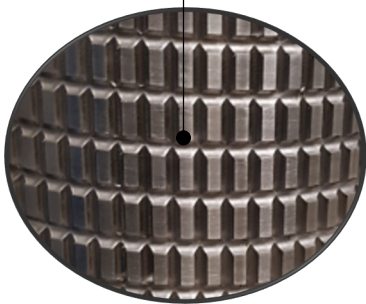
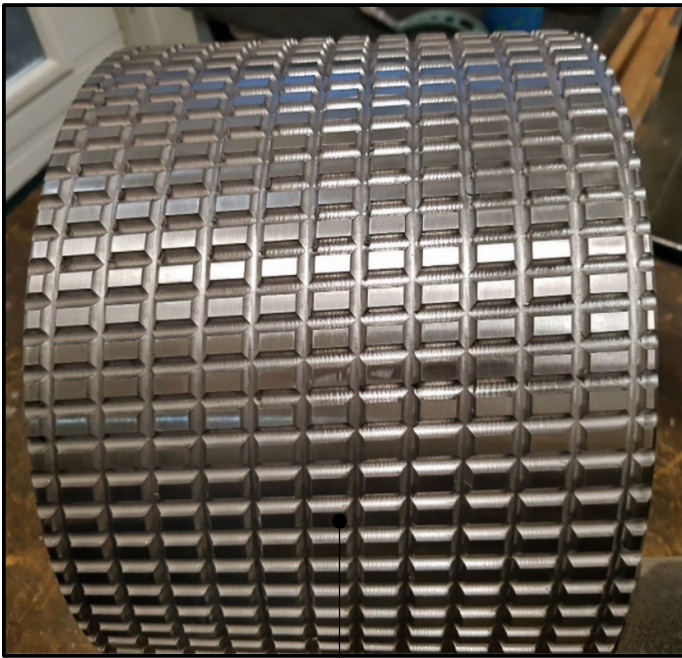
- New grooved rollers on Feed Table
- Helps boards to stay against the guide bar



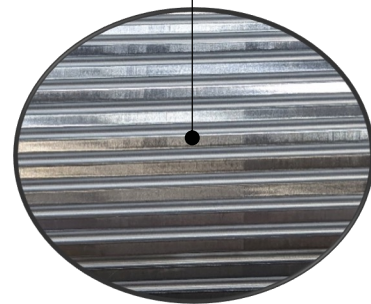
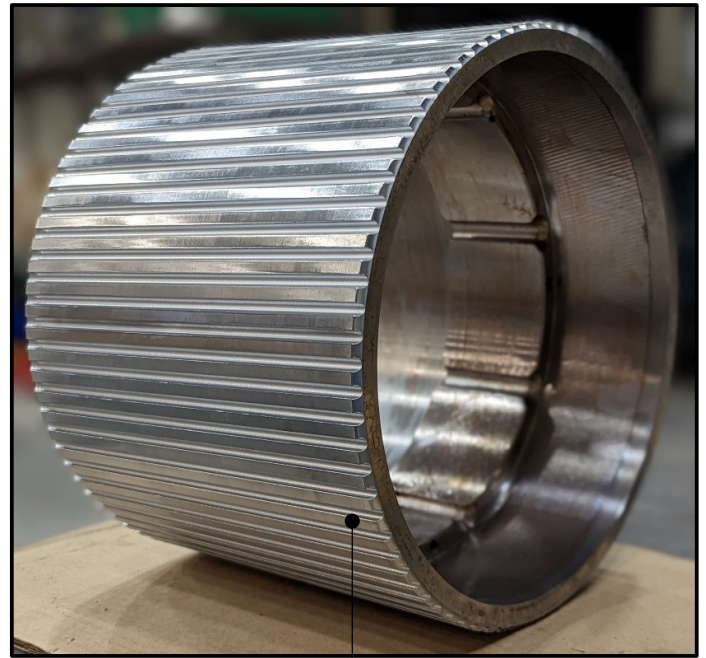
GILBERT PLANER INFEED ROLLS

Aggressive Infeed Rolls

Knurled Finish



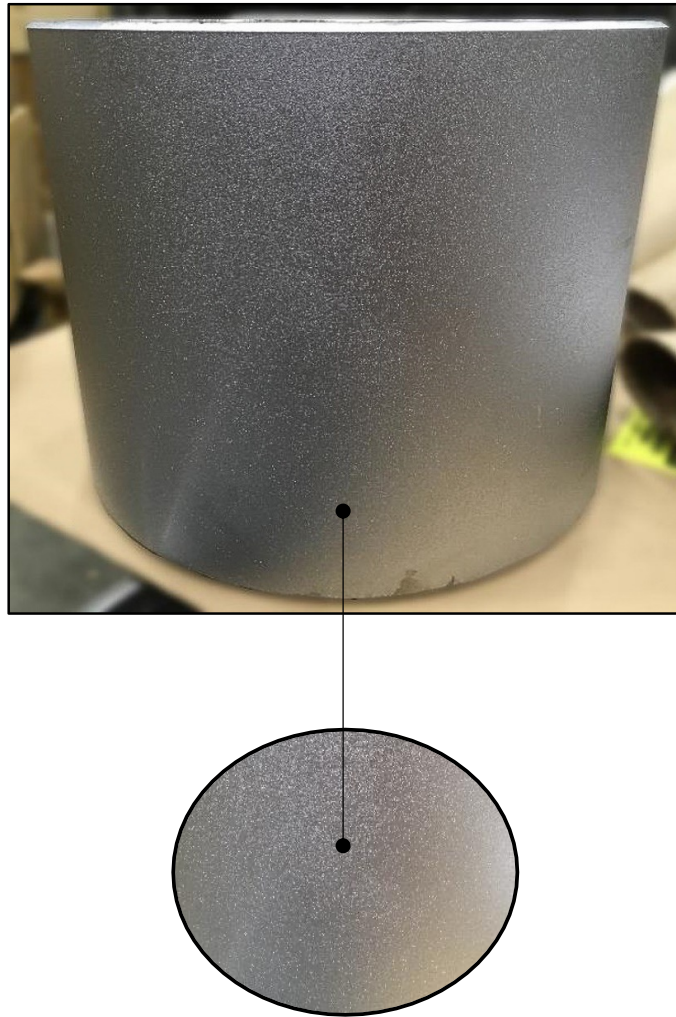
Grooved Finish



- Works well on wood with ice;
- Better traction on infeed;
- Increased uptime & productivity;
- Easy change at little cost to help improve feeding

GILBERT PLANER CENTER AND OUTFEED ROLLS

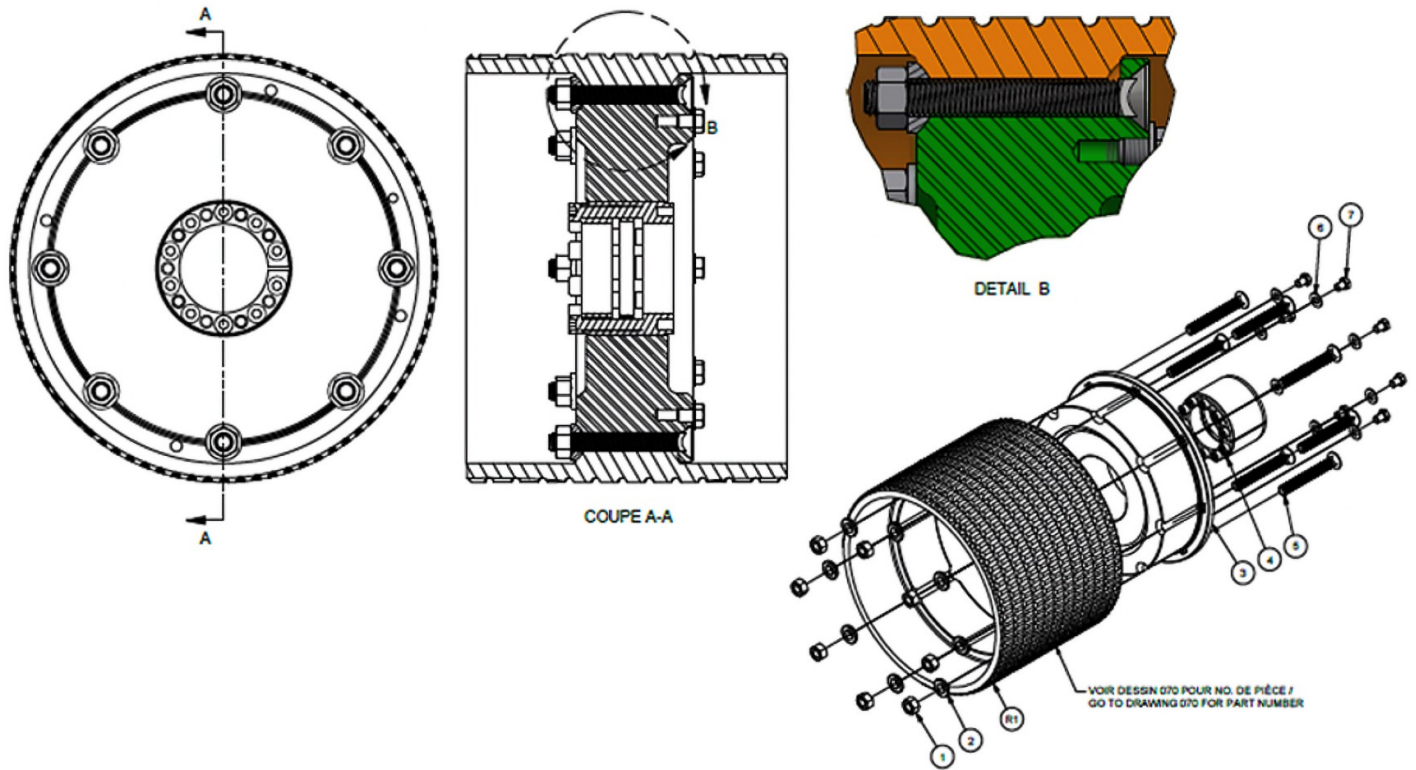
Sand Blasted Finish



- Better traction on center and exit rolls;
- Helps pull the boards out of the planer;
- Increased uptime & productivity;
- Doesn't mark or tear the wood.

ROLLS

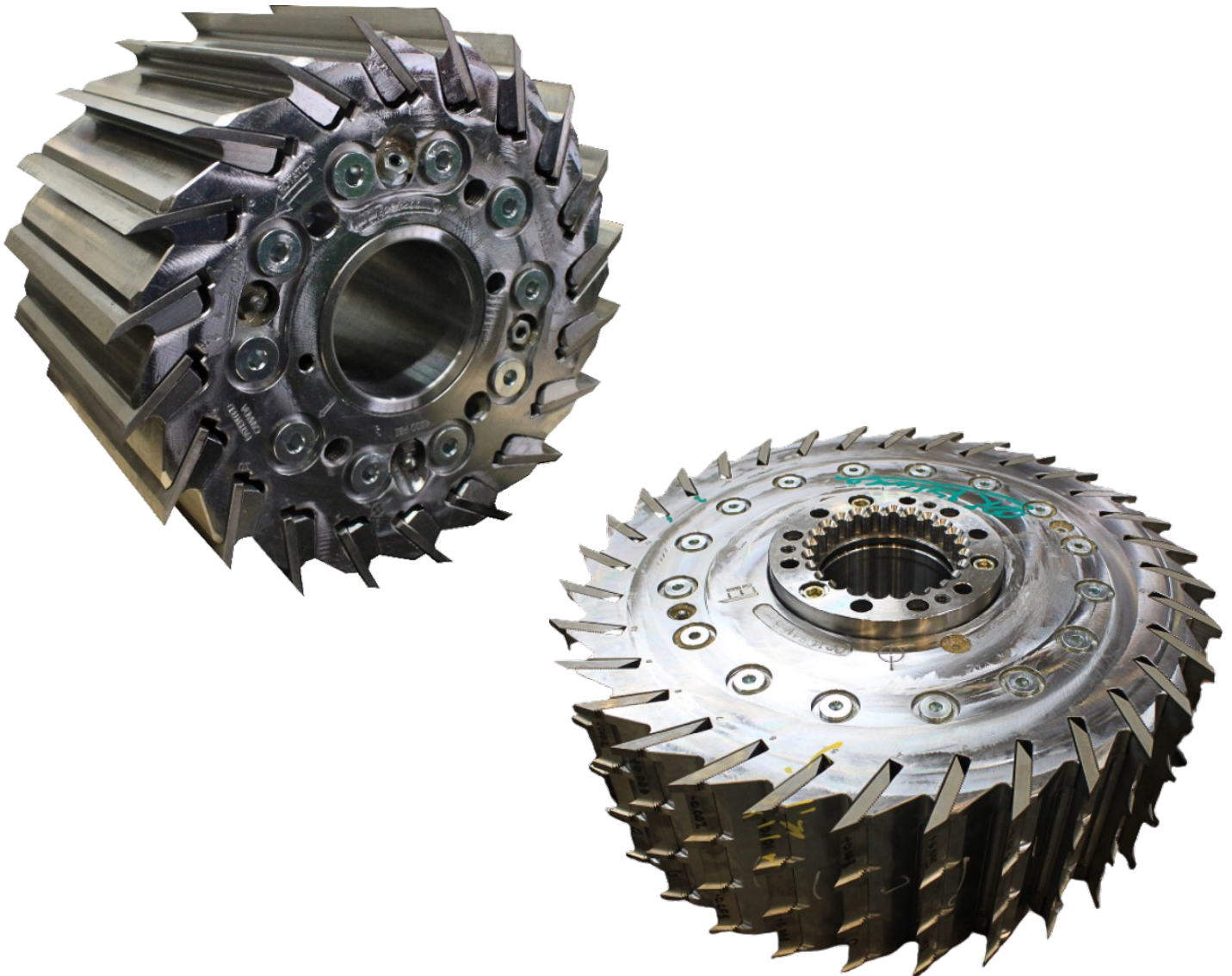
Quick Change Feed Rolls



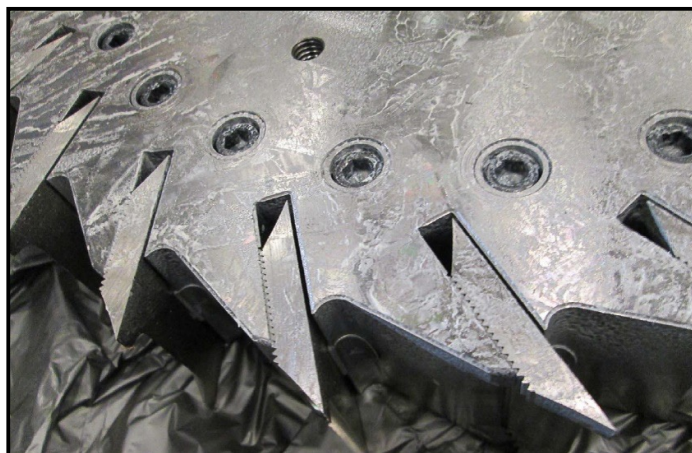
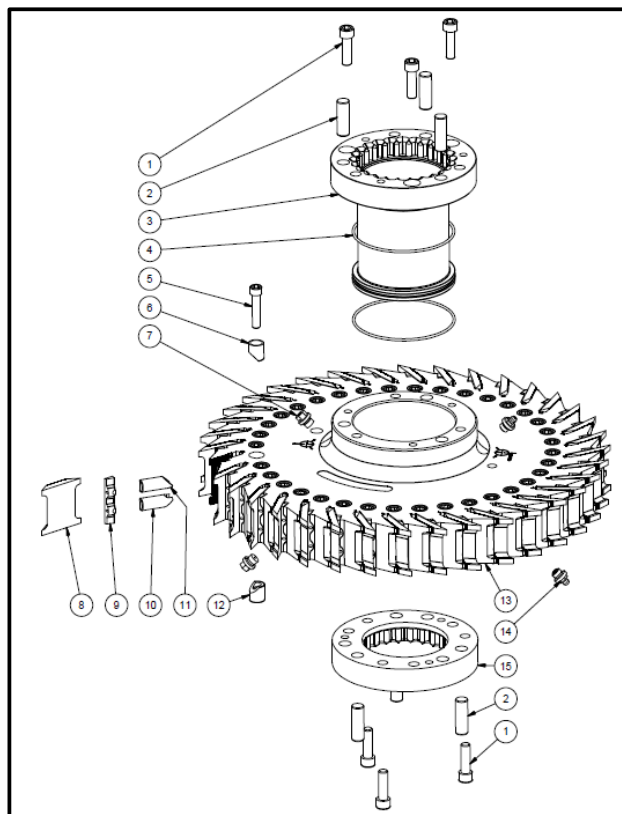
- Better traction;
- Easier and faster to change; not as heavy as regular model;
- Helps pull the boards out of the planer;
- Increased uptime & productivity;
- New roll designs can be installed.
- Leave hub in planer, just change the roll

CUTTERHEADS

- GILBERT Side Heads (P. 42)
- GILBERT Triple Pattern Side Heads (P. 43)
- Hydro-Grip Top and Bottom Heads (P. 44)
- Key Knife Cutterheads (P. 45)
- Realignment Jig for Top and Bottom Heads (P. 46-47)
- Top and Bottom Head Handling Tool (P. 48)

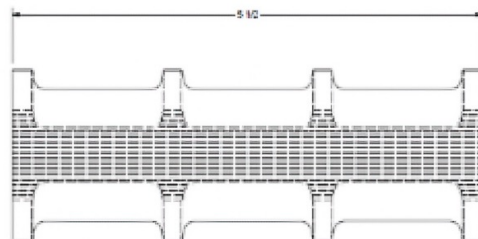
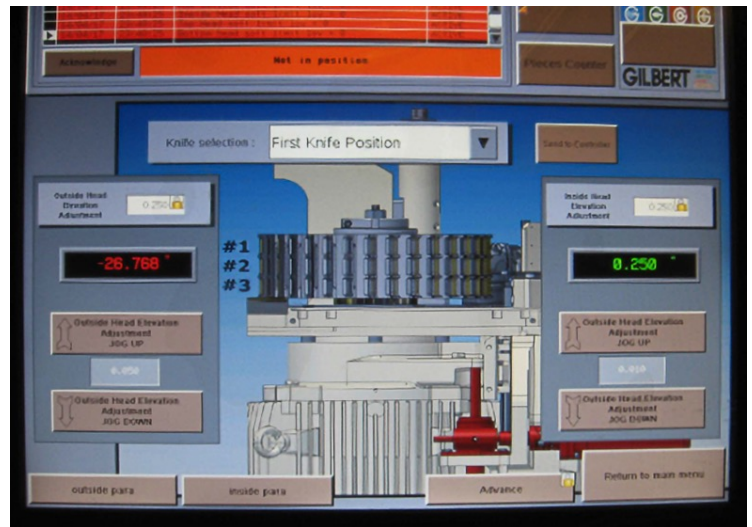
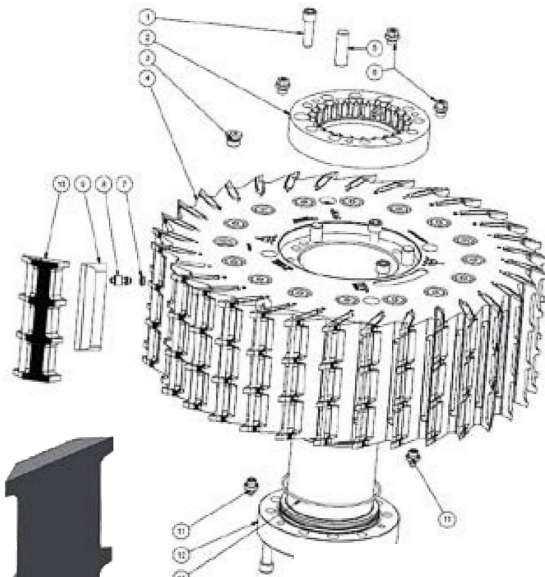


GILBERT SIDE HEADS



- More knives in same cutting circle;
- Reduce jointing after installing the cutterhead;
- Increase the quality of the finished wood;
- Reversible knives;
- Less expensive than LV knives.

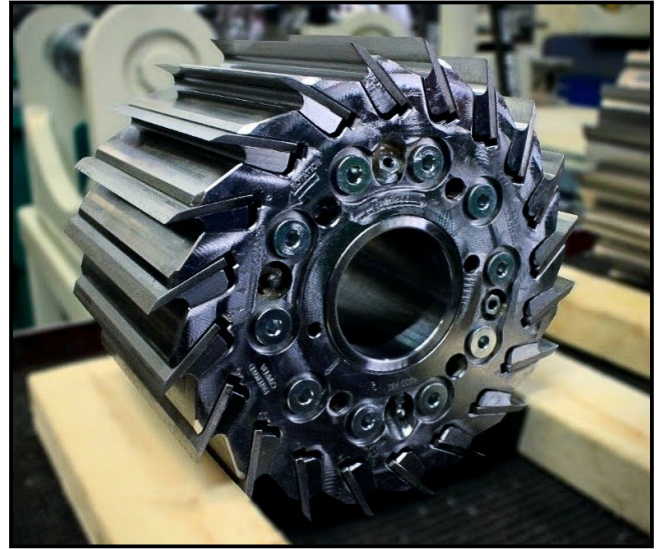
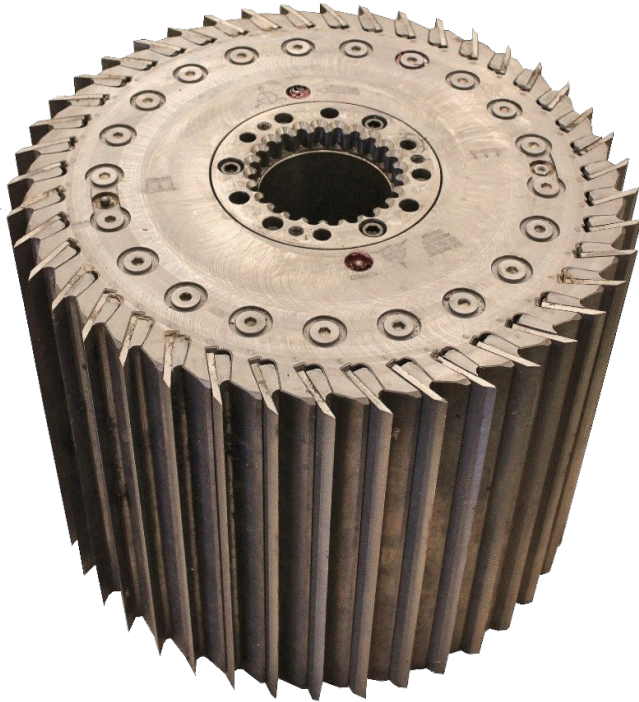
HYDRO-GRIP TRIPLE PATTERN SIDE HEADS



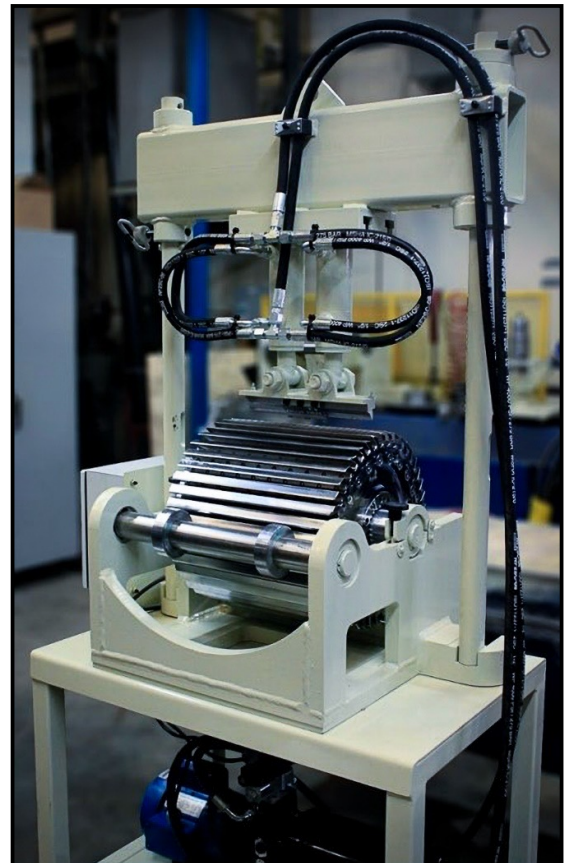
- 6 inch side head knives;
- The knife can have 3 or more patterns;
- Heads stay in the planer 3 times longer;
- Joint knives once all three patterns are worn;
- Knives are reversible & grindable.

**Must have side head linear rails already installed

HYDRO-GRIP TOP AND BOTTOM HEADS

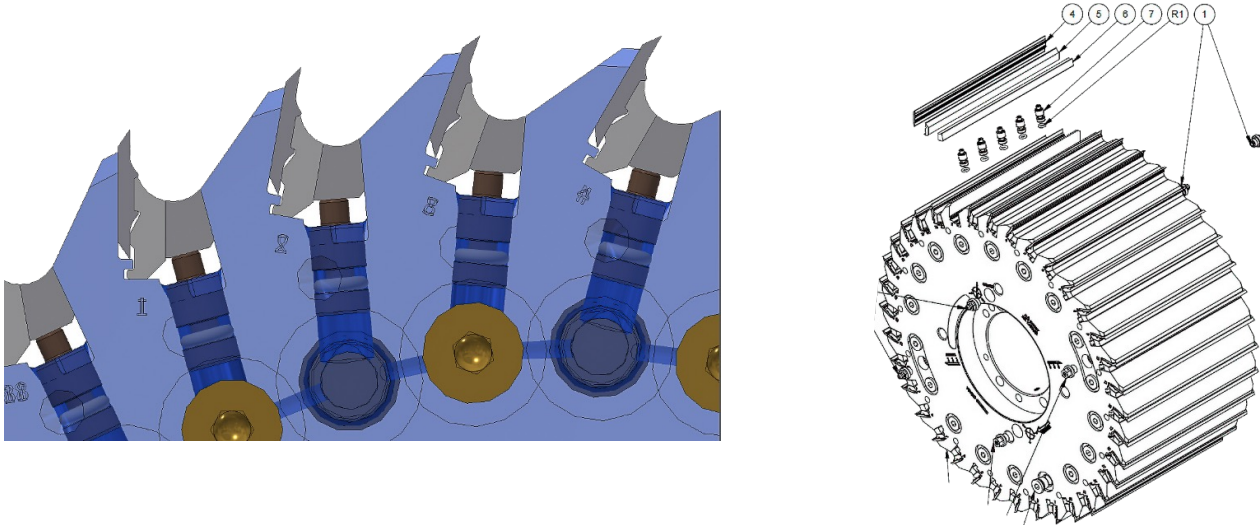


- All knives are mounted with a hydro-grip system;
- Time saved because there are no bolts to install;
- Reduce jointing after installing the cutterhead;
- Increase the quality of the finished wood;
- Flat or corrugated knives;
- More knives in same cutting circle;
- Easy to change knives.
- Different widths for different products ;
4" , 6" , 8" , 10" , 12"

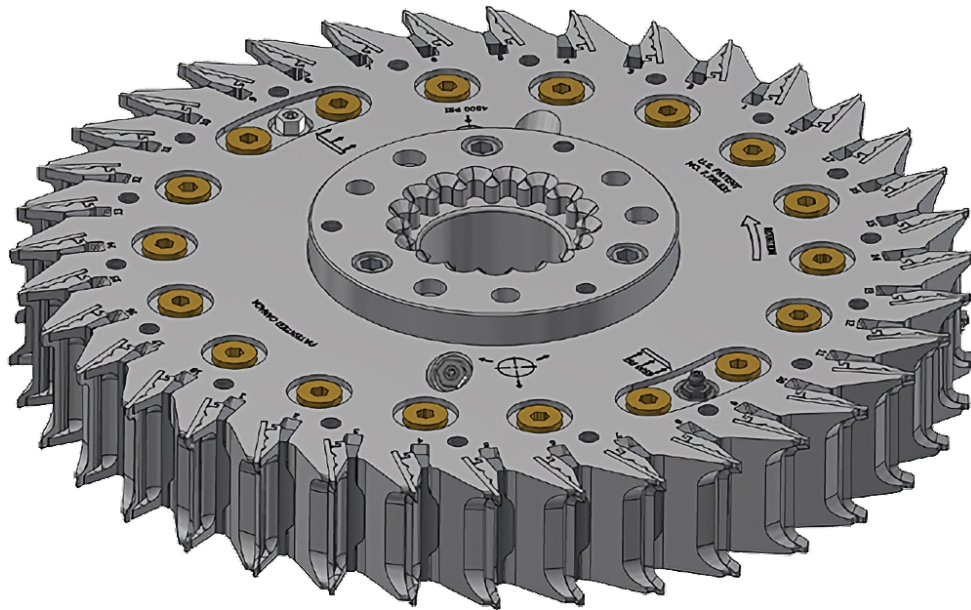


KEY KNIFE CUTTERHEADS

Hydro-Grip Top and Bottom Heads with Key Knives



Hydro-Grip Side Heads with Key Knives



- Safer
- All knives are mounted with a hydro-grip system;
- Time saved because there are no bolts to install;
- Long lasting on planer without changing;
- No grinder required.

KNIFE REALIGNMENT JIG FOR TOP & BOTTOM HEADS

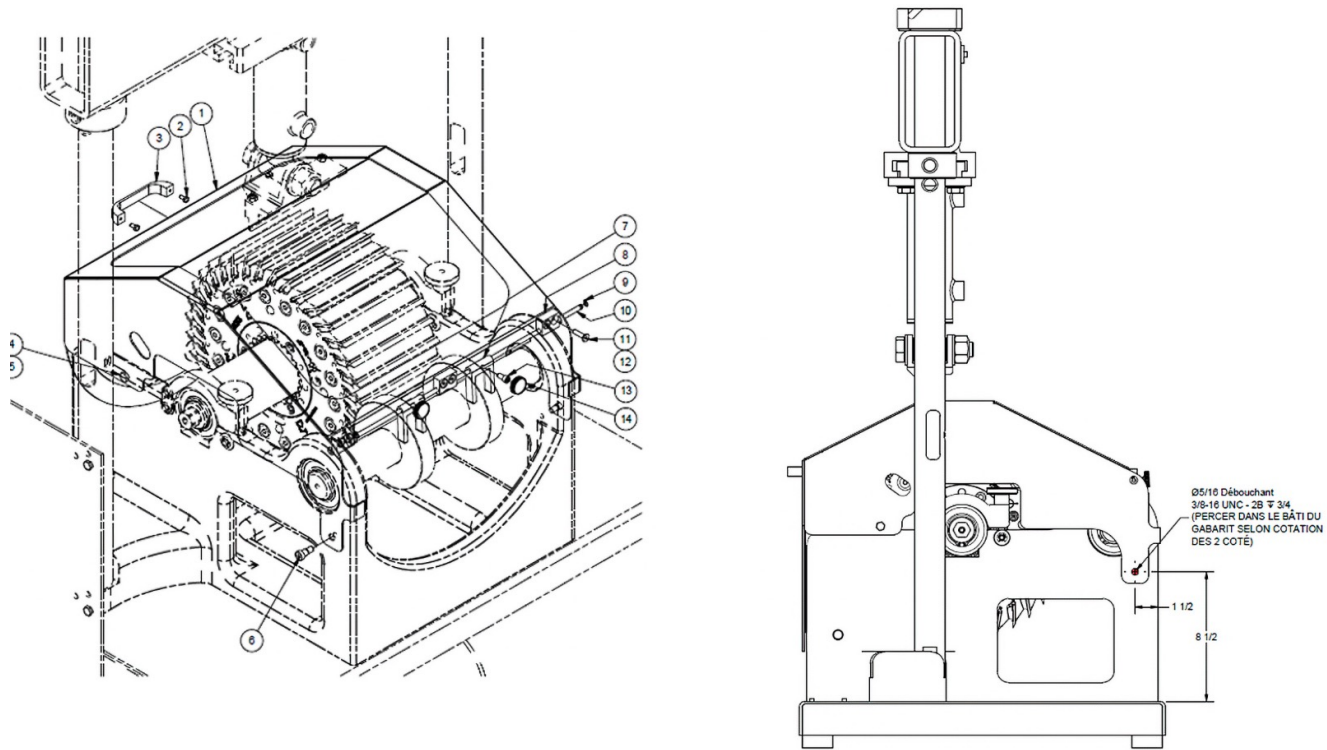


- Jig to set knives in top and bottom cutterheads;
- Better traction to insert knives;
- Better cutting circle;
- No use of the hammer, Safer;
- Faster.

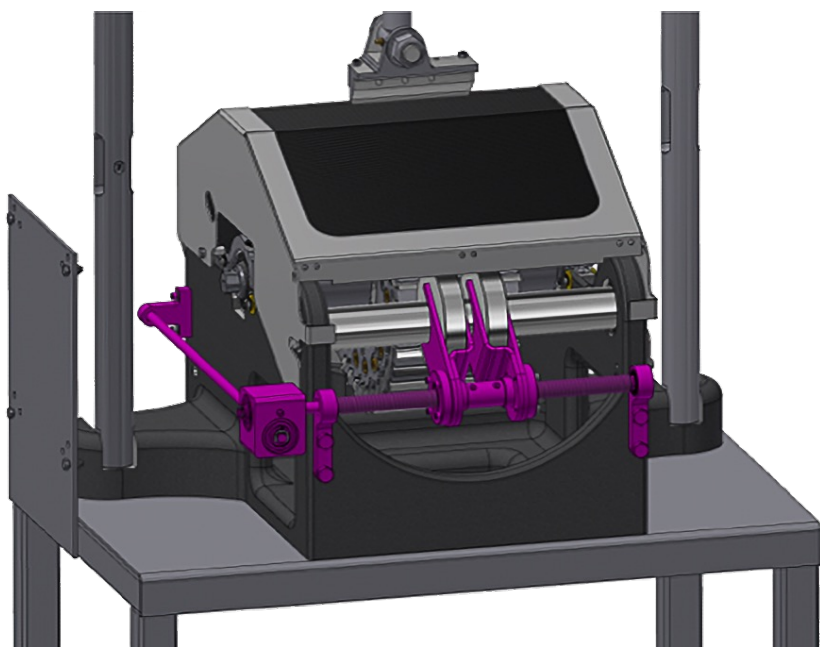


KNIFE REALIGNMENT JIG FOR TOP & BOTTOM HEADS

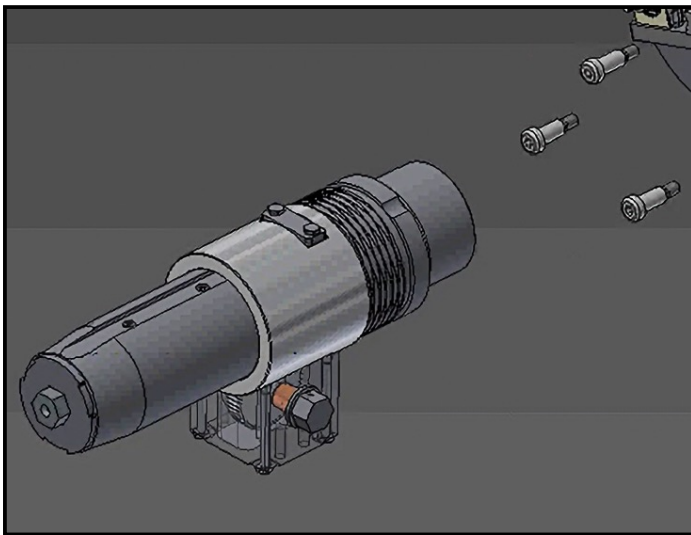
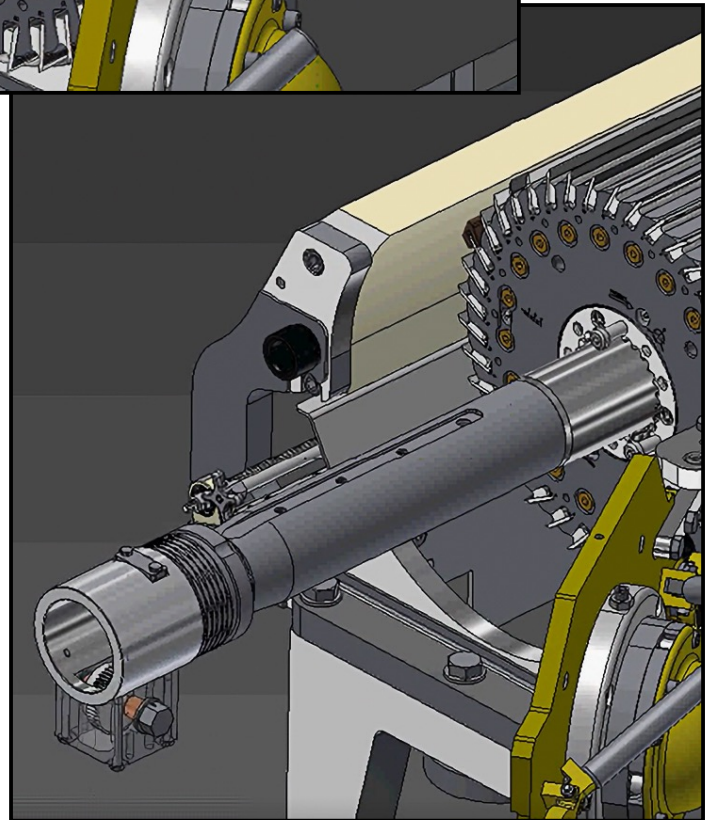
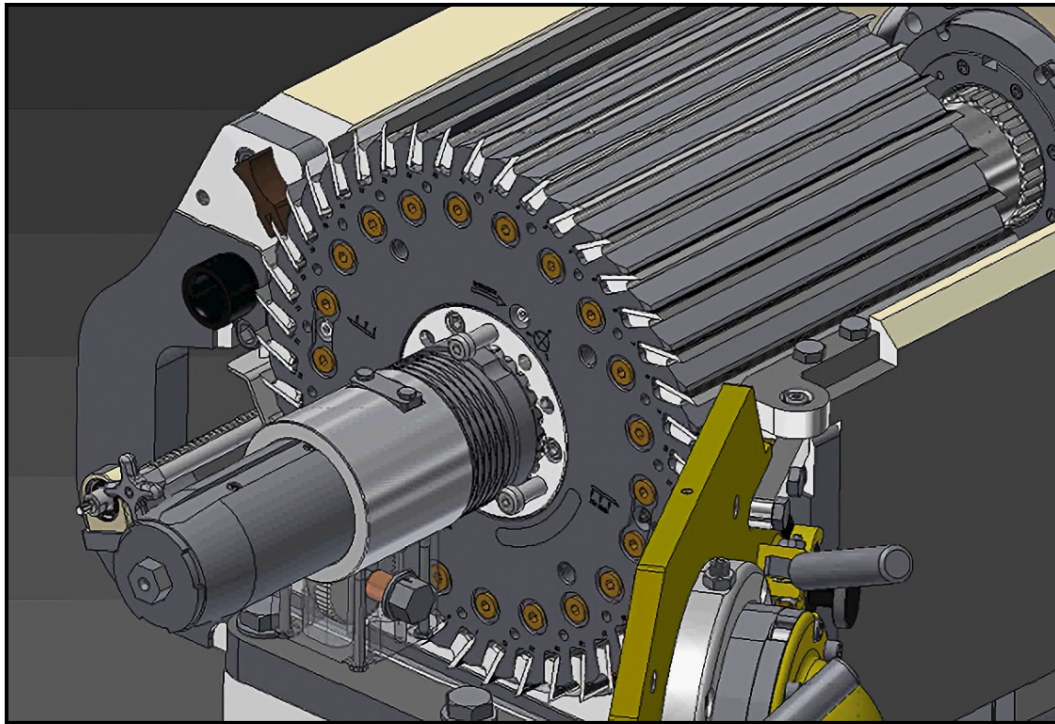
Protective Guards



Wheel Adjustment Kit



TOP & BOTTOM HEAD HANDLING TOOL

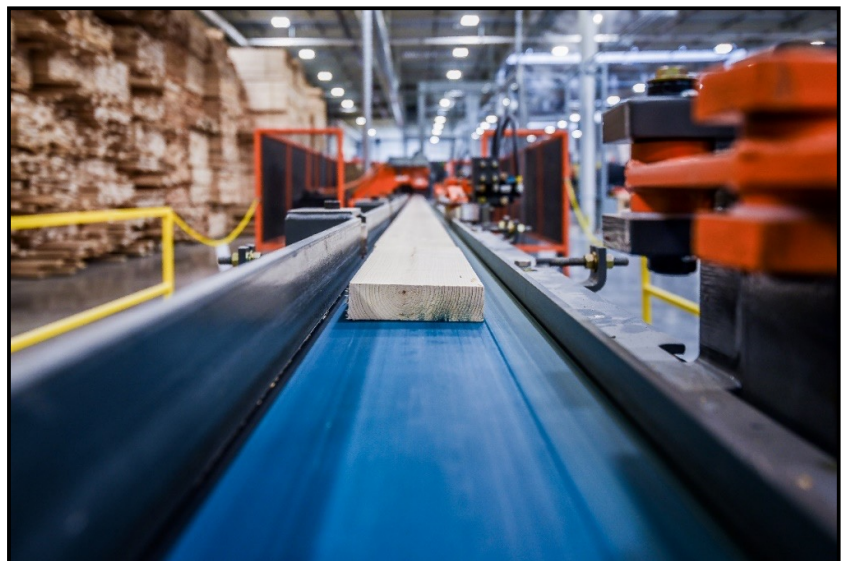
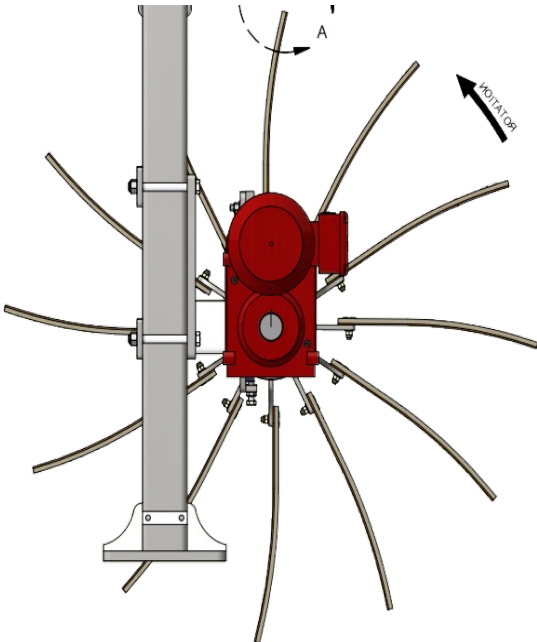


- Safer for operator;
- Improved tool to remove heavy and wide top and bottom heads from the planer;
- Easier to pull out and push back head;
- Ratchet included.



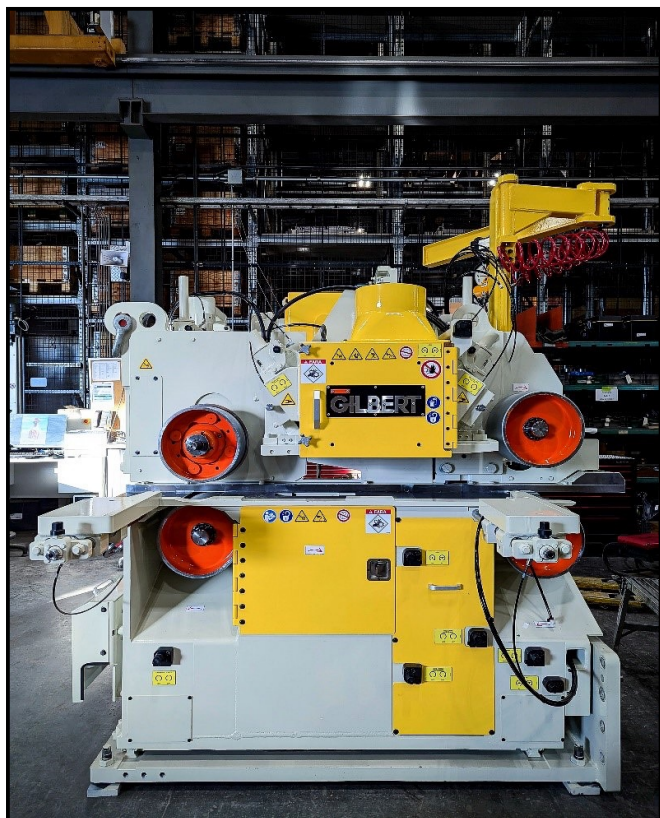
OUTFEED LINE

- Profile / Splitting Module (P. 50)
- Slowdown Belt (P. 51)
- Slowdown Brush (P. 52)
- Outfeed Belt (P. 53)
- Outfeed Bridge (P. 54)



PROFILE / SPLITTING MODULE

CAN BE RETROFITTED TO EXISTING PLANERS



Time to split, time to profit

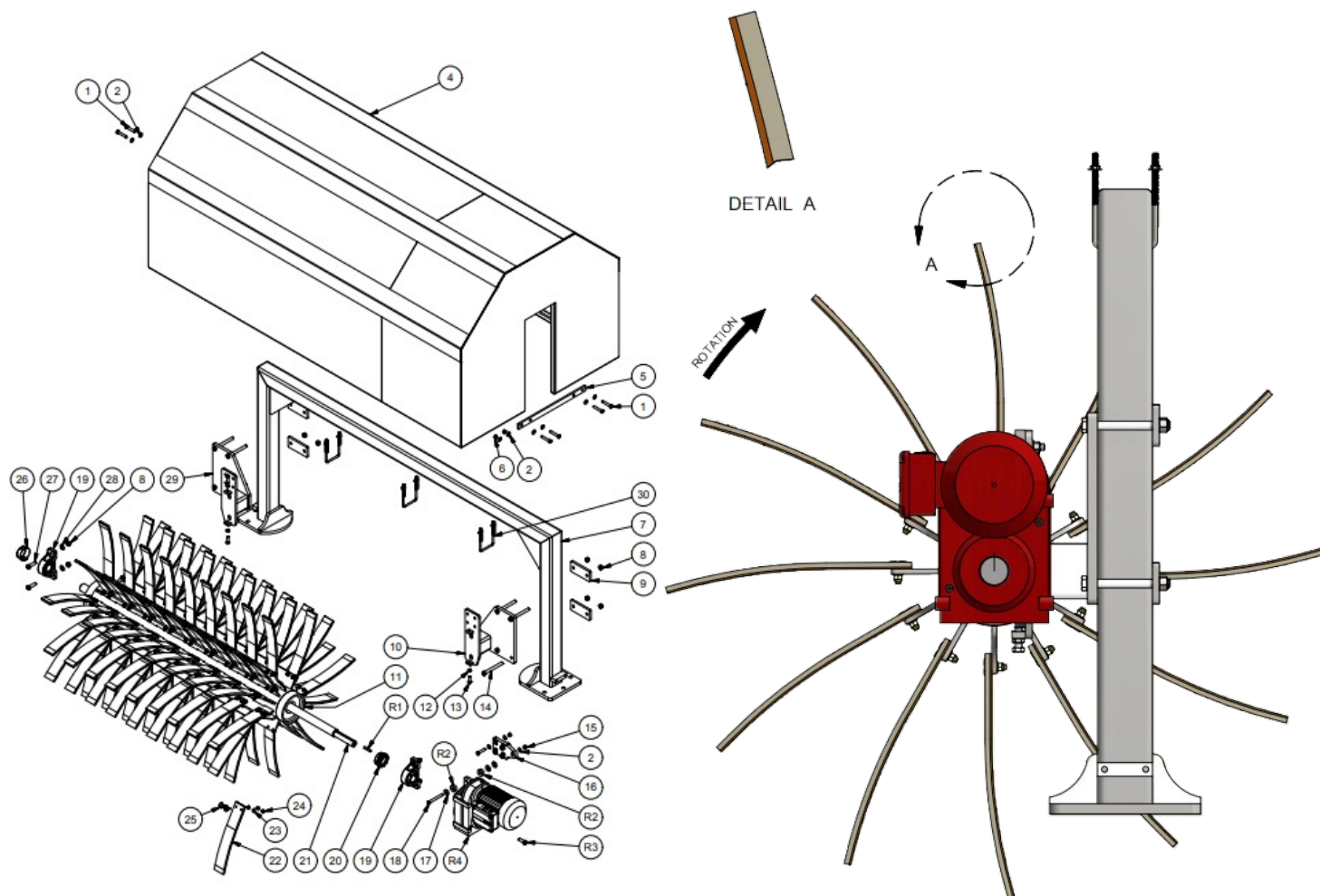
- The module can be attached to a planer or on an independent production line.
- Module to make special profiles or to split lumber in two or three pieces;
- Feed speeds up to 2400 ft/min (725 m/min);
- It operates with the same Hydro-Grip system as used on Gilbert planers;
- Any type of splitting or profiling tools can be installed;
- Can be retro fitted to existing planers.

SLOWDOWN BELT



- Designed to decelerate boards from high speed GILBERT planers;
- Gently slows pieces down without damaging the wood;
- Changes position according to production
- Aggressive belts leaves no mark on the wood

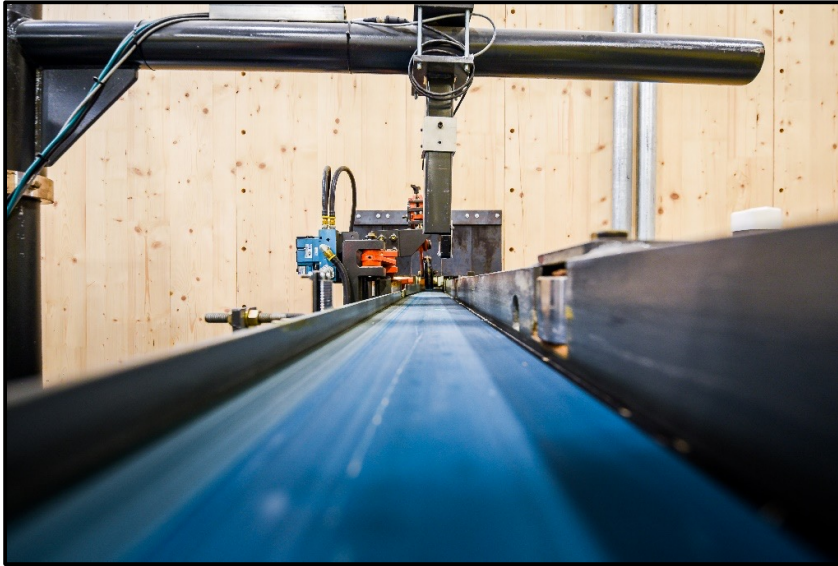
SLOWDOWN BRUSH



Can be installed on other brands of slowdown belts

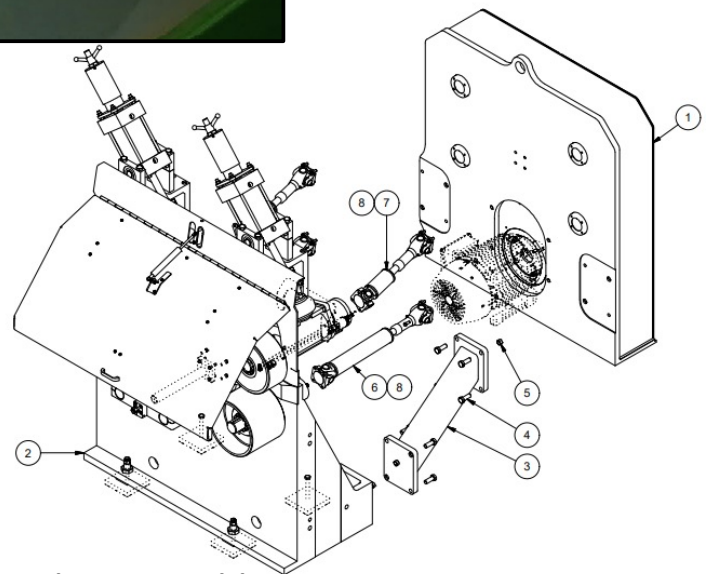
- Gently slows down the boards without damaging them;
- Motorization of 5 HP;

OUTFEED BELT



- Crowned and balanced tails and tensioning pulley
- Crowned, lagged and balanced drive pulley
- Guarding on both sides all along conveyor
- Safety guarding

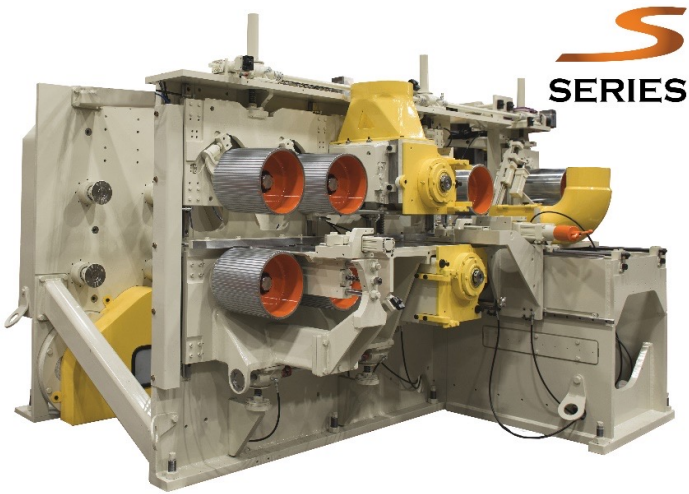
OUTFEED BRIDGE



- Helps wood to transition between the planer and linear optimizer
- Same design as Gilbert Infeed bridge;
- Sturdy steel frame, stress relief for optimal resistance;
- Two to three top feed rolls per module
- Two to three bottom rolls the same size as top rolls;
- Heavy Duty variable angle main guide;
- One 30 HP motor to drive all rolls;
- Option for automatic width and automatic height adjustments;

GILBERT'S LINE OF PLANERS

GILBERT S-SERIES PLANER



GILBERT 6 ROLL PLANER



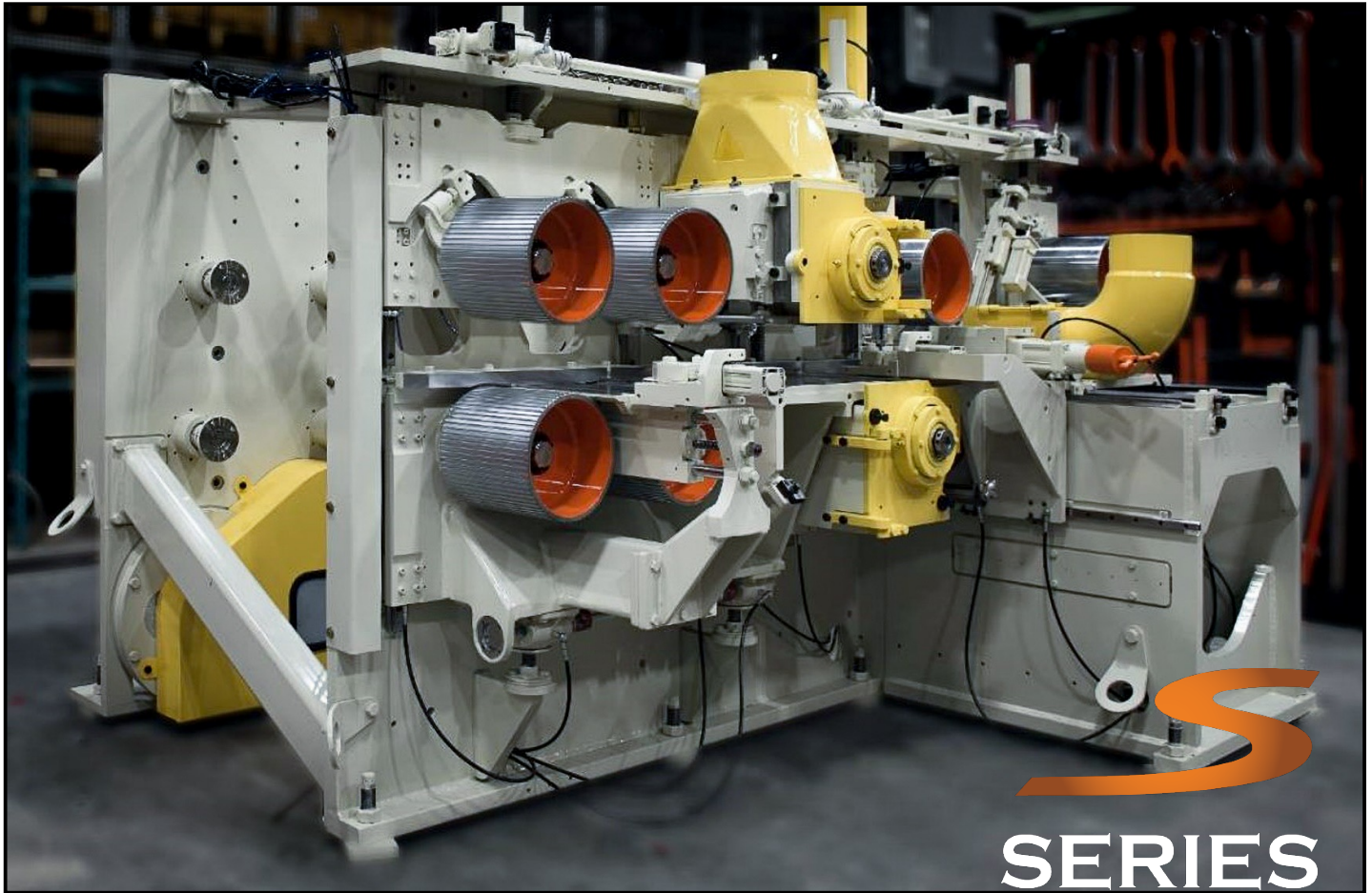
GILBERT HIGH SPEED PLANER



GILBERT MOULDER PLANER



GILBERT S-SERIES PLANER



- Smaller design for slower speeds and diversified value-added wood products like moulding, remanufacturing, finger jointing, cedar, pine and rip saw operations;
- Feed speeds from 300 up to 1800 ft/min (90 up to 550 m/min);
- 11 in. (275 mm) cutting circle cutterheads - Up to 26 knives per head;
- Compact design for installation into an existing layout.

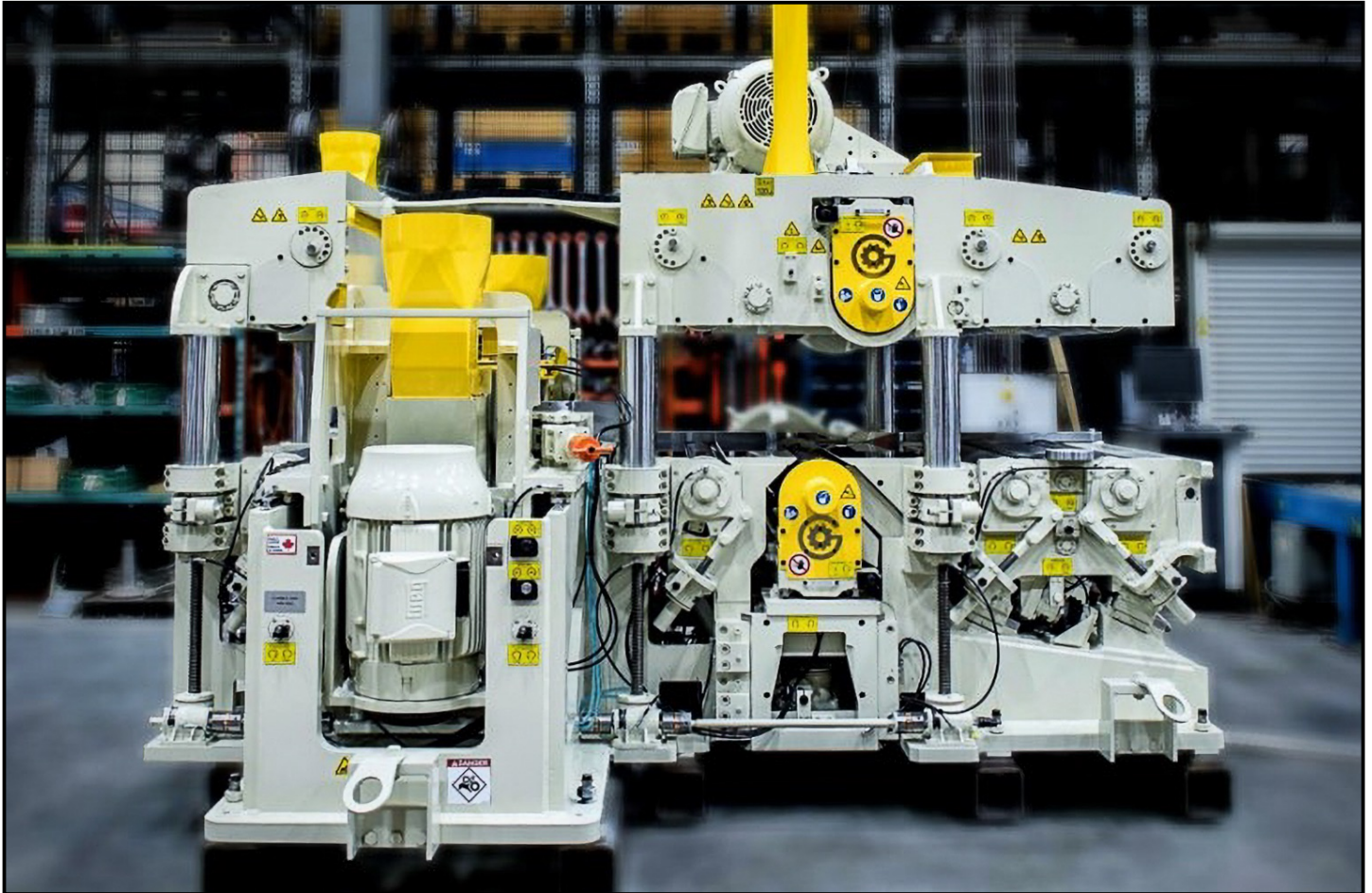


GILBERT MOULDER PLANER



- Design for all speeds and needs;
- Extra cutterhead modules can be added to make all profiles and patterns;
- Versatile and heavy-duty machine for high quality results.

GILBERT TIMBER POWER PLANER



GILBERT'S NEW GLULAM PLANER

- Built for big timbers: Glulam, CLT, log cabin beams and more;
- Timber up to 16 in. high by 36 in. wide;
- Heavy duty frame.

WEAR PARTS

Did you know you could send all your Gilbert Planer wear parts to our USA factory for our special extra tough, long-lasting recoating?

Bedplates, Guide Bars, Chip Breakers and more!

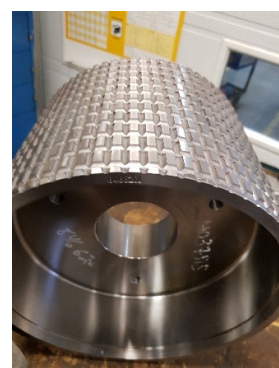
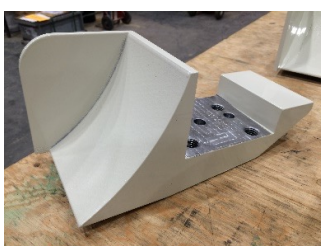
Make sure you have a spare on the shelf of each part to install on your machine, while sending the worn one to our factory.

Please contact Gilbert to order new spares parts@gilbert-tech.com or 1-418-275-5041 #2283. There are new part numbers for each wear plate with this new coating. These new parts numbers, are not always the original numbers in your Parts Manual!

Our USA factory – rapid, efficient, and NO custom paperwork for you!

GILBERT USA FACTORY INCLUDES :

A robotic cell system to make ALL wear parts. It uses the longest lasting coating on the market. It is used to put wear coating on planer parts such as bedplates, guide bars, chipbreakers. We are also looking for new coating and spare part opportunities! Not only for planer parts, **but for all your sawmill equipment. Contact us for questions!**



UPGRADE PARTS FOR YOUR GILBERT PLANER

FOR MORE INFORMATION, FEEL FREE TO CONTACT US.

Heidi Danbrook
Sales Manager

Office: 418.275.5041 #2231

Mobile: 418.630.4979

Heidi.Danbrook@gilbert-tech.com

Sylvain Lefebvre

Sr. Sales Engineer

Office: 418.275.5041 #2223

Mobile: 418.671.3132

Sylvain.Lefebvre@gilbert-tech.com

Jimmy Porter

Service and Parts Representative

Southeastern USA

Mobile: 850.830.1640

Jimmy.Porter@gilbert-tech.com

Larry Rabidue

Service and Parts Representative

Western Canada & USA

Mobile: 208.597.1683

Larry.Rabidue@gilbert-tech.com

Philippe Pelletier

Sales Coordinator

Office: 418.275.5041 #2341

Philippe.Pelletier@gilbert-tech.com