

Guide d'achat / Buyer's Guide

Lames de scie et dents

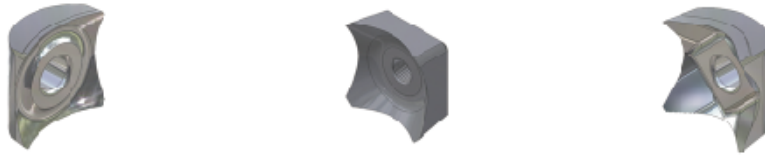
Saw blades and Teeth

1.418.275.5041

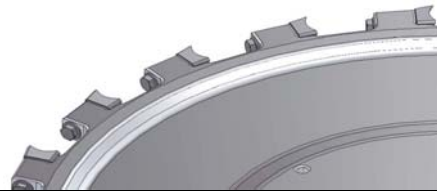
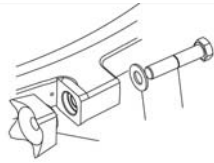
TABLE DES MATIÈRES

TABLE OF CONTENTS

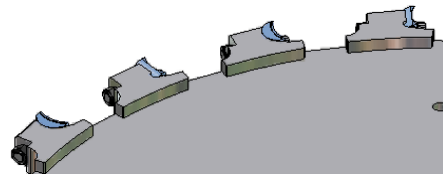
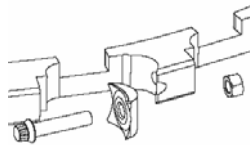
DENTS / TEETH



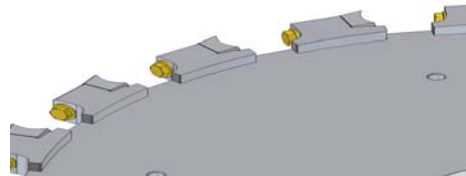
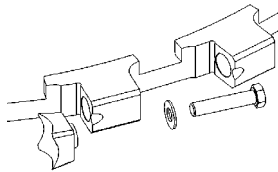
Lame de scie Hi-Cut II / Hi-Cut II Saw Blade



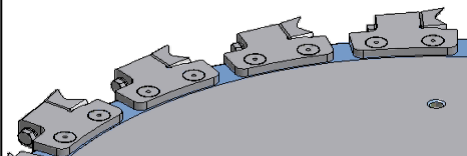
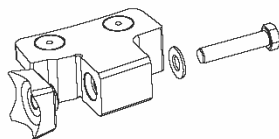
Lame de scie Série 1200C / 1200C Series Saw Blade






Lame de scie Série 1200H / 1200H Series Saw Blade



Lame de scie Série EDGE / EDGE Series Saw Blade



DENTS GILBERT GILBERT TEETH

	# Pièces/ Parts #	Dents GILBERT / Teeth	Trait de scie / Kerf	Filets / Thread	Lames de scie série / Series saw blade			
					HI-CUT II	1200C	1200H	EDGE
	7305025	Dent sphérique/Sperical tooth	2"	NIL		X		X
	7305020	Dent sphérique/Sperical tooth	2"	5/8 UNC				X
	7305046	Dent sphérique/Sperical tooth	2 1/4"	NIL				X
	7305053	Dent sphérique/Sperical tooth	2 1/4"	5/8 UNC				X
	7305050	Dent sphérique V-Cut HD/Sperical tooth	2"	NIL		X		X
	7305052	Dent sphérique V-Cut HD/Sperical tooth	2"	5/8 UNC				X
	7305051	Dent sphérique V-Cut HD/Sperical tooth	2 1/4"	NIL				X
	7305054	Dent sphérique V-Cut HD/Sperical tooth	2 1/4"	5/8 UNC				X
	7305079	Dent Hi-Cut/Tooth	2"	5/8 UNC	X		X	X
	7305069	Dent Hi-Cut/Tooth	2 1/4"	5/8 UNC	X			X

Lame de scie *Hi-Cut II*

Hi-Cut II Saw blade



Lame monopièce
 Trait de scie 2" et 2 1/4"
 One piece disc (machined disc)
 2" and 2 1/4" Kerf
 Avec 22 dents / With 22 teeth

	Montage standard 2 1/4" / Standard bolting 2 1/4"		
	#	Code	Description
	B-1	7305069	Dent Hi-Cut 2.25" / Hi-Cut Tooth 2.25"
	B-2	0910118	Rondelle Plate / Flat Washer
B-3	0614312	Boulon Hex 5/8 UNF x 3 1/4" / Hex Bolt 5/8 UNF x 3 1/4"	

	Montage standard 2" / Standard bolting 2"		
	#	Code	Description
	C-1	7305079	Dent Hi-Cut 2" / Hi-Cut Tooth 2"
	C-2	0910118	Rondelle Plate / Flat Washer
C-3	0614302	Boulon Hex 5/8 UNF x 3" / Hex Bolt 5/8 UNF x 3"	

Lame de scie Série 1200C

1200C Series saw blade



Soudée / Welded

Trait de scie 2" / 2" Kerf

Avec 22 dents / With 22 teeth

	Segments / Holders		
	#	Code	Description
	A-1		Disque / Disc

	Montage avant standard/Standard front bolting		
	#	Code	Nom
	B-1	0330038	Boulon 12 pans / 12 points bolt
	B-2	7305025	Dent sphérique / Tooth 2"
	B-3 (**)	7305050 (Non montré) (Not shown)	Dent V-Cut / Tooth 2"
B-4	0330031	Écrou / Nut HD	

(**) Composantes optionnelles / Optional components

Lame de scie Série 1200H

1200H Series saw blade



Soudée / Welded

Trait de scie 2" / 2" Kerf

Avec 22 dents / with 22 teeth

Segments / Holders		
#	Code	Description
A-1		Disque / Disc

Montage avant standard/Standard front bolting		
#	Code	Nom
B-1	0614302	Boulon Hex 5/8 UNF x 3" / Hex Bolt 5/8 UNF x 3"
B-2	7305079	Dent carrée std. / Tooth 2"
B-3 (**)	7305090 <small>(Non montré) (Not shown)</small>	Dent carrée / Tooth 2"
B-4	0910118	Rondelle plate / Flat Washer

(**) Composantes optionnelles / Optional components

Lame de scie Série *EDGE*

EDGE Series saw blade



Boulonnée / Bolted

Trait de scie 2" et 2 1/4"

2" and 2 1/4" Kerf

avec 22 or 24 dents / with 22 or 24 teeth

Segments / Holders		
#	Code	Description
A-1		Disque / Disc
A-2	0644262 0644252	Boulon / Bolt
A-3	7304164	Segment riveter dent 2 1/4" / Rivet holder teeth 2 1/4"
A-3	7304157	Segment riveter dent 2" / Rivet holder teeth 2"
A-4	7304153 7304153	Bague de fixation / Fixing ring
A-5	7304154 7304154	Bague de fixation fileter / treaded fixing ring

Montage standard 2 1/4" / Standard bolting 2 1/4"		
#	Code	Nom
B-1	0614302	Boulon Hex 5/8 UNF x 3" / Hex Bolt 5/8 UNF x 3"
B-2	7305069	Dent carrée std. / Tooth 2 1/4"
B-3 (**)	7305088 <small>(Non montré) (Not shown)</small>	Dent carrée / Tooth 2 1/4"
B-4	0910118	Rondelle plate / Flat Washer

Montage standard 2" / Standard bolting 2"		
#	Code	Nom
C-1	0614302	Boulon Hex 5/8 UNF x 3" / Hex Bolt 5/8 UNF x 3"
C-2	7305079	Dent carrée std. / Tooth 2"
C-3 (**)	7305090 <small>(Non montré) (Not shown)</small>	Dent carrée / Tooth 2"
C-4	0910118	Rondelle plate / Flat Washer

(**) Composantes optionnelles / Optional components

Lame de scie Série *EDGE*

EDGE Series saw blade



Rivetée / Riveted

Trait de scie 2" et 2 1/4"

2" and 2 1/4" Kerf

avec 22 & 24 dents / with 22 & 24 teeth

Segments / Holders		
#	Code	Description
A-1		Disque / Disc
A-2	7305155 7305165	Rivet / Rivet
A-3	7304164	Segment riveter dent 2 1/4" / Rivet holder teeth 2 1/4"
A-3	7304157	Segment riveter dent 2" / Rivet holder teeth 2"

Montage standard 2 1/4" / Standard bolting 2 1/4"		
#	Code	Nom
B-1	0614302	Boulon Hex 5/8 UNF x 3" / Hex Bolt 5/8 UNF x 3"
B-2	7305069	Dent carrée std. / Tooth 2 1/4"
B-3 (**)	7305088 (Non montré) (Not shown)	Dent carrée / Tooth 2 1/4"
B-4	0910118	Rondelle plate / Flat Washer

Montage standard 2" / Standard bolting 2"		
#	Code	Nom
C-1	0614302	Boulon Hex 5/8 UNF x 3" / Hex Bolt 5/8 UNF x 3"
C-2	7305079	Dent carrée std. / Tooth 2"
C-3 (**)	7305090 (Non montré) (Not shown)	Dent carrée / Tooth 2"
C-4	0910118	Rondelle plate / Flat Washer

(**) Composantes optionnelles / Optional components